

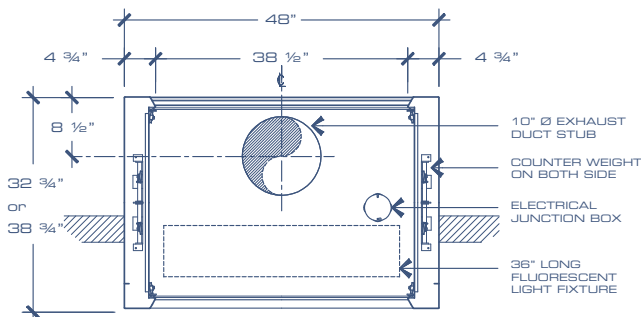
Constant Air Volume Fume Hood Pass Through / Vertical Sash

Standard Features

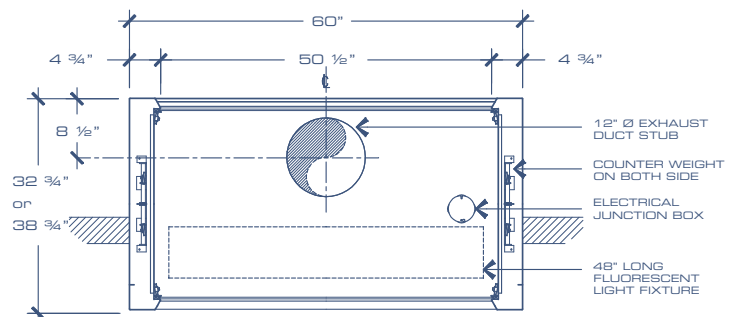
- ▶ Vertical rising sash with black PVC handle.
- ▶ Generous 27.375" interior dept with standard 32.75" O.D (33.375" ID with 38.75" OD hood).
- ▶ Tall front opening view height of 68" with standard 36" base cabinet.
- ▶ Aerodynamic T.316 Stainless steel air foil with electrical cord access on both sides.
- ▶ Fluorescent light, light switch and 2 duplex 120V - 20A with internal wiring on 1 circuit.
- ▶ Front corner posts & interior side panels pre-punched to accept up to 5 plumbing fixtures.
- ▶ Removable exterior side panel.
- ▶ Upper and lower bypasses with interior adjustable top front panel. For VAV models only.
- ▶ Cable and pulley sash system.
- ▶ Stainless steel 316 round exhaust collar.
- ▶ White polyester FRP lining $\frac{3}{16}$ " thickness.

CONSTANT AIR VOLUME CAV - PASS THROUGH - VERTICAL SASH - 32.25" OD DEEP (STANDARD DEFAULT)						
WIDTH	FRP (standard)	SS304 PANELS	SS316 PANELS	SS304 SEAMLESS	SS316 SEAMLESS	WHITE HDPE
48"	C60-48A-100	C60-48A-200	C60-48A-250	C60-48A-300	C60-48A-350	C60-48A-400
60"	C60-60A-100	C60-60A-200	C60-60A-250	C60-60A-300	C60-60A-350	C60-60A-400
72"	C60-72A-100	C60-72A-200	C60-72A-250	C60-72A-300	C60-72A-350	C60-72A-400

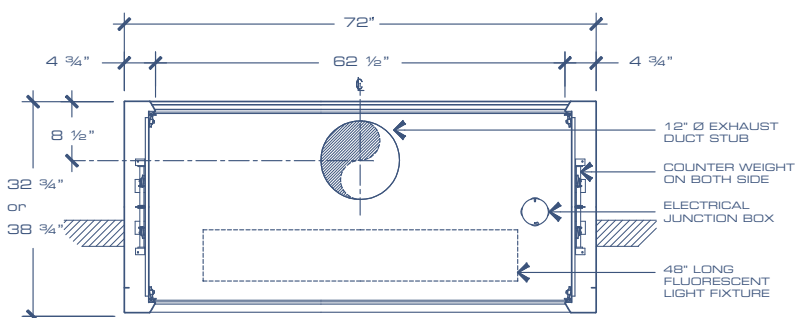
CONSTANT AIR VOLUME CAV - PASS THROUGH - VERTICAL SASH - 38.25" OD DEEP (OPTIONAL)						
WIDTH	FRP	SS304 PANELS	SS316 PANELS	SS304 SEAMLESS	SS316 SEAMLESS	WHITE HDPE
48"	C60-48B-100	C60-48B-200	C60-48B-250	C60-48B-300	C60-48B-350	C60-48B-400
60"	C60-60B-100	C60-60B-200	C60-60B-250	C60-60B-300	C60-60B-350	C60-60B-400
72"	C60-72B-100	C60-72B-200	C60-72B-250	C60-72B-300	C60-72B-350	C60-72B-400



Dimensions apply to all 48" hood



Dimensions apply to all 60" hood



Dimensions apply to all 72" hood

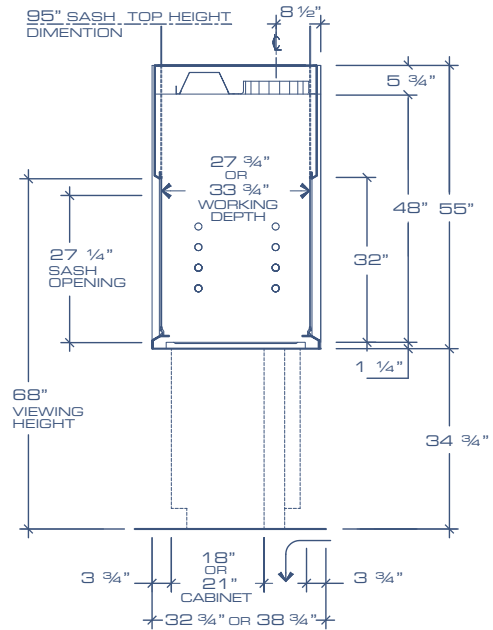
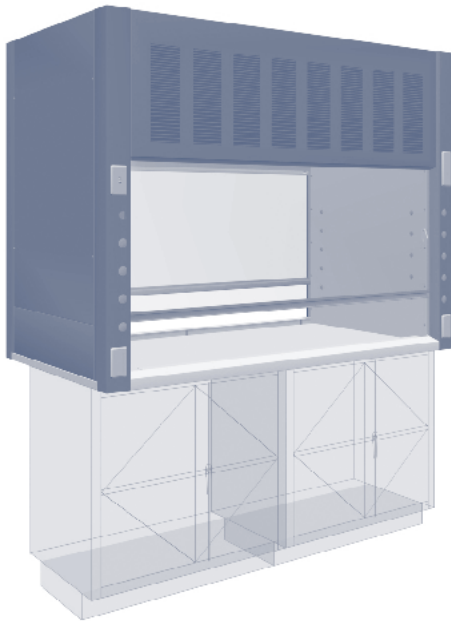


OPTIONAL SASH INTERLOCK

- ▶ Model no. VPS-01
(to be added to hood model no.)

Technical Information

Fume hood Dimensions	Exterior Dimensions			Sash Opening	Interior Dimensions			Viewing Dimensions
	Width	Depth	Height		Width	Depth	Height	
48" type	48"	32.75" or 38.75"	55"	38.5" x 27.25"	38.5"	27.375" or 33,375"	48"	38.5" x 32"
60" type	60"	32.75" or 38.75"	55"	50.5" x 27.25"	50.5"	27.375" or 33,375"	48"	50.5" x 32"
72" type	72"	32.75" or 38.75"	55"	62.5" x 27.25"	62.5"	27.375" or 33,375"	48"	62.5" x 32"



Exhaust air volumes are calculated using one side opening at the time

			Exhaust data with 27.25" full open sash					
			100 feet/minute velocity			80 feet/minute velocity		
Hood width	Face Opening	Duct collar size diameter	Exhaust CFM	Duct collar FPM	Static pressure loss	Exhaust CFM	Duct collar FPM	Static pressure loss
48"	38.5" x 27.25"	1x 10"	728	1334	0.18"	583	1069	0.12"
60"	50.5" x 27.25"	1x 12"	955	1215	0.25"	765	973	0.17"
72"	62.5" x 27.25"	1x 12"	1183	1506	0.30"	946	1205	0.22"

			Exhaust data with 18" open sash					
			100 feet/minute velocity			80 feet/minute velocity		
Hood width	Face Opening	Duct collar size diameter	Exhaust CFM	Duct collar FPM	Static pressure loss	Exhaust CFM	Duct collar FPM	Static pressure loss
48"	38.5" x 18"	1x 10"	481	882	0.12"	385	706	0.08"
60"	50.5" x 18"	1x 12"	631	803	0.18"	505	643	0.12"
72"	62.5" x 18"	1x 12"	781	994	0.21"	625	795	0.15"

It is recommended to add a 3 % safety leak factor to all above exhaust calculated volumes in order to compensate normal site system air leakage.