

Features

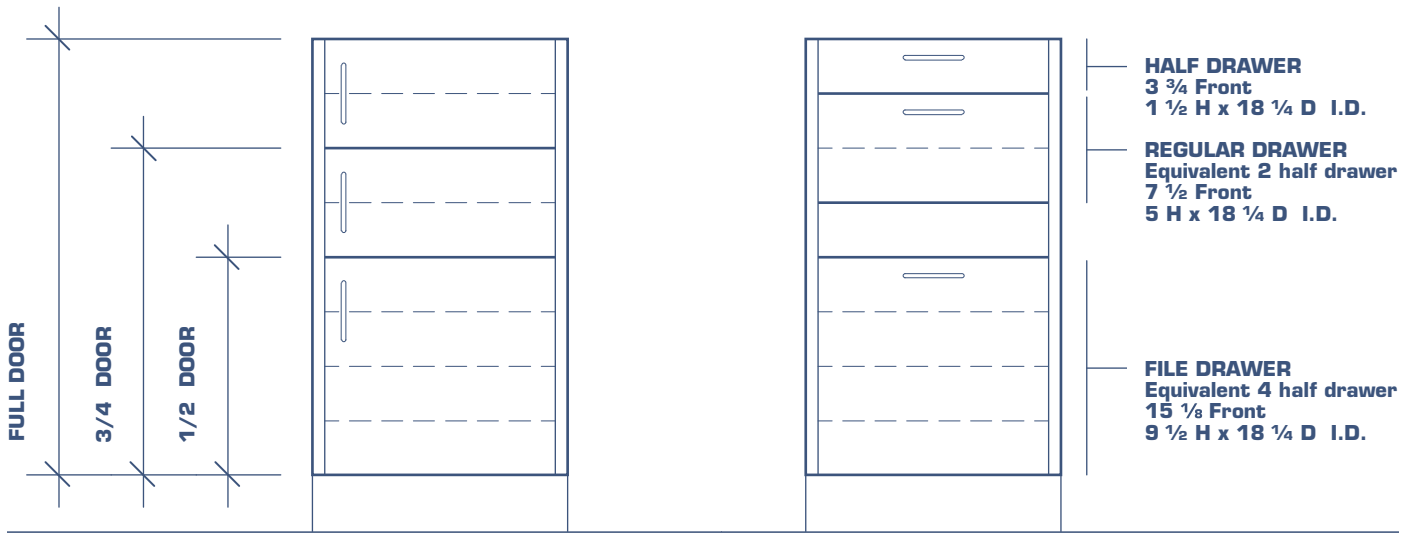
Benefits

1	Superior front horizontal rail.	Additional rigidity. Impurity prevention.
2	Removable front center post.	Full flexibility for all door and drawer arrangements.
3	The front posts can accommodate varying arrangements of doors & drawers.	Flexibility even after installation.
4	Wrap-around cabinet shell construction.	Provides maximum strength and eliminates need for fixed finished back.
5	Removable back panel.	Allows accessibility to mechanical services.
6	Slotted rear post.	Support for slide arms and shelves. Full flexibility for future needs.
7	Cabinet body is fully enclosed.	Facilitating maintenance and cleaning.
8	Extended drawer depth.	Maximized storage capacity.
9	Insulated facades.	Operational noise reduced to a minimum.
10	Self-closing ball bearing slide arms.	Avoiding accidental spills
11	Threaded 5/16" leveler with large foot.	Solid, sturdy and prevents scratching.
12	Various standard handles.	Adhere to design intent.

Forte Inset Door/Drawer Combination Possibilities



Our cabinet design is engineered for interchangeability of the same drawer and door heights for all different cabinet types including the following drawer and door heights:

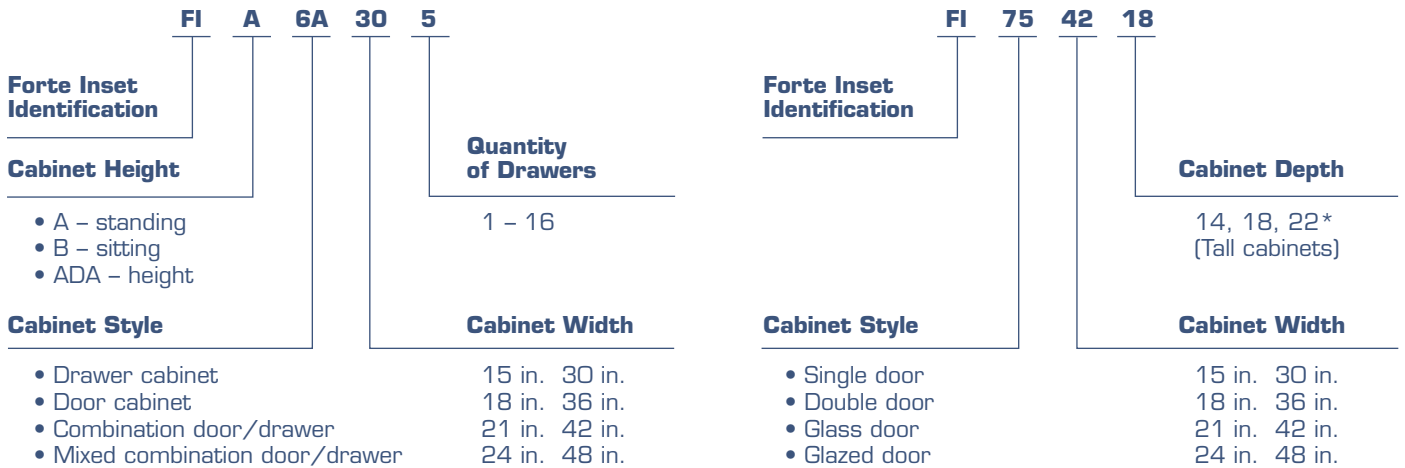


* The top drawer and full height door on an ADA cabinet are of different heights than for all other cabinets and will only fit at this position.

Reading the product identification numbers code

The Bedcolab product identification number is simple, making it easy to verify that you have ordered the correct cabinet. Each number or letter in the designation represents an aspect of the cabinet. Below are examples of the product identification numbers you will see in this catalogue along with an explanation of each designation:

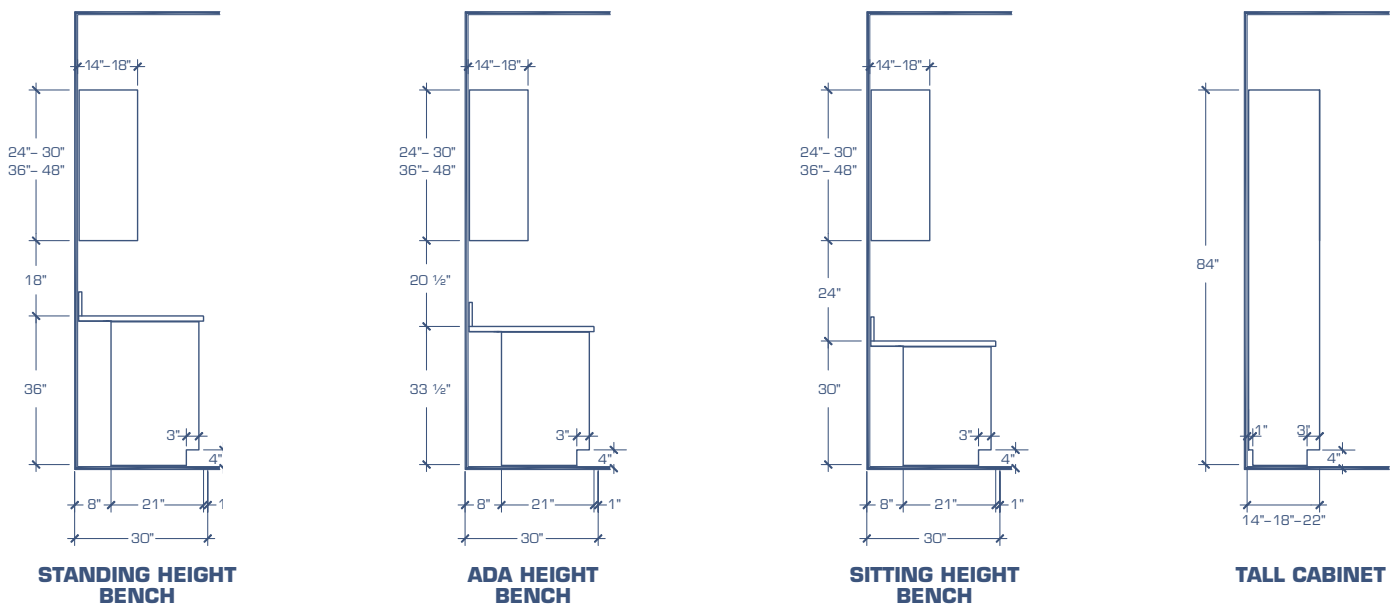
Product Identification Code



Base cabinets

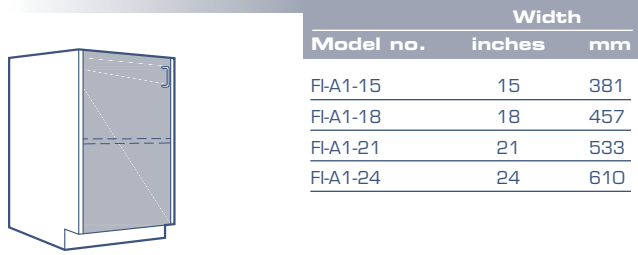
Wall and tall cabinets

Please refer to pages 38 and 39 of this Forte Inset catalogue for hardware options and optional cabinet features.



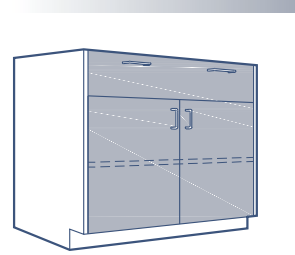
Typical Side Views

Standing Height Base Cabinets



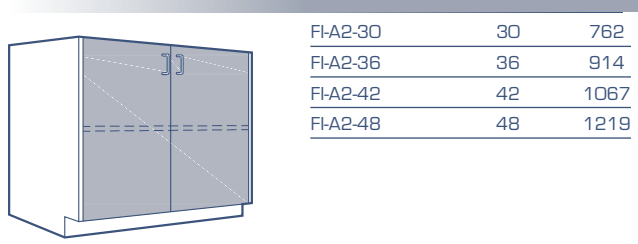
Model no.	Width	
	inches	mm
FI-A1-15	15	381
FI-A1-18	18	457
FI-A1-21	21	533
FI-A1-24	24	610

1 door unit



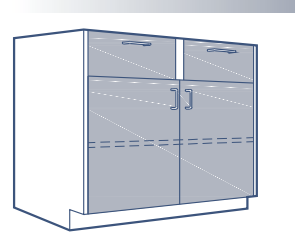
Model no.	Width	
	inches	mm
FI-A5-30-1	30	762
FI-A5-36-1	36	914
FI-A5-42-1	42	1067
FI-A5-48-1	48	1219

1 drawer & 2 door unit



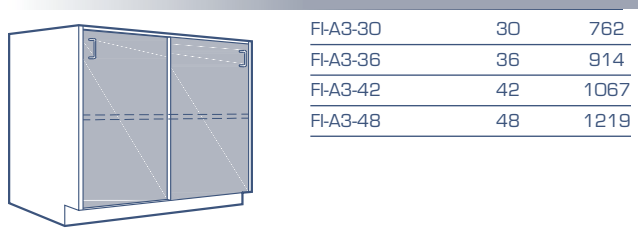
FI-A2-30	30	762
FI-A2-36	36	914
FI-A2-42	42	1067
FI-A2-48	48	1219

2 door unit



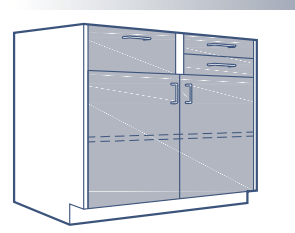
FI-A5-30-2	30	762
FI-A5-36-2	36	914
FI-A5-42-2	42	1067
FI-A5-48-2	48	1219

2 drawer & 2 door unit



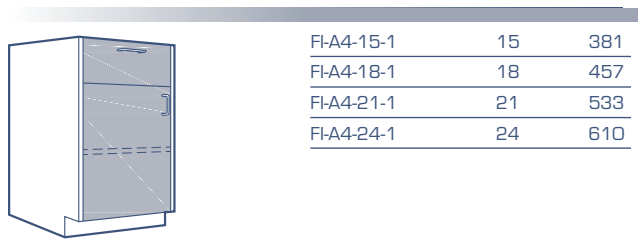
FI-A3-30	30	762
FI-A3-36	36	914
FI-A3-42	42	1067
FI-A3-48	48	1219

2 sliding door unit



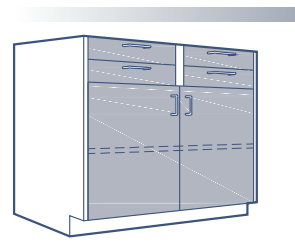
FI-A5-30-3	30	762
FI-A5-36-3	36	914
FI-A5-42-3	42	1067
FI-A5-48-3	48	1219

2 half drawer, 1 drawer & 2 door unit



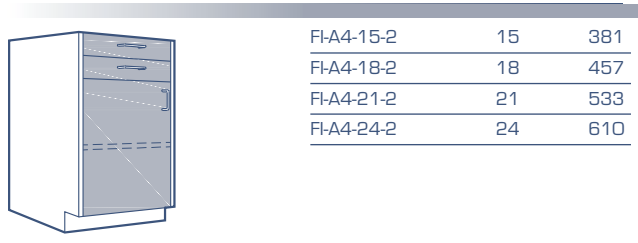
FI-A4-15-1	15	381
FI-A4-18-1	18	457
FI-A4-21-1	21	533
FI-A4-24-1	24	610

1 drawer & 1 door unit



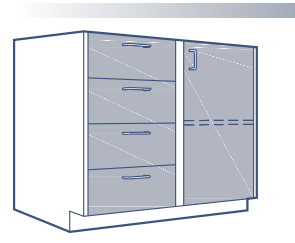
FI-A5-30-4	30	762
FI-A5-36-4	36	914
FI-A5-42-4	42	1067
FI-A5-48-4	48	1219

4 half drawer & 2 door unit



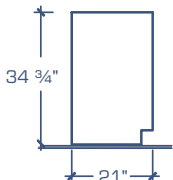
FI-A4-15-2	15	381
FI-A4-18-2	18	457
FI-A4-21-2	21	533
FI-A4-24-2	24	610

2 half drawer & 1 door unit



FI-A6-30-4	30	762
FI-A6-36-4	36	914
FI-A6-42-4	42	1067
FI-A6-48-4	48	1219

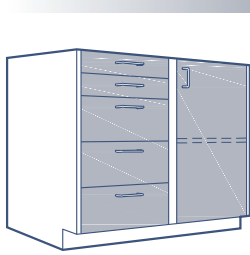
4 drawer & 1 door unit



Legend:

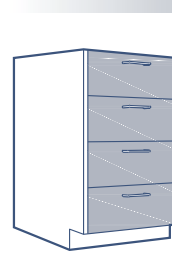
- *1 Double pulls on 30" to 48" cabinet sizes
- *2 File drawers supplied with hanger bars and full extension slide arms to fit legal or letter size files
- *3 Full extension drawer slide arms supplied as standard on these cabinets
- *4 Back panels in these cabinets are 9" high

Reverse models are also available by adding "RV" to model number.



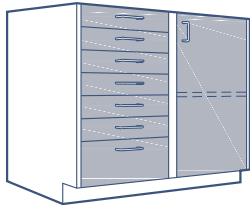
Model no.	Width	
	inches	mm
FI-A6-30-5	30	762
FI-A6-36-5	36	914
FI-A6-42-5	42	1067
FI-A6-48-5	48	1219

2 half drawer, 3 drawer & 1 door unit



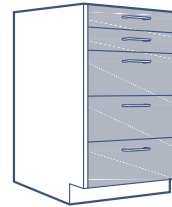
Model no.	Width	
	inches	mm
FI-A7-15-4	15	381
FI-A7-18-4	18	457
FI-A7-21-4	21	533
FI-A7-24-4	24	610
FI-A7-30-4 *1	30	762
FI-A7-36-4 *1	36	914
FI-A7-42-4 *1*3	42	1067
FI-A7-48-4 *1*3	48	1219

4 drawer unit



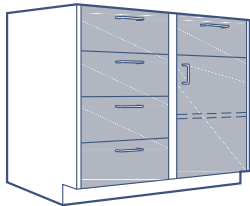
FI-A6-30-7	30	762
FI-A6-36-7	36	914
FI-A6-42-7	42	1067
FI-A6-48-7	48	1219

6 half drawer, 1 drawer & 1 door unit



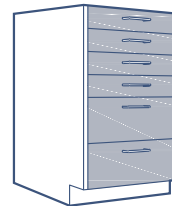
FI-A7-15-5	15	381
FI-A7-18-5	18	457
FI-A7-21-5	21	533
FI-A7-24-5	24	610
FI-A7-30-5 *1	30	762
FI-A7-36-5 *1	36	914
FI-A7-42-5 *1*3	42	1067
FI-A7-48-5 *1*3	48	1219

2 half drawer & 3 drawer unit



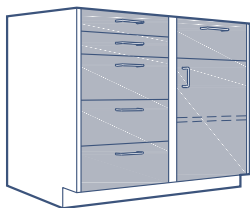
FI-A6A-30-5	30	762
FI-A6A-36-5	36	914
FI-A6A-42-5	42	1067
FI-A6A-48-5	48	1219

5 drawer & 1 door unit



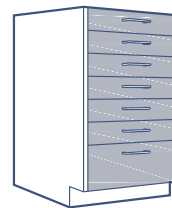
FI-A7-15-6	15	381
FI-A7-18-6	18	457
FI-A7-21-6	21	533
FI-A7-24-6	24	610
FI-A7-30-6 *1	30	762
FI-A7-36-6 *1	36	914
FI-A7-42-6 *1*3	42	1067
FI-A7-48-6 *1*3	48	1219

4 half drawer & 2 drawer unit



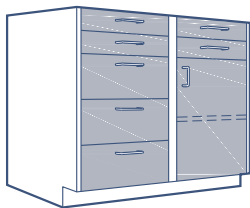
FI-A6A-30-6	30	762
FI-A6A-36-6	36	914
FI-A6A-42-6	42	1067
FI-A6A-48-6	48	1219

2 half drawer, 4 drawer & 1 door unit



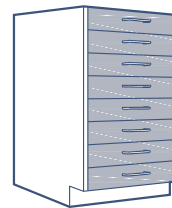
FI-A7-15-7	15	381
FI-A7-18-7	18	457
FI-A7-21-7	21	533
FI-A7-24-7	24	610
FI-A7-30-7 *1	30	762
FI-A7-36-7 *1	36	914
FI-A7-42-7 *1*3	42	1067
FI-A7-48-7 *1*3	48	1219

6 half drawer & 1 drawer unit



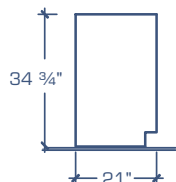
FI-A6A-30-7	30	762
FI-A6A-36-7	36	914
FI-A6A-42-7	42	1067
FI-A6A-48-7	48	1219

4 half drawer, 3 drawer & 1 door unit



FI-A7-15-8	15	381
FI-A7-18-8	18	457
FI-A7-21-8	21	533
FI-A7-24-8	24	610
FI-A7-30-8 *1	30	762
FI-A7-36-8 *1	36	914
FI-A7-42-8 *1*3	42	1067
FI-A7-48-8 *1*3	48	1219

8 half drawer unit

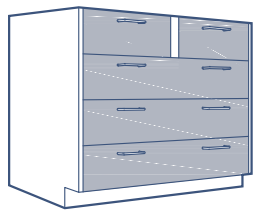


Legend:

- *1 Double pulls on 30" to 48" cabinet sizes
- *2 File drawers supplied with hanger bars and full extension slide arms to fit legal or letter size files
- *3 Full extension drawer slide arms supplied as standard on these cabinets
- *4 Back panels in these cabinets are 9" high

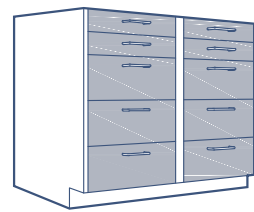
Reverse models are also available by adding "RV" to model number.

Standing Height Base Cabinets



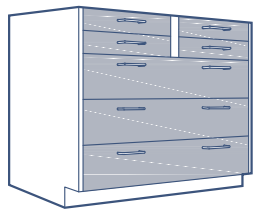
Model no.	Width	
	inches	mm
FI-A8-30-5 *1	30	762
FI-A8-36-5 *1	36	914
FI-A8-42-5 *1*3	42	1067
FI-A8-48-5 *1*3	48	1219

5 drawer unit



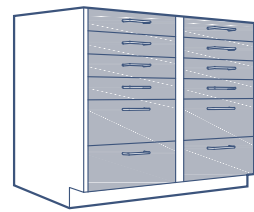
Model no.	Width	
	inches	mm
FI-A10-30-10	30	762
FI-A10-36-10	36	914
FI-A10-42-10	42	1067
FI-A10-48-10	48	1219

4 half drawer & 6 drawer unit



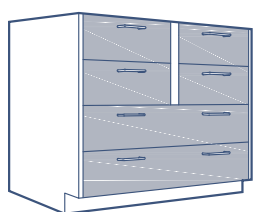
FI-A8-30-7 *1	30	762
FI-A8-36-7 *1	36	914
FI-A8-42-7 *1*3	42	1067
FI-A8-48-7 *1*3	48	1219

4 half drawer & 3 drawer unit



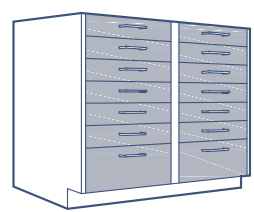
FI-A10-30-12	30	762
FI-A10-36-12	36	914
FI-A10-42-12	42	1067
FI-A10-48-12	48	1219

8 half drawer & 4 drawer unit



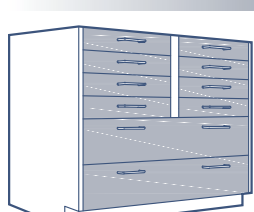
FI-A9-30-6 *1	30	762
FI-A9-36-6 *1	36	914
FI-A9-42-6 *1*3	42	1067
FI-A9-48-6 *1*3	48	1219

6 drawer unit



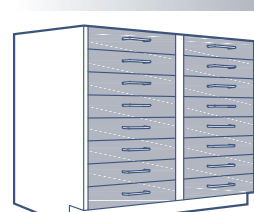
FI-A10-30-14	30	762
FI-A10-36-14	36	914
FI-A10-42-14	42	1067
FI-A10-48-14	48	1219

12 half drawer & 2 drawer unit



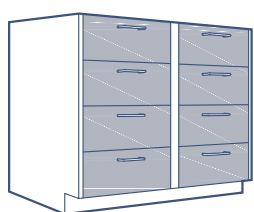
FI-A9-30-10 *1	30	762
FI-A9-36-10 *1	36	914
FI-A9-42-10 *1*3	42	1067
FI-A9-48-10 *1*3	48	1219

8 half drawer & 2 drawer unit



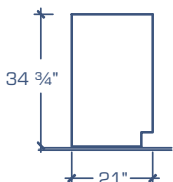
FI-A10-30-16	30	762
FI-A10-36-16	36	914
FI-A10-42-16	42	1067
FI-A10-48-16	48	1219

16 half drawer unit



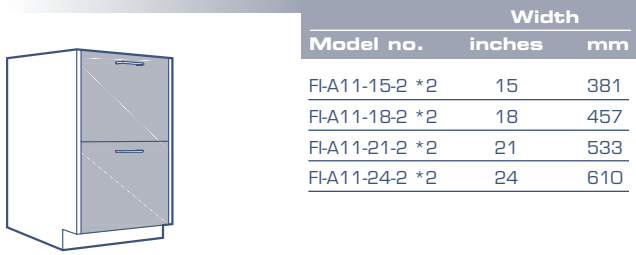
FI-A10-30-8	30	762
FI-A10-36-8	36	914
FI-A10-42-8	42	1067
FI-A10-48-8	48	1219

8 drawer unit



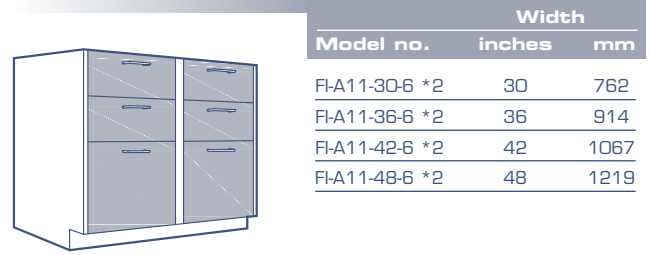
Legend:

- *1 Double pulls on 30" to 48" cabinet sizes
- *2 File drawers supplied with hanger bars and full extension slide arms to fit legal or letter size files
- *3 Full extension drawer slide arms supplied as standard on these cabinets
- *4 Back panels in these cabinets are 9" high



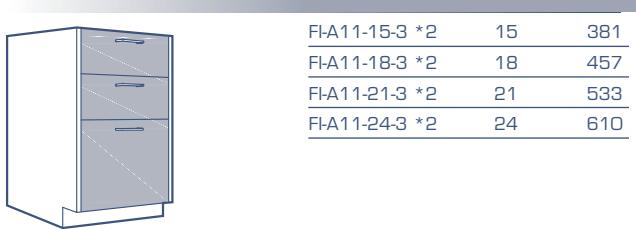
Model no.	Width	
	inches	mm
FI-A11-15-2 *2	15	381
FI-A11-18-2 *2	18	457
FI-A11-21-2 *2	21	533
FI-A11-24-2 *2	24	610

2 file drawer unit



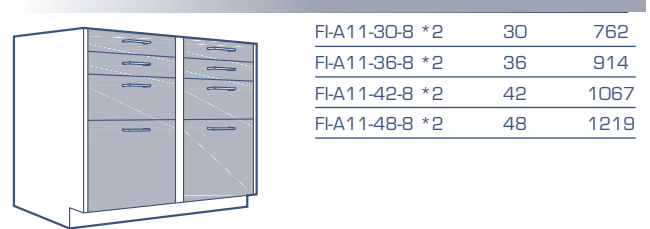
Model no.	Width	
	inches	mm
FI-A11-30-6 *2	30	762
FI-A11-36-6 *2	36	914
FI-A11-42-6 *2	42	1067
FI-A11-48-6 *2	48	1219

4 drawer & 2 file drawer unit



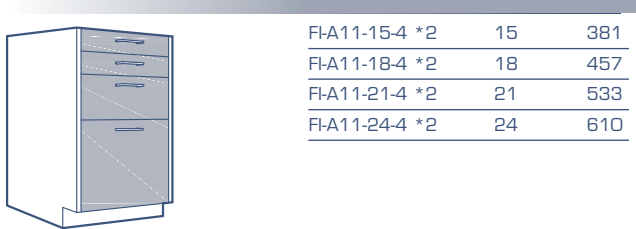
FI-A11-15-3 *2	15	381
FI-A11-18-3 *2	18	457
FI-A11-21-3 *2	21	533
FI-A11-24-3 *2	24	610

2 drawer & 1 file drawer unit



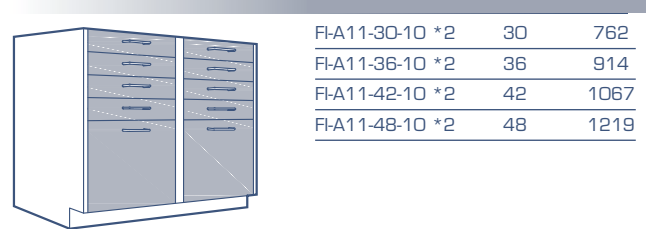
FI-A11-30-8 *2	30	762
FI-A11-36-8 *2	36	914
FI-A11-42-8 *2	42	1067
FI-A11-48-8 *2	48	1219

4 half drawer, 2 drawer & 2 file drawer unit



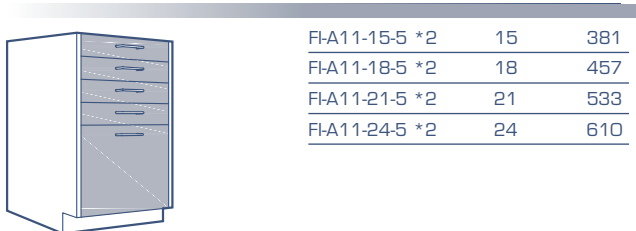
FI-A11-15-4 *2	15	381
FI-A11-18-4 *2	18	457
FI-A11-21-4 *2	21	533
FI-A11-24-4 *2	24	610

2 half drawer, 1 drawer & 1 file drawer unit



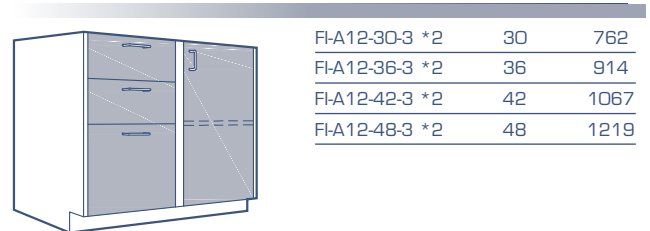
FI-A11-30-10 *2	30	762
FI-A11-36-10 *2	36	914
FI-A11-42-10 *2	42	1067
FI-A11-48-10 *2	48	1219

8 half drawer & 2 file drawer unit



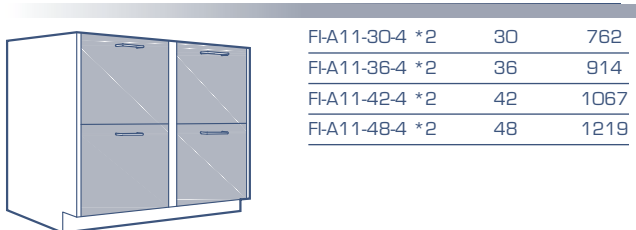
FI-A11-15-5 *2	15	381
FI-A11-18-5 *2	18	457
FI-A11-21-5 *2	21	533
FI-A11-24-5 *2	24	610

4 half drawer & 1 file drawer unit



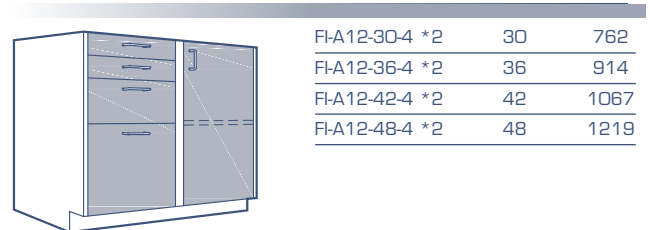
FI-A12-30-3 *2	30	762
FI-A12-36-3 *2	36	914
FI-A12-42-3 *2	42	1067
FI-A12-48-3 *2	48	1219

2 drawer, 1 file drawer & 1 door unit



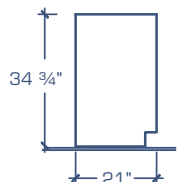
FI-A11-30-4 *2	30	762
FI-A11-36-4 *2	36	914
FI-A11-42-4 *2	42	1067
FI-A11-48-4 *2	48	1219

4 file drawer unit



FI-A12-30-4 *2	30	762
FI-A12-36-4 *2	36	914
FI-A12-42-4 *2	42	1067
FI-A12-48-4 *2	48	1219

2 half drawer, 1 drawer, 1 file drawer & 1 door unit

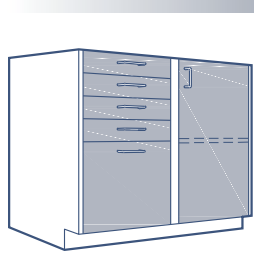


Legend:

- *1 Double pulls on 30" to 48" cabinet sizes
- *2 File drawers supplied with hanger bars and full extension slide arms to fit legal or letter size files
- *3 Full extension drawer slide arms supplied as standard on these cabinets
- *4 Back panels in these cabinets are 9" high

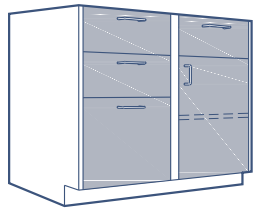
Reverse models are also available by adding "RV" to model number.

Standing Height Base Cabinets



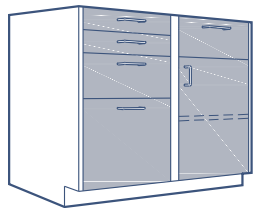
Model no.	Width	
	inches	mm
FI-A12-30-5 *2	30	762
FI-A12-36-5 *2	36	914
FI-A12-42-5 *2	42	1067
FI-A12-48-5 *2	48	1219

4 half drawer, 1 file drawer & 1 door unit



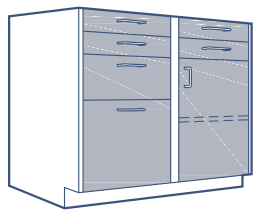
FI-A13-30-4 *2	30	762
FI-A13-36-4 *2	36	914
FI-A13-42-4 *2	42	1067
FI-A13-48-4 *2	48	1219

3 drawer, 1 file drawer & 1 door unit



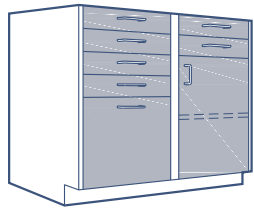
FI-A13-30-5 *2	30	762
FI-A13-36-5 *2	36	914
FI-A13-42-5 *2	42	1067
FI-A13-48-5 *2	48	1219

2 half drawer, 2 drawer, 1 file drawer & 1 door unit



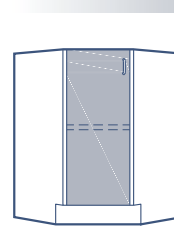
FI-A13-30-6 *2	30	762
FI-A13-36-6 *2	36	914
FI-A13-42-6 *2	42	1067
FI-A13-48-6 *2	48	1219

4 half drawer, 1 drawer, 1 file drawer & 1 door unit



FI-A13-30-7 *2	30	762
FI-A13-36-7 *2	36	914
FI-A13-42-7 *2	42	1067
FI-A13-48-7 *2	48	1219

6 half drawer, 1 file drawer & 1 door unit

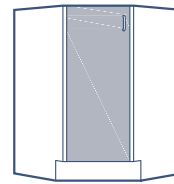


Model no.	Width	
	inches	mm
FI-A18-31	14,5	787

Description

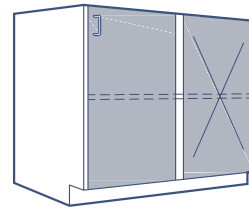
- 2 pieces shelf

45° corner unit



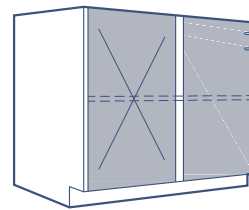
FI-A-18S-31 *4	14,5	787
----------------	------	-----

45° corner sink unit



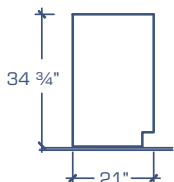
FI-A20-30	30	762
FI-A20-36	36	914
FI-A20-42	42	1067
FI-A20-48	48	1219

Corner unit



FI-A21-30	30	762
FI-A21-36	36	914
FI-A21-42	42	1067
FI-A21-48	48	1219

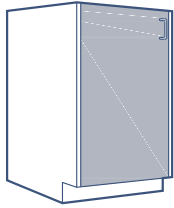
Corner unit



Legend:

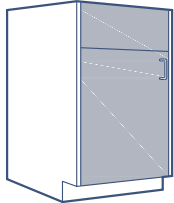
- *1 Double pulls on 30" to 48" cabinet sizes
- *2 File drawers supplied with hanger bars and full extension slide arms to fit legal or letter size files
- *3 Full extension drawer slide arms supplied as standard on these cabinets
- *4 Back panels in these cabinets are 9" high

Reverse models are also available by adding "RV" to model number.



Model no.	Width	
	inches	mm
FI-A15-15 *4	15	381
FI-A15-18 *4	18	457
FI-A15-21 *4	21	533
FI-A15-24 *4	24	610

1 door sink unit

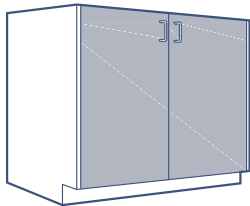


FI-A15A-15 *4	15	381
FI-A15A-18 *4	18	457
FI-A15A-21 *4	21	533
FI-A15A-24 *4	24	610

Description

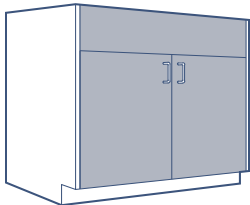
- Fixed upper panel for mounting of services.
- This unit is mostly used under fume hoods where services are deck mounted.

1 door sink unit - false panel above



FI-A16-30 *4	30	762
FI-A16-36 *4	36	914
FI-A16-42 *4	42	1067
FI-A16-48 *4	48	1219

2 doors sink unit

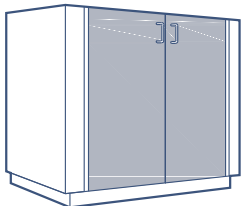


FI-A16A-30 *4	30	762
FI-A16A-36 *4	36	914
FI-A16A-42 *4	42	1067
FI-A16A-48 *4	48	1219

Description

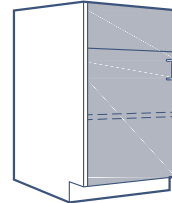
- Fixed upper panel for mounting of services.
- This unit is mostly used under fume hoods where services are deck mounted.

2 door sink unit - false panel above



FI-A17-52 *4	52	1321
FI-A17-58 *4	58	1473

Island end sink unit

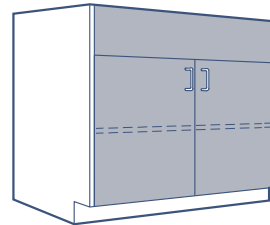


FI-A24-18	18	457
FI-A24-24	24	610

Description

- Fixed upper panel for mounting of services.
- This unit is mostly used under fume hoods where services are deck mounted.

Remote control unit - 1 door

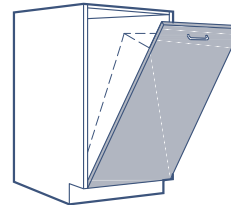


FI-A24-30	30	762
FI-A24-36	36	914
FI-A24-48	48	1219

Description

- Fixed upper panel for mounting of services.
- This unit is mostly used under fume hoods where services are deck mounted.

Remote control unit - 2 doors

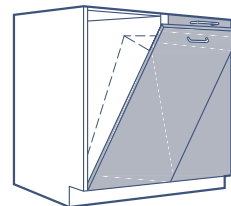


FI-A28-18	18	457
FI-A28-24	24	316

Description

- Bins are not included.
- Bins can be supplied by adding the following letters after catalog number:
 - "GB" for galvanized steel;
 - "SB" for stainless steel T.304;
 - "LP" for leak proof.

1 door bin unit

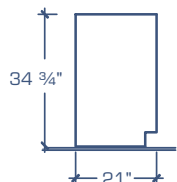


FI-A29-36	36	914
FI-A29-48	48	1219

Description

- Bins are not included.
- Bins can be supplied by adding the following letters after catalog number:
 - "GB" for galvanized steel;
 - "SB" for stainless steel T.304;
 - "LP" for leak proof.

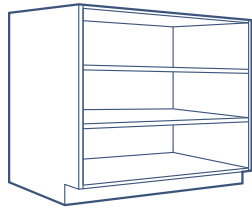
2 door bin unit



Legend:

- *1 Double pulls on 30" to 48" cabinet sizes
- *2 File drawers supplied with hanger bars and full extension slide arms to fit legal or letter size files
- *3 Full extension drawer slide arms supplied as standard on these cabinets
- *4 Back panels in these cabinets are 9" high

Standing Height Base Cabinets

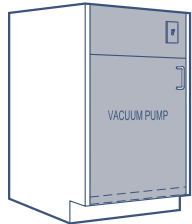


Open unit

	Width	
FI-A35-15	15	381
FI-A35-18	18	457
FI-A35-21	21	533
FI-A35-24	24	610
FI-A35-30	30	762
FI-A35-36	36	914
FI-A35-42	42	1067
FI-A35-48	48	1219

Description

- Two (2) adjustable shelves.



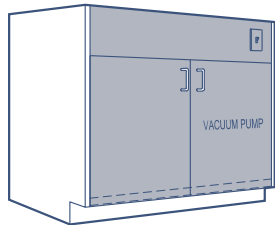
Pump unit, 1 door

FI-A41-15	15	381
FI-A41-18	18	457
FI-A41-21	21	533
FI-A41-24	24	610

Description

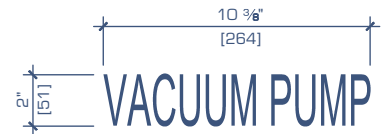
All pump cabinets are supplied with the following:

- Pull out tray located at the bottom of cabinet on 200 lbs capacity full extension tracks
- Prewired duplex 120V/20A plug inside cabinet with power switch located on front apron and wired to a junction box located at the back of the cabinet (access panel from inside the cabinet)
- Double wall perforated cabinet sides, back and top with sound insulation
- Unit can be supplied with "Silk screen" signage by adding "SC" after model number



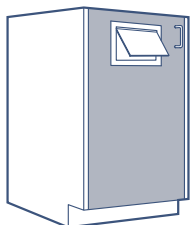
Pump unit, 2 doors

FI-A41-30	30	762
FI-A41-36	36	914
FI-A41-42	42	1067
FI-A41-48	48	1219



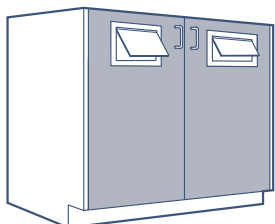
Pump Cabinet Signage

BLACK LETTERS



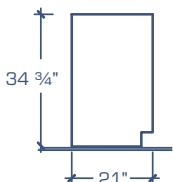
Door cabinet with stainless steel chute 8" x 6 1/2" high

FI-A42-15	15	381
FI-A42-18	18	457
FI-A42-21	21	533
FI-A42-24	24	610



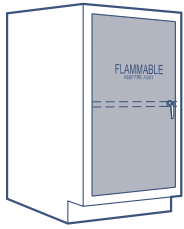
Door cabinet with stainless steel chute 8" x 6 1/2" high

FI-A42-30	30	762
FI-A42-36	36	914
FI-A42-42	42	1067
FI-A42-48	48	1219



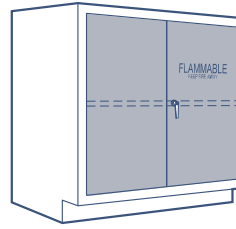
Legend:

- *1 Double pulls on 30" to 48" cabinet sizes
- *2 File drawers supplied with hanger bars and full extension slide arms to fit legal or letter size files
- *3 Full extension drawer slide arms supplied as standard on these cabinets
- *4 Back panels in these cabinets are 9" high



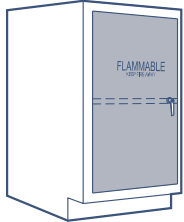
Model no.	Width	
	inches	mm
FI-A23-18-JL	21	533
FI-A23-24-JL	24	610

Flammable unit - 1 door



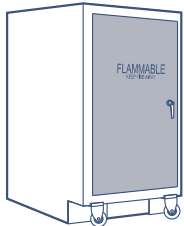
Model no.	Width	
	inches	mm
FI-A23-30-18-JL	30	762
FI-A23-36-18-JL	36	914
FI-A23-48-18-JL	48	1219

Flammable unit 18" deep - 2 doors



FI-A23-18-18-JL	18	457
FI-A23-24-18-JL	24	610

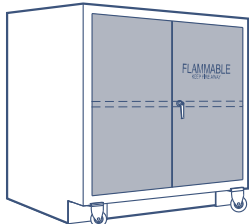
Flammable unit 18" deep - 1 door



FI-A23-24-JL-SB	24	610
-----------------	----	-----

* Cabinets come with finished back and finished top

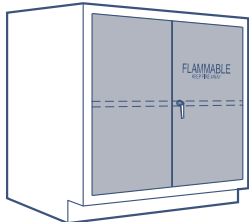
Mobile Flammable unit - 1 door



FI-A23-30-JL-SB	30	762
-----------------	----	-----

* Cabinets come with finished back and finished top

Mobile Flammable unit - 2 doors



FI-A23-30-JL	30	762
FI-A23-36-JL	36	914
FI-A23-48-JL	48	1219

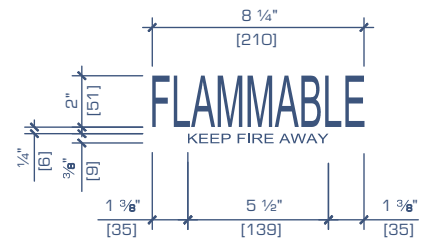
Flammable unit - 2 doors

Description

For all flammable cabinets shown on this page:

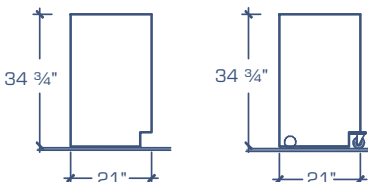
- Solvent storage units meet O.S.H.A. standards and comply with N.F.P.A. code no 30 for flammable and combustible liquids
- Two fire baffle vents are located in back of unit.
- Door is hinged with a continuous painted steel hinge
- Recessed base to match standard base cabinets.
- One galvanized steel shelf adjustable on 2" increment
- Galvanized liquid proof bottom pan 2" deep
- Three point locking handle
- Standard safety yellow exterior color
- Unit can be supplied with "Silk screen" signage by adding "SC" after model number

Listed by Intertek to UL1275 and UL1275C



Flammable Cabinet Signage

RED LETTERS

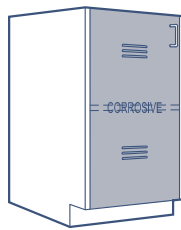


Legend:

- *1 Double pulls on 30" to 48" cabinet sizes
- *2 File drawers supplied with hanger bars and full extension slide arms to fit legal or letter size files
- *3 Full extension drawer slide arms supplied as standard on these cabinets
- *4 Back panels in these cabinets are 9" high

Self closing door(s) option available by adding "AC" to model number.

Standing Height Corrosive Cabinets



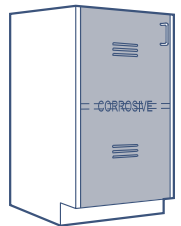
Model no.	Width	
	inches	mm
FI-A25-18	18	457
FI-A25-24	24	610

Corrosive unit - 1 door

Description

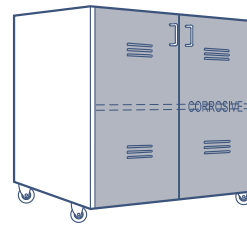
For all corrosive cabinets shown on this page

- Unit is lined with chemical resistant molded polypropylene liner with an adjustable 2-positions HDPE shelf the full depth and width of the cabinet.
- Unit can be vented into fume hood by adding "V" after model number
- Unit can be supplied with "Silk screen" signage by adding "SC" after model number



FI-A25-18-18	18	457
FI-A25-24-18	24	610

Corrosive unit 18" deep - 1 door



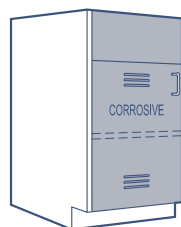
FI-A25-30-SS	30	762
--------------	----	-----

Description

- Unit is supplied with four 4" high swivel casters with locks on the 2 front casters

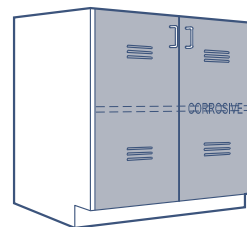
*** Cabinets come with finished back and finished top**

Mobile Corrosive unit - 2 doors *



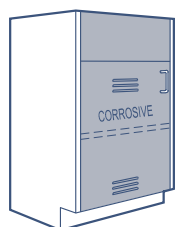
FI-A26-18	18	457
FI-A26-24	24	610

Corrosive unit - 1 door, false panel above



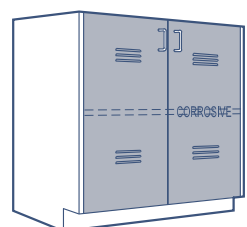
FI-A25-30	30	762
FI-A25-36	36	914
FI-A25-48	48	1219

Corrosive unit - 2 doors



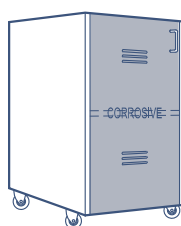
FI-A26-18-18	18	457
FI-A26-24-18	24	610

Corrosive unit 18" deep - 1 door, false panel above



FI-A25-30-18	30	762
FI-A25-36-18	36	914
FI-A25-48-18	48	1219

Corrosive unit 18" deep - 2 doors



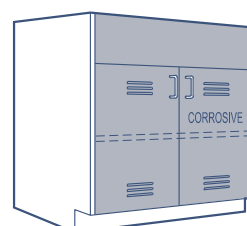
FI-A25-24-SS	24	610
--------------	----	-----

Mobile Corrosive unit - 1 door*

Description

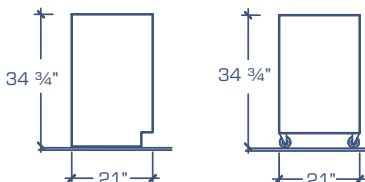
- Unit is supplied with four 4" high swivel casters with locks on the 2 front casters

*** Cabinets come with finished back and finished top**



FI-A26-30	30	762
FI-A26-36	36	914
FI-A26-48	48	1219

Corrosive unit - 2 doors, blank panel above



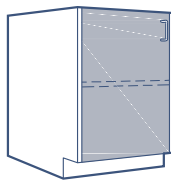
Legend:

- *1 Double pulls on 30" to 48" cabinet sizes
- *2 File drawers supplied with hanger bars and full extension slide arms to fit legal or letter size files
- *3 Full extension drawer slide arms supplied as standard on these cabinets
- *4 Back panels in these cabinets are 9" high



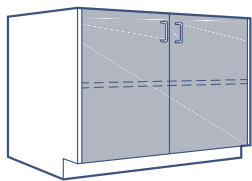
Corrosive Cabinet Signage

BLUE LETTERS



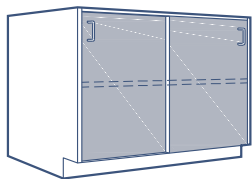
Model no.	Width	
	inches	mm
FI-B1-15	15	381
FI-B1-18	18	457
FI-B1-21	21	533
FI-B1-24	24	610

1 door unit



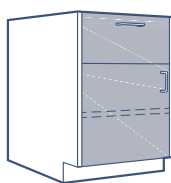
FI-B2-30	30	762
FI-B2-36	36	914
FI-B2-42	42	1067
FI-B2-48	48	1219

2 door unit



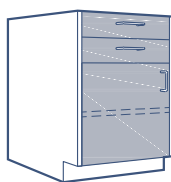
FI-B3-30	30	762
FI-B3-36	36	914
FI-B3-42	42	1067
FI-B3-48	48	1219

2 sliding door unit



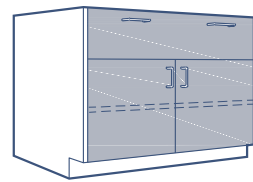
FI-B4-15-1	15	381
FI-B4-18-1	18	457
FI-B4-21-1	21	533
FI-B4-24-1	24	610

1 drawer & 1 door unit



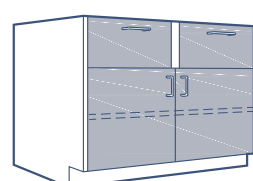
FI-B4-15-2	15	381
FI-B4-18-2	18	457
FI-B4-21-2	21	533
FI-B4-24-2	24	610

2 half drawer & 1 door unit



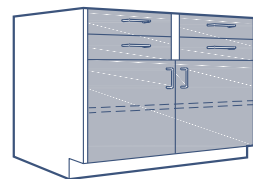
Model no.	Width	
	inches	mm
FI-B5-30-1 *1	30	762
FI-B5-36-1 *1	36	914
FI-B5-42-1 *1	42	1067
FI-B5-48-1 *1*3	48	1219

1 drawer & 2 door unit



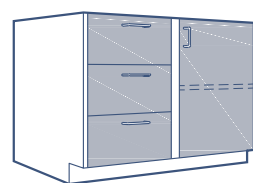
FI-B5-30-2	30	762
FI-B5-36-2	36	914
FI-B5-42-2	42	1067
FI-B5-48-2	48	1219

2 drawer & 2 door unit



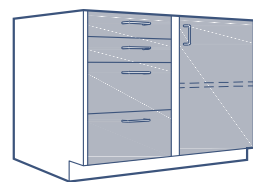
FI-B5-30-4	30	762
FI-B5-36-4	36	914
FI-B5-42-4	42	1067
FI-B5-48-4	48	1219

4 half drawer & 2 door unit



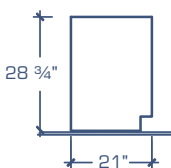
FI-B6-30-3	30	762
FI-B6-36-3	36	914
FI-B6-42-3	42	1067
FI-B6-48-3	48	1219

3 drawer & 1 door unit



FI-B6-30-4	30	762
FI-B6-36-4	36	914
FI-B6-42-4	42	1067
FI-B6-48-4	48	1219

2 half drawer, 2 drawer & 1 door unit

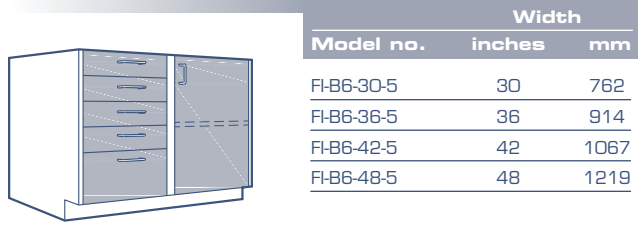


Legend:

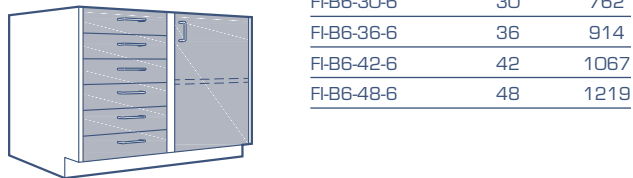
- *1 Double pulls on 30" to 48" cabinet sizes
- *2 File drawers supplied with hanger bars and full extension slide arms to fit legal or letter size files
- *3 Full extension drawer slide arms supplied as standard on these cabinets
- *4 Back panels in these cabinets are 9" high

Reverse models are also available by adding "RV" to model number.

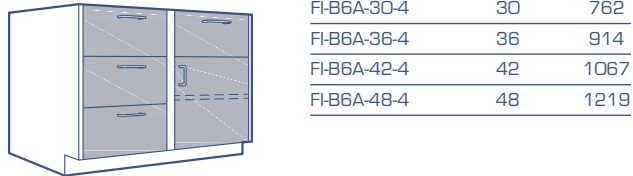
Sitting Height Base Cabinets



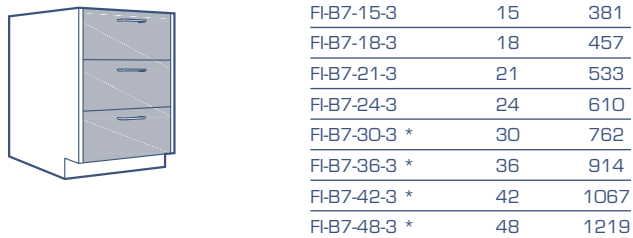
4 half drawer, 1 drawer & 1 door unit



6 half drawer & 1 door unit



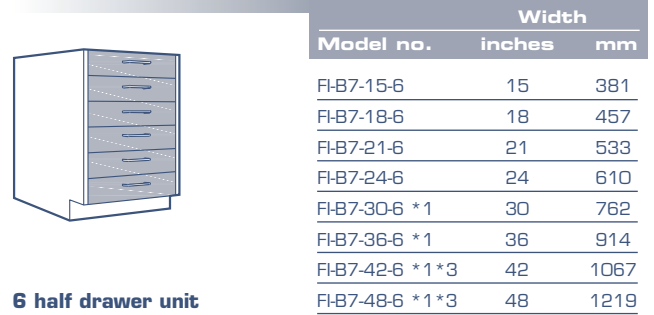
4 drawer & 1 door unit



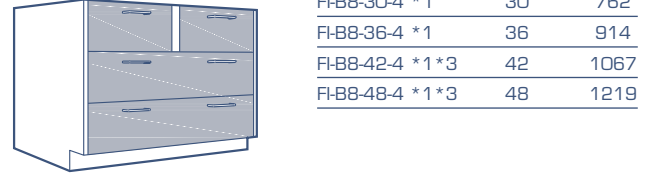
3 drawer unit



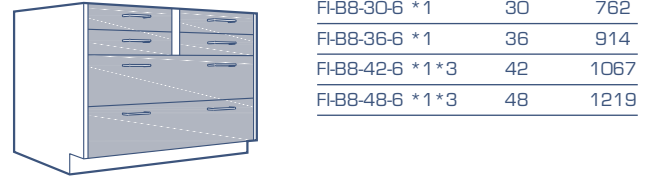
2 half drawer & 2 drawer unit



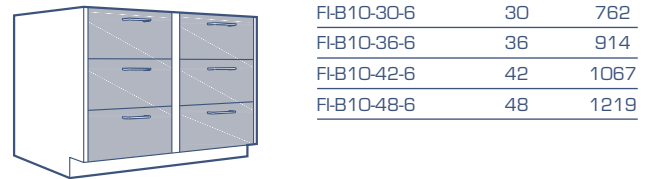
6 half drawer unit



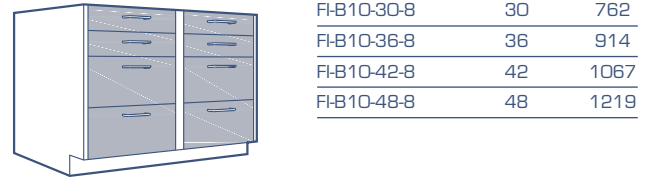
4 drawer unit



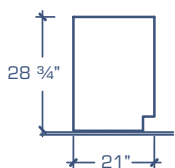
4 half drawer & 2 drawer unit



6 drawer unit



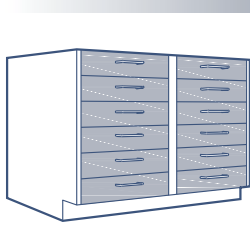
4 half drawer & 4 drawer unit



Legend:

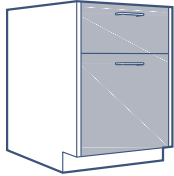
- *1 Double pulls on 30" to 48" cabinet sizes
- *2 File drawers supplied with hanger bars and full extension slide arms to fit legal or letter size files
- *3 Full extension drawer slide arms supplied as standard on these cabinets
- *4 Back panels in these cabinets are 9" high

Reverse models are also available by adding "RV" to model number.



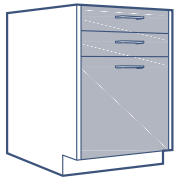
Model no.	Width	
	inches	mm
FI-B10-30-12	30	762
FI-B10-36-12	36	914
FI-B10-42-12	42	1067
FI-B10-48-12	48	1219

12 half drawer unit



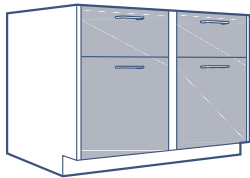
FI-B11-15-2 *2	15	381
FI-B11-18-2 *2	18	457
FI-B11-21-2 *2	21	533
FI-B11-24-2 *2	24	610

1 drawer & 1 file drawer unit



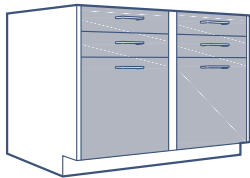
FI-B11-15-3 *2	15	381
FI-B11-18-3 *2	18	457
FI-B11-21-3 *2	21	533
FI-B11-24-3 *2	24	610

2 half drawer & 1 file drawer unit



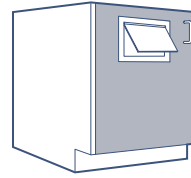
FI-B11-30-4 *2	30	762
FI-B11-36-4 *2	36	914
FI-B11-42-4 *2	42	1067
FI-B11-48-4 *2	48	1219

2 drawer & 2 file drawer unit



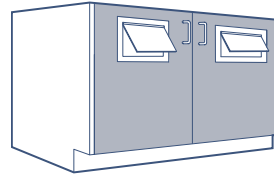
FI-B11-30-6 *2	30	762
FI-B11-36-6 *2	36	914
FI-B11-42-6 *2	42	1067
FI-B11-48-6 *2	48	1219

4 half drawer & 2 file drawer unit



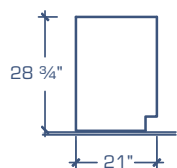
Model no.	Width	
	inches	mm
FI-B42-15	15	381
FI-B42-18	18	457
FI-B42-21	21	533
FI-B42-24	24	610

Door cabinet with stainless steel chute 8" x 6 1/2" w high



FI-B42-30	30	762
FI-B42-36	36	914
FI-B42-42	42	1067
FI-B42-48	48	1219

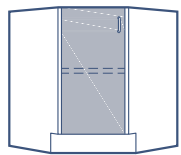
Door cabinet with stainless steel chute 8" x 6 1/2" high



Legend:

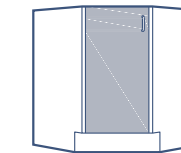
- *1 Double pulls on 30" to 48" cabinet sizes
- *2 File drawers supplied with hanger bars and full extension slide arms to fit legal or letter size files
- *3 Full extension drawer slide arms supplied as standard on these cabinets
- *4 Back panels in these cabinets are 9" high

Sitting Height Base Cabinets



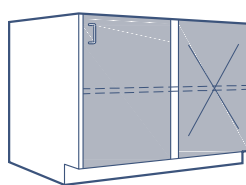
Model no.	Width	
	inches	mm
FI-B18-31	14,5	787

45° corner unit



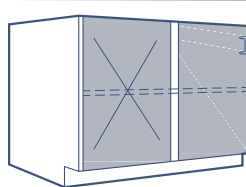
FI-B18S-31 *4	14,5	787
---------------	------	-----

45° corner sink unit



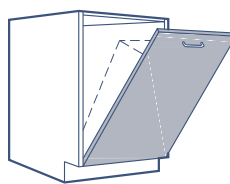
FI-B20-30	30	762
FI-B20-36	36	914
FI-B20-42	42	1067
FI-B20-48	48	1219

Corner unit



FI-B21-30	30	762
FI-B21-36	36	914
FI-B21-42	42	1067
FI-B21-48	48	1219

Corner unit

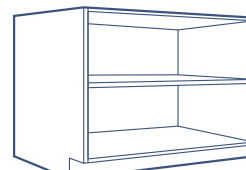


FI-B28-18	18	457
FI-B28-24	24	316

1 door bin unit

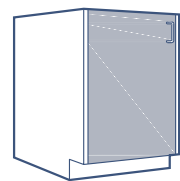
Description

- Bins are not included.
- Bins can be supplied by adding the following letters after catalog number:
 - "GB" for galvanized steel;
 - "SB" for stainless steel T.304;
 - "LP" for leak proof.



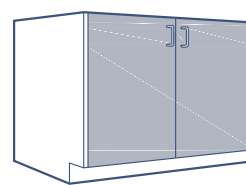
Model no.	Width	
	inches	mm
FI-B35-15	15	381
FI-B35-18	18	457
FI-B35-21	21	533
FI-B35-24	24	610
FI-B35-30	30	762
FI-B35-36	36	914
FI-B35-42	42	1067
FI-B35-48	48	1219

Open unit



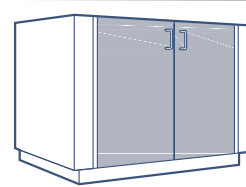
FI-B15-15 *4	15	381
FI-B15-18 *4	18	457
FI-B15-21 *4	21	533
FI-B15-24 *4	24	610

1 door sink unit



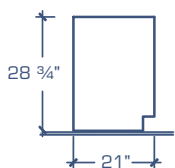
FI-B16-30 *4	30	762
FI-B16-36 *4	36	914
FI-B16-42 *4	42	1067
FI-B16-48 *4	48	1219

2 door sink unit



FI-B17-52	52	1321
FI-B17-58	58	1473

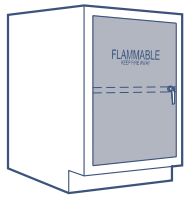
Island end sink unit



Legend:

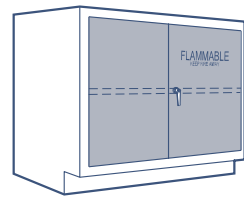
- *1 Double pulls on 30" to 48" cabinet sizes
- *2 File drawers supplied with hanger bars and full extension slide arms to fit legal or letter size files
- *3 Full extension drawer slide arms supplied as standard on these cabinets
- *4 Back panels in these cabinets are 9" high

Model no.	Width	
	inches	mm
FI-B23-18-UL	21	533
FI-B23-24-UL	24	610



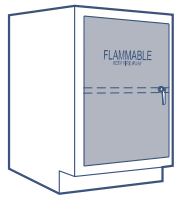
Flammable unit - 1 door

Model no.	Width	
	inches	mm
FI-B23-30-18-UL	30	762
FI-B23-36-18-UL	36	914
FI-B23-48-18-UL	48	1219



Flammable unit 18" deep - 2 doors

FI-B23-18-18-UL	18	457
FI-B23-24-18-UL	24	610



Flammable unit 18" deep - 1 door

FI-B23-24-SB-UL	24	533
-----------------	----	-----

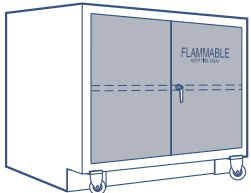
Cabinets come with finished back and finished top



Mobile Flammable unit - 1 door

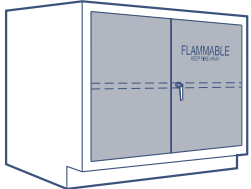
FI-B23-30-SB-UL	30	610
-----------------	----	-----

Cabinets come with finished back and finished top



Mobile Flammable unit - 2 doors

FI-B23-30-JL	30	762
FI-B23-36-JL	36	914
FI-B23-48-JL	48	1219



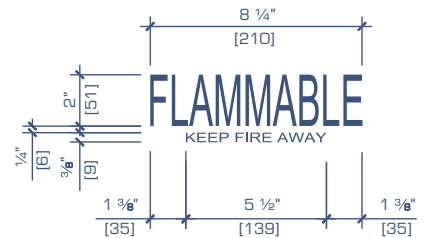
Flammable unit - 2 doors

Description

For all flammable cabinets shown on this page:

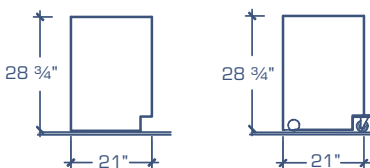
- Solvent storage units meet O.S.H.A. standards and comply with N.F.P.A. code no 30 for flammable and combustible liquids
- Two fire baffle vents are located in back of unit.
- Door is hinged with a continuous painted steel hinge
- Recessed base to match standard base cabinets.
- One galvanized steel shelf adjustable on 2" increment
- Galvanized liquid proof bottom pan 2" deep
- Three point locking handle
- Unit can be supplied with "Silk screen" signage by adding "SC" after model number

Listed by Intertek to UL1275 and UL1275C



Flammable Cabinet Signage

RED LETTERS

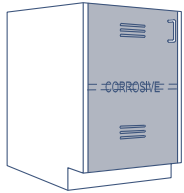


Legend:

- *1 Double pulls on 30" to 48" cabinet sizes
- *2 File drawers supplied with hanger bars and full extension slide arms to fit legal or letter size files
- *3 Full extension drawer slide arms supplied as standard on these cabinets
- *4 Back panels in these cabinets are 9" high

Self closing door(s) option available by adding "AC" to model number.

Sitting Height Corrosive Cabinets



Model no.	Width	
	inches	mm
FI-B25-18	18	457
FI-B25-24	24	610

Description

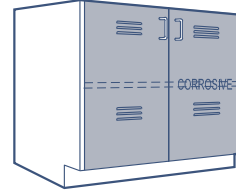
For all corrosive cabinets shown on this page

- Unit is lined with a chemically resistant molded polypropylene liner with an adjustable 2-positions HDPE shelf the full depth and width of the cabinet.
- Unit can be vented into fume hood by adding "V" after model number
- Unit can be supplied with "Silk screen" signage by adding "SC" after model number

Corrosive unit - 1 door

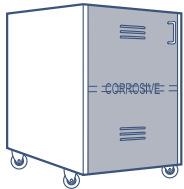


FI-B25-18-18	18	457
FI-B25-24-18	24	610



FI-B25-30-18	30	762
FI-B25-36-18	36	914
FI-B25-48-18	48	1219

Corrosive unit 18" deep - 1 door



FI-B25-24-SS	24	533
--------------	----	-----

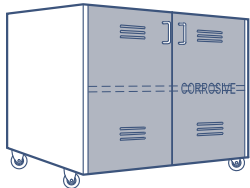
Description

- Unit is supplied with four swivel 4" high casters with locks on the 2 front casters

Cabinets come with finished back and finished top

Corrosive unit 18" deep - 2 doors

Mobile Corrosive unit - 1 door*



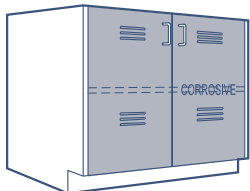
FI-B25-30-SS	30	610
--------------	----	-----

Description

- Unit is supplied with four swivel 4" high casters with locks on the 2 front casters

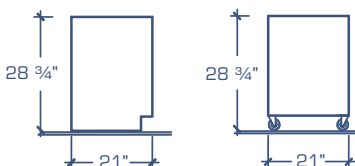
Cabinets come with finished back and finished top

Mobile Corrosive unit - 2 doors



FI-B25-30	30	762
FI-B25-36	36	914
FI-B25-48	48	1219

Corrosive unit - 2 doors



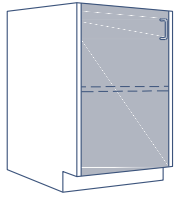
Legend:

- *1 Double pulls on 30" to 48" cabinet sizes
- *2 File drawers supplied with hanger bars and full extension slide arms to fit legal or letter size files
- *3 Full extension drawer slide arms supplied as standard on these cabinets
- *4 Back panels in these cabinets are 9" high



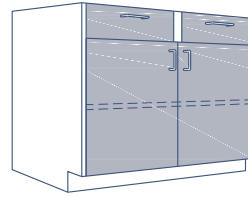
Corrosive Cabinet Signage

BLUE LETTERS



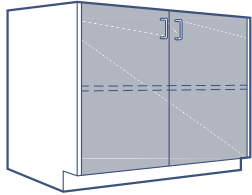
Model no.	Width	
	inches	mm
FI-ADA1-15	15	381
FI-ADA1-18	18	457
FI-ADA1-21	21	533
FI-ADA1-24	24	610

1 door unit



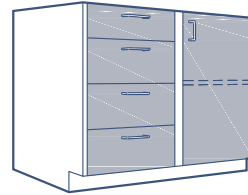
Model no.	Width	
	inches	mm
FI-ADA5-30-2	30	762
FI-ADA5-36-2	36	914
FI-ADA5-42-2	42	1067
FI-ADA5-48-2	48	1219

2 top drawer & 2 door unit



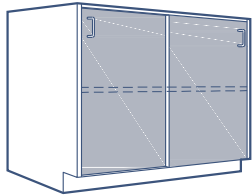
FI-ADA2-30	30	762
FI-ADA2-36	36	914
FI-ADA2-42	42	1067
FI-ADA2-48	48	1219

2 door unit



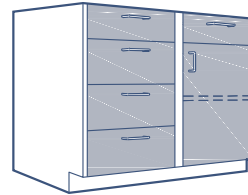
FI-ADA6-30-4	30	762
FI-ADA6-36-4	36	914
FI-ADA6-42-4	42	1067
FI-ADA6-48-4	48	1219

3 drawer, 1 top drawer & 1 door unit



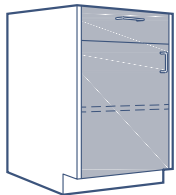
FI-ADA3-30	30	762
FI-ADA3-36	36	914
FI-ADA3-42	42	1067
FI-ADA3-48	48	1219

2 sliding door unit



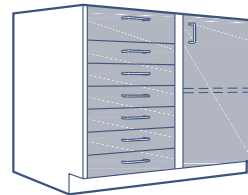
FI-ADA6A-30-5	30	762
FI-ADA6A-36-5	36	914
FI-ADA6A-42-5	42	1067
FI-ADA6A-48-5	48	1219

3 drawer, 2 top drawer & 1 door unit



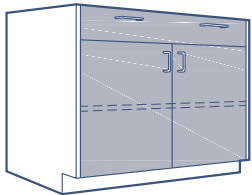
FI-ADA4-15-1	15	381
FI-ADA4-18-1	18	457
FI-ADA4-21-1	21	533
FI-ADA4-24-1	24	610

1 top drawer & 1 door unit



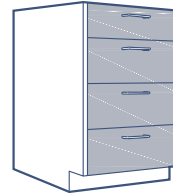
FI-ADA6-30-7	30	762
FI-ADA6-36-7	36	914
FI-ADA6-42-7	42	1067
FI-ADA6-48-7	48	1219

6 drawer, 1 top drawer & 1 door unit



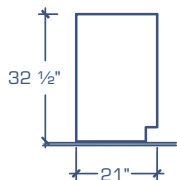
FI-ADA5-30-1	30	762
FI-ADA5-36-1	36	914
FI-ADA5-42-1 *3	42	1067
FI-ADA5-48-1 *3	48	1219

1 top drawer & 2 doors unit



FI-ADA7-15-4	15	381
FI-ADA7-18-4	18	457
FI-ADA7-21-4	21	533
FI-ADA7-24-4	24	610
FI-ADA7-30-4 *1	30	762
FI-ADA7-36-4 *1	36	914
FI-ADA7-42-4 *1 *3	42	1067
FI-ADA7-48-4 *1 *3	48	1219

3 drawer & 1 top drawer unit

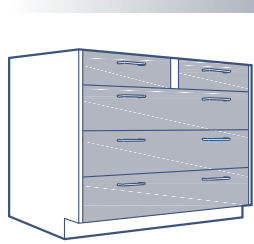


Legend:

- *1 Double pulls on 30" to 48" cabinet sizes
- *2 File drawers supplied with hanger bars and full extension slide arms to fit legal or letter size files
- *3 Full extension drawer slide arms supplied as standard on these cabinets
- *4 Back panels in these cabinets are 9" high

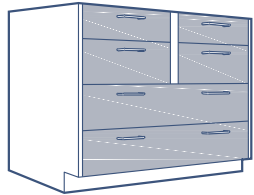
Reverse models are also available by adding "RV" to model number.

ADA Height Base Cabinets



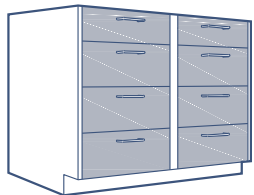
Model no.	Width	
	inches	mm
FI-ADA8-30-5	30	762
FI-ADA8-36-5	36	914
FI-ADA8-42-5 *3	42	1067
FI-ADA8-48-5 *3	48	1219

3 drawer & 2 top drawer unit



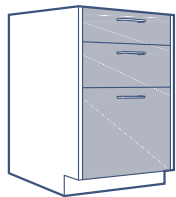
FI-ADA9-30-6	30	762
FI-ADA9-36-6	36	914
FI-ADA9-42-6 *3	42	1067
FI-ADA9-48-6 *3	48	1219

4 drawer & 2 top drawer unit



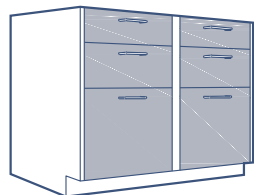
FI-ADA10-30-8	30	762
FI-ADA10-36-8	36	914
FI-ADA10-42-8	42	1067
FI-ADA10-48-8	48	1219

6 drawer & 2 top drawer unit



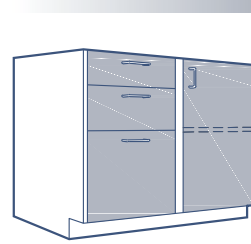
FI-ADA11-15-3 *2	15	381
FI-ADA11-18-3 *2	18	457
FI-ADA11-21-3 *2	21	533
FI-ADA11-24-3 *2	24	610

1 drawer, 1 top drawer & 1 file drawer unit



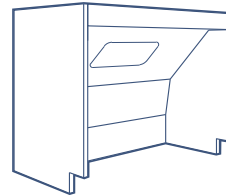
FI-ADA11-30-6 *2	30	762
FI-ADA11-36-6 *2	36	914
FI-ADA11-42-6 *2	42	1067
FI-ADA11-48-6 *2	48	1219

2 drawer, 2 top drawer & 2 file drawer unit



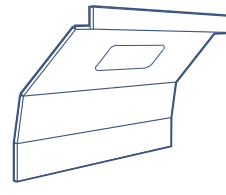
Model no.	Width	
	inches	mm
FI-ADA12-30-3 *2	30	762
FI-ADA12-36-3 *2	36	914
FI-ADA12-42-3 *2	42	1067
FI-ADA12-48-3 *2	48	1219

1 drawer, 1 top drawer, 1 file drawer & 1 door unit



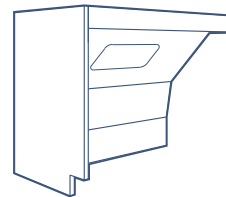
FI-ADA14-30-LR	30	762
FI-ADA14-36-LR	36	914
FI-ADA14-42-LR	42	1067
FI-ADA14-48-LR	48	1219

Knee Space sink unit w/ 2 sides



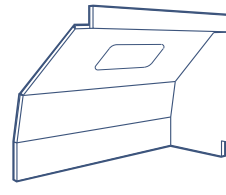
FI-ADA14-30	30	762
FI-ADA14-36	36	914
FI-ADA14-42	42	1067
FI-ADA14-48	48	1219

Knee Space sink unit



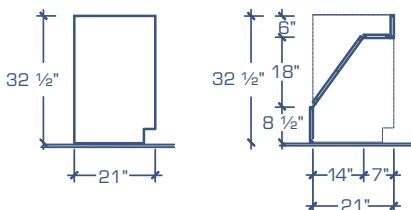
FI-ADA14-30-L	30	762
FI-ADA14-36-L	36	914
FI-ADA14-42-L	42	1067
FI-ADA14-48-L	48	1219

Knee Space sink unit w/ left side



FI-ADA14-30-R	30	762
FI-ADA14-36-R	36	914
FI-ADA14-42-R	42	1067
FI-ADA14-48-R	48	1219

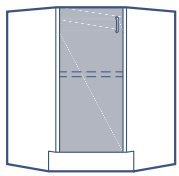
Knee Space sink unit w/ right side



Legend:

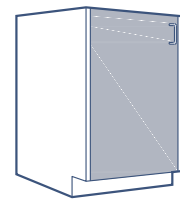
- *1 Double pulls on 30" to 48" cabinet sizes
- *2 File drawers supplied with hanger bars and full extension slide arms to fit legal or letter size files
- *3 Full extension drawer slide arms supplied as standard on these cabinets
- *4 Back panels in these cabinets are 9" high

Reverse models are also available by adding "RV" to model number.



Model no.	Width	
	inches	mm
FI-ADA18-31	14,5	787

45° corner unit



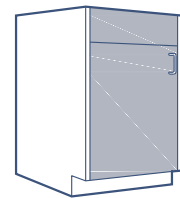
Model no.	Width	
	inches	mm
FI-ADA15-15 *4	15	381
FI-ADA15-18 *4	18	457
FI-ADA15-21 *4	21	533
FI-ADA15-24 *4	24	610

1 door sink unit



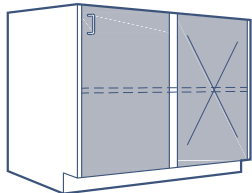
FI-B18S-31 *4	14,5	787
---------------	------	-----

45° corner sink unit



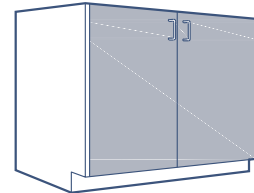
FI-ADA15A-15 *4	15	381
FI-ADA15A-18 *4	18	457
FI-ADA15A-21 *4	21	533
FI-ADA15A-24 *4	24	610

1 door sink unit - false panel above



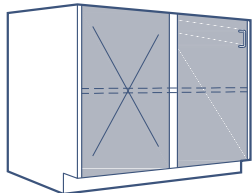
FI-ADA20-30	30	762
FI-ADA20-36	36	914
FI-ADA20-42	42	1067
FI-ADA20-48	48	1219

Corner unit



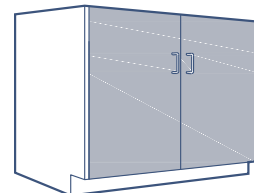
FI-ADA16-30 *4	30	762
FI-ADA16-36 *4	36	914
FI-ADA16-42 *4	42	1067
FI-ADA16-48 *4	48	1219

2 door sink unit



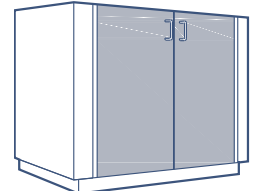
FI-ADA21-30	30	762
FI-ADA21-36	36	914
FI-ADA21-42	42	1067
FI-ADA21-48	48	1219

Corner unit



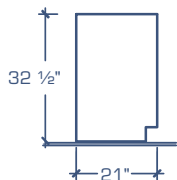
FI-ADA16A-30 *4	30	762
FI-ADA16A-36 *4	36	914
FI-ADA16A-42 *4	42	1067
FI-ADA16A-48 *4	48	1219

2 door sink unit - false panel above



FI-ADA17-52 *4	52	1321
FI-ADA17-58 *4	58	1473

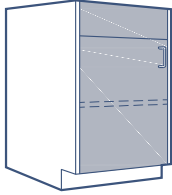
Island end sink unit



Legend:

- *1 Double pulls on 30" to 48" cabinet sizes
- *2 File drawers supplied with hanger bars and full extension slide arms to fit legal or letter size files
- *3 Full extension drawer slide arms supplied as standard on these cabinets
- *4 Back panels in these cabinets are 9" high

ADA Height Base Cabinets

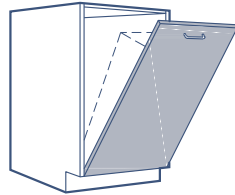


Model no.	Width	
	inches	mm
FI-ADA24-18	18	457
FI-ADA24-24	24	610

Description

- Fixed upper panel for mounting of services.
- This unit is mostly used under fume hoods where services are deck mounted.

Remote control unit - 1 door

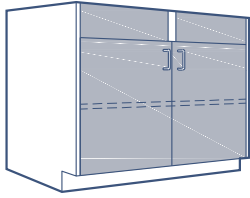


Model no.	Width	
	inches	mm
FI-ADA28-18	18	457
FI-ADA28-24	24	316

Description

- Bins are not included.
- Bins can be supplied by adding the following letters after catalog number:
 - "GB" for galvanized steel;
 - "SB" for stainless steel T.304;
 - "LP" for leak proof.

1 door bin unit



FI-ADA24-30	30	762
FI-ADA24-36	36	914
FI-ADA24-48	48	1219

Description

- Fixed upper panel for mounting of services.
- This unit is mostly used under fume hoods where services are deck mounted.

Remote control unit - 2 doors

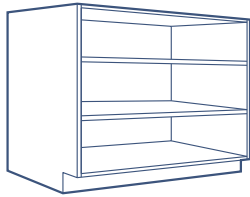


FI-ADA29-36	36	914
FI-ADA29-48	48	1219

Description

- Bins are not included.
- Bins can be supplied by adding the following letters after catalog number:
 - "GB" for galvanized steel;
 - "SB" for stainless steel T.304;
 - "LP" for leak proof.

2 doors bin unit

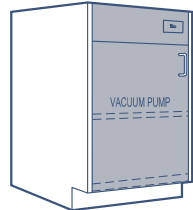


FI-ADA35-15	15	381
FI-ADA35-18	18	457
FI-ADA35-21	21	533
FI-ADA35-24	24	610
FI-ADA35-30	30	762
FI-ADA35-36	36	914
FI-ADA35-42	42	1067
FI-ADA35-48	48	1219

Open unit Description

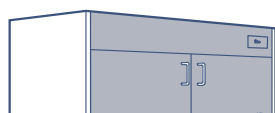
- Two (2) adjustable shelves.

Open unit Description



FI-ADA41-15	15	381
FI-ADA41-18	18	457
FI-ADA41-21	21	533
FI-ADA41-24	24	610

Pump unit, 1 door



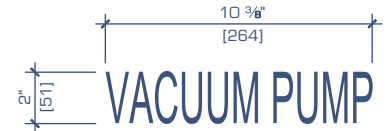
FI-ADA41-30	30	762
FI-ADA41-36	36	914
FI-ADA41-42	42	1067
FI-ADA41-48	48	1219

Pump unit, 2 doors

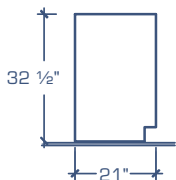
Description

All pump cabinets are supplied with the following:

- Pull out tray located at the bottom of cabinet on 200 lbs capacity full extension tracks
- Prewired duplex 120V/20A plug inside cabinet with power switch located on front apron and wired to a junction box located at the rear of the cabinet (access panel from inside the cabinet)
- Double wall perforated interior cabinet sides, back and top with sound insulation
- Unit can be supplied with "Silk screen" signage by adding "SC" after model number

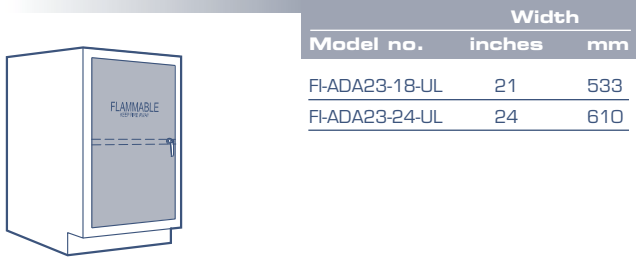


Pump Cabinet Signage
BLACK LETTERS

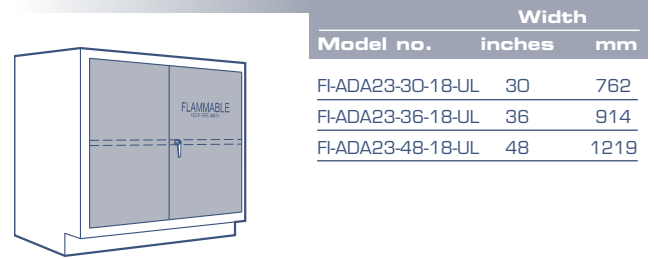


Legend:

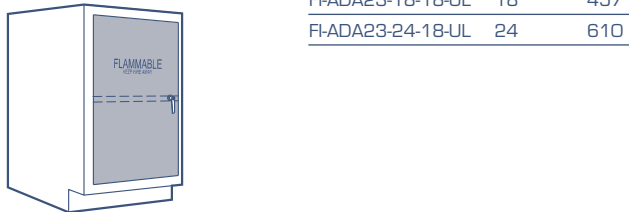
- *1 Double pulls on 30" to 48" cabinet sizes
- *2 File drawers supplied with hanger bars and full extension slide arms to fit legal or letter size files
- *3 Full extension drawer slide arms supplied as standard on these cabinets
- *4 Back panels in these cabinets are 9" high



Flammable unit - 1 door



Flammable unit 18" deep - 2 doors

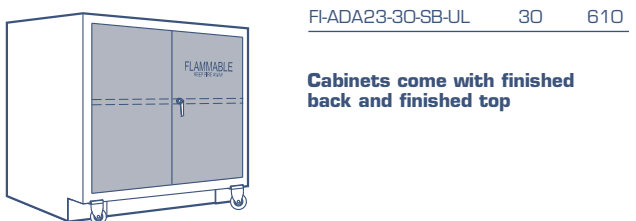


Flammable unit 18" deep - 1 door



Cabinets come with finished back and finished top

Mobile Flammable unit - 1 door

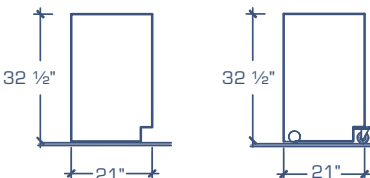


Cabinets come with finished back and finished top

Mobile Flammable unit - 2 doors



Flammable unit - 2 doors



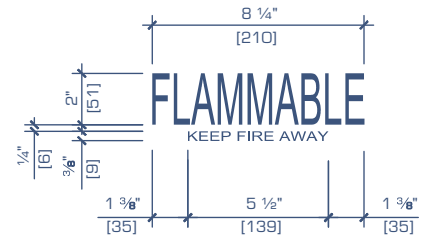
Self closing door(s) option available by adding « AC » to model number.

Description

For all flammable cabinets shown on this page:

- Solvent storage units meet O.S.H.A. standards and comply with N.F.P.A. code no 30 for flammable and combustible liquids
- Two fire baffle vents are located in back of unit.
- Door is hinged with a continuous painted steel hinge
- Recessed base to match standard base cabinets.
- One galvanized steel shelf adjustable on 2" increment
- Galvanized liquid proof bottom pan 2" deep
- Three point locking handle
- Standard safety yellow exterior color
- Unit can be supplied with "Silk screen" signage by adding "SC" after model number

Listed by Intertek to UL1275 and UL1275C



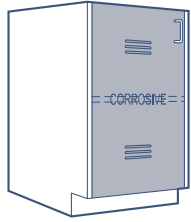
Flammable Cabinet Signage

RED LETTERS

Legend:

- *1 Double pulls on 30" to 48" cabinet sizes
- *2 File drawers supplied with hanger bars and full extension slide arms to fit legal or letter size files
- *3 Full extension drawer slide arms supplied as standard on these cabinets
- *4 Back panels in these cabinets are 9" high

ADA Height Corrosive Cabinets



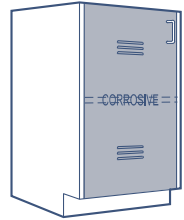
Model no.	Width	
	inches	mm
FI-ADA25-18	18	457
FI-ADA25-24	24	610

Description

For all corrosive cabinets shown on this page

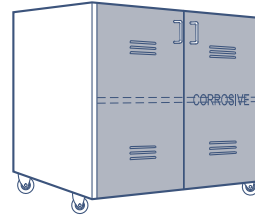
- Unit is lined with a chemically resistant molded polypropylene liner with an adjustable 2-positions HDPE shelf the full depth and width of the cabinet.
- Unit can be vented into fume hood by adding "V" after model number
- Unit can be supplied with "Silk screen" signage by adding "SC" after model number

Corrosive unit - 1 door



FI-ADA25-18-18	18	457
FI-ADA25-24-18	24	610

Corrosive unit 18" deep - 1 door



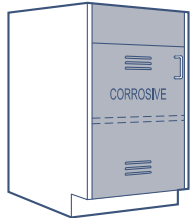
FI-ADA25-30-SS	30	610
----------------	----	-----

Description

- Unit is supplied with four swivel 4" high casters with locks on the 2 front casters

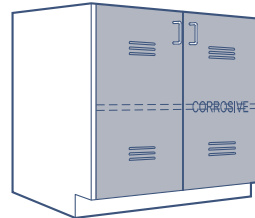
Cabinets come with finished back and finished top

Mobile Corrosive unit - 2 doors



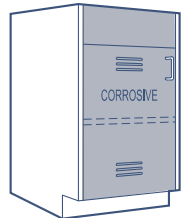
FI-ADA26-18	18	457
FI-ADA26-24	24	610

Corrosive unit - 1 door, false panel above



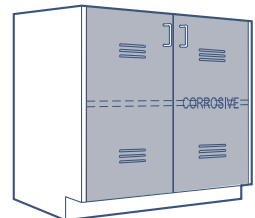
FI-ADA25-30	30	762
FI-ADA25-36	36	914
FI-ADA25-48	48	1219

Corrosive unit - 2 doors



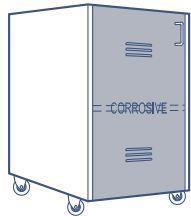
FI-ADA26-18-18	18	457
FI-ADA26-24-18	24	610

Corrosive unit 18" deep - 1 door, false panel above



FI-ADA25-30-18	30	762
FI-ADA25-36-18	36	914
FI-ADA25-48-18	48	1219

Corrosive unit 18" deep - 2 doors



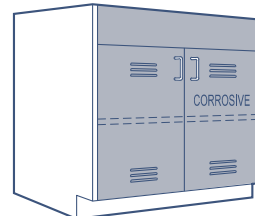
FI-ADA25-24-SS	24	533
----------------	----	-----

Description

- Unit is supplied with four swivel 4" high casters with locks on the 2 front casters

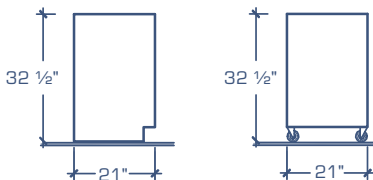
Cabinets come with finished back and finished top

Mobile Corrosive unit - 1 door



FI-ADA26-30	30	762
FI-ADA26-36	36	914
FI-ADA26-48	48	1219

Corrosive unit - 2 doors, false panel above



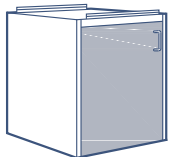
Legend:

- *1 Double pulls on 30" to 48" cabinet sizes
- *2 File drawers supplied with hanger bars and full extension slide arms to fit legal or letter size files
- *3 Full extension drawer slide arms supplied as standard on these cabinets
- *4 Back panels in these cabinets are 9" high



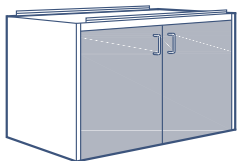
Corrosive Cabinet Signage

BLUE LETTERS



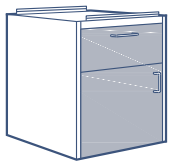
Model no.	Width	
	inches	mm
FI-OB1-15	15	381
FI-OB1-18	18	457
FI-OB1-21	21	533
FI-OB1-24	24	610

Suspended 1 Hinged Door unit



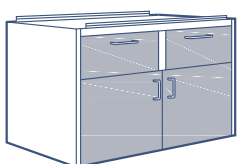
FI-OB2-30	30	762
FI-OB2-36	36	914
FI-OB2-42	42	1067
FI-OB2-48	48	1219

Suspended 2 Hinged Door unit



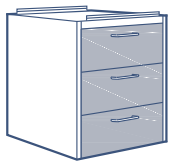
FI-OB4-15-1 *2	15	381
FI-OB4-18-1 *2	18	457
FI-OB4-21-1 *2	21	533
FI-OB4-24-1 *2	24	610

Suspended 1 Drawer & 1 Hinged Door unit




FI-OB5-30-2	30	762
FI-OB5-36-2	36	914
FI-OB5-42-2	42	1067
FI-OB5-48-2	48	1219

Suspended 2 Drawer & 2 Hinged Door unit



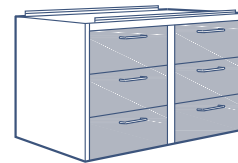
FI-OB7-15-3	15	381
FI-OB7-18-3	18	457
FI-OB7-21-3	21	533
FI-OB7-24-3	24	610
FI-OB7-30-3	30	762
FI-OB7-36-3	36	914
FI-OB7-42-3	42	1067
FI-OB7-48-3	48	1219

Suspended 3 Drawer unit



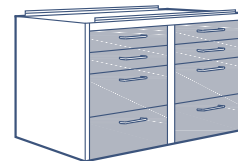
FI-OB7-15-4	15	381
FI-OB7-18-4	18	457
FI-OB7-21-4	21	533
FI-OB7-24-4	24	610
FI-OB7-30-4	30	762
FI-OB7-36-4	36	914
FI-OB7-42-4	42	1067
FI-OB7-48-4	48	1219

Suspended 2 Half Drawer & 2 Drawer unit



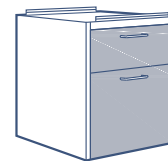
Model no.	Width	
	inches	mm
FI-OB10-30-6	30	762
FI-OB10-36-6	36	914
FI-OB10-42-6	42	1067
FI-OB10-48-6	48	1219

Suspended 6 Drawer unit



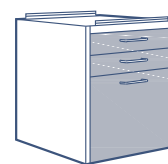
FI-OB10-30-8	30	762
FI-OB10-36-8	36	914
FI-OB10-42-8	42	1067
FI-OB10-48-8	48	1219

Suspended 4 Half Drawer & 4 Regular Drawer unit



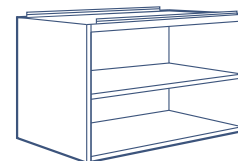
FI-OB11-15-2 *2	15	381
FI-OB11-18-2 *2	18	457
FI-OB11-21-2 *2	21	533
FI-OB11-24-2 *2	24	610

Suspended 1 Drawer & 1 File Drawer unit



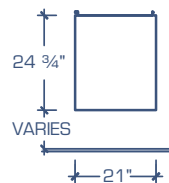
FI-OB11-15-3 *2	15	381
FI-OB11-18-3 *2	18	457
FI-OB11-21-3 *2	21	533
FI-OB11-24-3 *2	24	610

Suspended 2 Half Drawer & 1 File Drawer unit



FI-OB35-15	15	381
FI-OB35-18	18	457
FI-OB35-21	21	533
FI-OB35-24	24	610
FI-OB35-30	30	762
FI-OB35-36	36	914
FI-OB35-42	42	1067
FI-OB35-48	48	1219

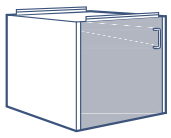
Suspended Open unit



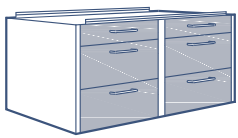
Legend:

- *1 Double pulls on 30" to 48" cabinet sizes
- *2 File drawers supplied with hanger bars and full extension slide arms to fit legal or letter size files
- *3 Full extension drawer slide arms supplied as standard on these cabinets
- *4 Back panels in these cabinets are 9" high

19 3/8" Hight Suspended Cabinets



Model no.	Width	
	inches	mm
FI-OC1-15	15	381
FI-OC1-18	18	457
FI-OC1-21	21	533
FI-OC1-24	24	610



Model no.	Width	
	inches	mm
FI-OC10-30-6	30	762
FI-OC10-36-6	36	914
FI-OC10-42-6	42	1067
FI-OC10-48-6	48	1219

Suspended 1 Hinged Door unit



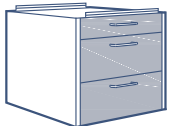
FI-OC2-30	30	762
FI-OC2-36	36	914
FI-OC2-42	42	1067
FI-OC2-48	48	1219

Suspended 2 Half Drawer & 4 Drawer unit



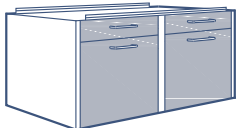
FI-OC11-15-2 *2	15	381
FI-OC11-18-2 *2	18	457
FI-OC11-21-2 *2	21	533
FI-OC11-24-2 *2	24	610

Suspended 2 Hinged Door unit



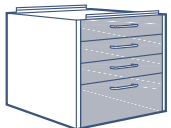
FI-OC7-15-3	15	381
FI-OC7-18-3	18	457
FI-OC7-21-3	21	533
FI-OC7-24-3	24	610

Suspended 1 Half Drawer + 1 File Drawer unit



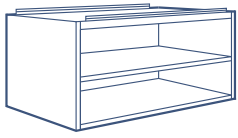
FI-OC11-30-4 *2	30	762
FI-OC11-36-4 *2	36	914
FI-OC11-42-4 *2	42	1067
FI-OC11-48-4 *2	48	1219

Suspended 1 Half Drawer & 2 Drawer unit



FI-C07-15-4	15	381
FI-C07-18-4	18	457
FI-C07-21-4	21	533
FI-C07-24-4	24	610

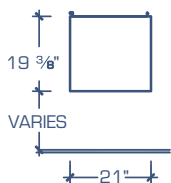
Suspended 2 Half Drawer + 2 File Drawer unit



FI-OC35-15	15	381
FI-OC35-18	18	457
FI-OC35-21	21	533
FI-OC35-24	24	610
FI-OC35-30	30	762
FI-OC35-36	36	914
FI-OC35-42	42	1067
FI-OC35-48	48	1219

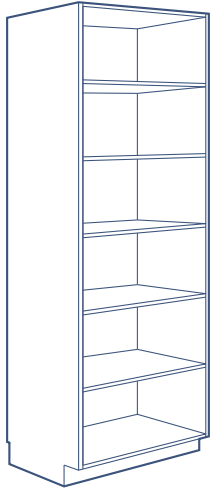
Suspended 3 Half Drawer & 1 Drawer unit

Suspended Open unit



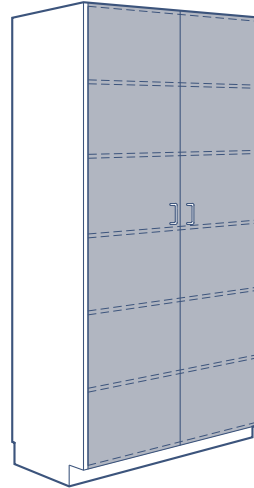
Legend:

- *1 Double pulls on 30" to 48" cabinet sizes
- *2 File drawers supplied with hanger bars and full extension slide arms to fit legal or letter size files
- *3 Full extension drawer slide arms supplied as standard on these cabinets
- *4 Back panels in these cabinets are 9" high



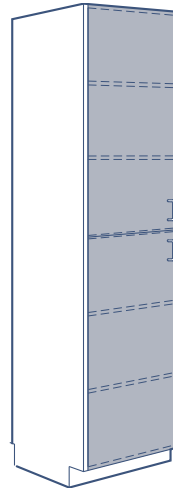
Open shelf tall cabinet

Model no.	Width	
	inches	mm
FI-85-15-14	15	381
FI-85-18-14	18	457
FI-85-21-14	21	533
FI-85-24-14	24	610
FI-85-30-14	30	762
FI-85-36-14	36	914
FI-85-42-14	42	1067
FI-85-48-14	48	1219
FI-85-15-18	15	381
FI-85-18-18	18	457
FI-85-21-18	21	533
FI-85-24-18	24	610
FI-85-30-18	30	762
FI-85-36-18	36	914
FI-85-42-18	42	1067
FI-85-48-18	48	1219
FI-85-15-22	15	381
FI-85-18-22	18	457
FI-85-21-22	21	533
FI-85-24-22	24	610
FI-85-30-22	30	762
FI-85-36-22	36	914
FI-85-42-22	42	1067
FI-85-48-22	48	1219



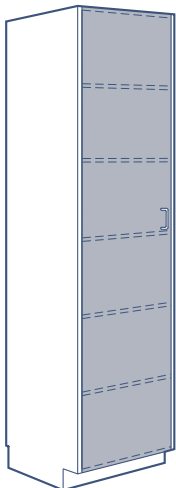
Model no.	Width	
	inches	mm
FI-86-30-14	30	762
FI-86-36-14	36	914
FI-86-42-14	42	1067
FI-86-48-14	48	1219
FI-86-30-18	30	762
FI-86-36-18	36	914
FI-86-42-18	42	1067
FI-86-48-18	48	1219
FI-86-30-22	30	762
FI-86-36-22	36	914
FI-86-42-22	42	1067
FI-86-48-22	48	1219

2 hinged door tall cabinet



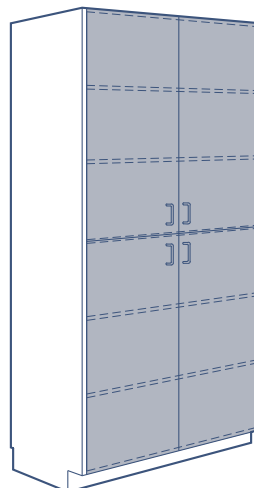
FI-86A-15-14	15	381
FI-86A-18-14	18	457
FI-86A-21-14	21	533
FI-86A-24-14	24	610
FI-86A-15-18	15	381
FI-86A-18-18	18	457
FI-86A-21-18	21	533
FI-86A-24-18	24	610
FI-86A-15-22	15	381
FI-86A-18-22	18	457
FI-86A-21-22	21	533
FI-86A-24-22	24	610

2 hinged door tall cabinet



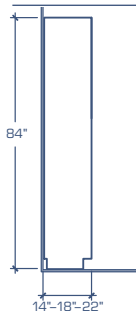
FI-86-15-14	15	381
FI-86-18-14	18	457
FI-86-21-14	21	533
FI-86-24-14	24	610
FI-86-15-18	15	381
FI-86-18-18	18	457
FI-86-21-18	21	533
FI-86-24-18	24	610
FI-86-15-22	15	381
FI-86-18-22	18	457
FI-86-21-22	21	533
FI-86-24-22	24	610

1 hinged door tall cabinet



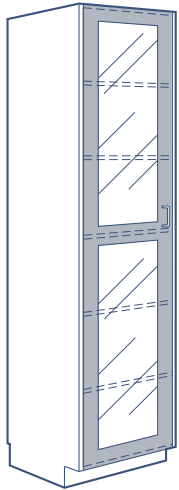
FI-86A-30-14	30	762
FI-86A-36-14	36	914
FI-86A-42-14	42	1067
FI-86A-48-14	48	1219
FI-86A-30-18	30	762
FI-86A-36-18	36	914
FI-86A-42-18	42	1067
FI-86A-48-18	48	1219
FI-86A-30-22	30	762
FI-86A-36-22	36	914
FI-86A-42-22	42	1067
FI-86A-48-22	48	1219

4 hinged door tall cabinet



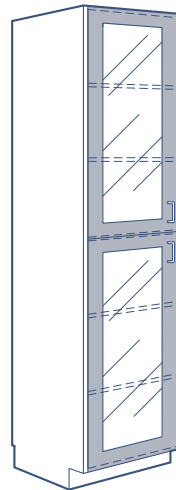
Tall cabinet available depths of 14", 18" and 22"

84" High Tall Cabinets



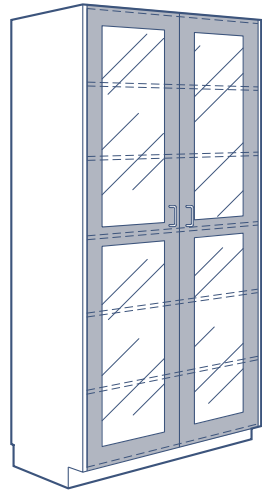
Model no.	Width	
	inches	mm
FI-87-15-14	15	381
FI-87-18-14	18	457
FI-87-21-14	21	533
FI-87-24-14	24	610
FI-87-15-18	15	381
FI-87-18-18	18	457
FI-87-21-18	21	533
FI-87-24-18	24	610
FI-87-15-22	15	381
FI-87-18-22	18	457
FI-87-21-22	21	533
FI-87-24-22	24	610

1 glazed hinged door tall cabinet



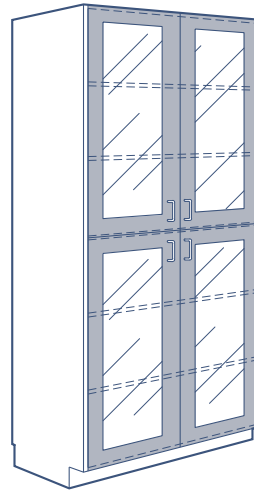
Model no.	Width	
	inches	mm
FI-87A-15-14	15	381
FI-87A-18-14	18	457
FI-87A-21-14	21	533
FI-87A-24-14	24	610
FI-87A-15-18	15	381
FI-87A-18-18	18	457
FI-87A-21-18	21	533
FI-87A-24-18	24	610
FI-87A-15-22	15	381
FI-87A-18-22	18	457
FI-87A-21-22	21	533
FI-87A-24-22	24	610

2 glazed hinged door tall cabinet



FI-87-30-14	30	762
FI-87-36-14	36	914
FI-87-42-14	42	1067
FI-87-48-14	48	1219
FI-87-30-18	30	762
FI-87-36-18	36	914
FI-87-42-18	42	1067
FI-87-48-18	48	1219
FI-87-30-22	30	762
FI-87-36-22	36	914
FI-87-42-22	42	1067
FI-87-48-22	48	1219

2 glazed hinged door tall cabinet

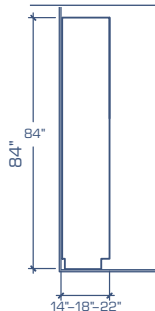


FI-87A-30-14	30	762
FI-87A-36-14	36	914
FI-87A-42-14	42	1067
FI-87A-48-14	48	1219
FI-87A-30-18	30	762
FI-87A-36-18	36	914
FI-87A-42-18	42	1067
FI-87A-48-18	48	1219
FI-87A-30-22	30	762
FI-87A-36-22	36	914
FI-87A-42-22	42	1067
FI-87A-48-22	48	1219

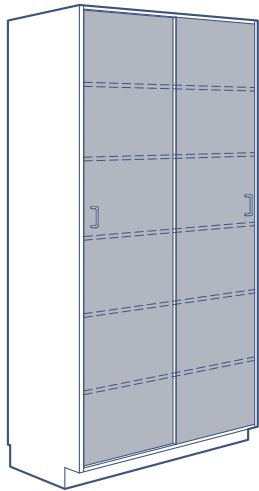
4 glazed hinged door tall cabinet

Description

- Framed glass doors are supplied using 3 mm float glass

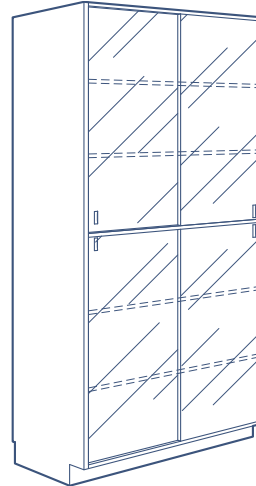


Tall cabinet: available depths of 14", 18" and 22"



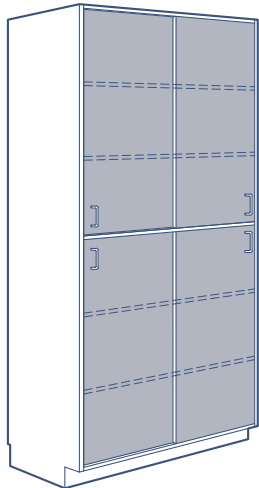
Model no.	Width	
	inches	mm
FI-88-30-14	30	762
FI-88-36-14	36	914
FI-88-42-14	42	1067
FI-88-48-14	48	1219
FI-88-30-18	30	762
FI-88-36-18	36	914
FI-88-42-18	42	1067
FI-88-48-18	48	1219
FI-88-30-22	30	762
FI-88-36-22	36	914
FI-88-42-22	42	1067
FI-88-48-22	48	1219

2 sliding door tall cabinet



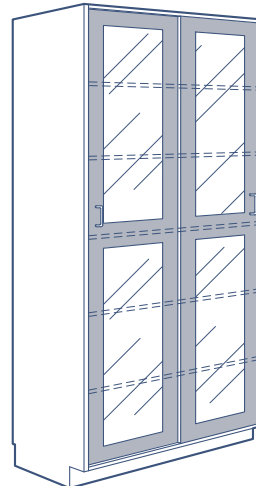
Model no.	Width	
	inches	mm
FI-89-30-14	30	762
FI-89-36-14	36	914
FI-89-42-14	42	1067
FI-89-48-14	48	1219
FI-89-30-18	30	762
FI-89-36-18	36	914
FI-89-42-18	42	1067
FI-89-48-18	48	1219
FI-89-30-22	30	762
FI-89-36-22	36	914
FI-89-42-22	42	1067
FI-89-48-22	48	1219

4 glass sliding door tall cabinet



FI-88A-30-14	30	762
FI-88A-36-14	36	914
FI-88A-42-14	42	1067
FI-88A-48-14	48	1219
FI-88A-30-18	30	762
FI-88A-36-18	36	914
FI-88A-42-18	42	1067
FI-88A-48-18	48	1219
FI-88A-30-22	30	762
FI-88A-36-22	36	914
FI-88A-42-22	42	1067
FI-88A-48-22	48	1219

4 sliding door tall cabinet

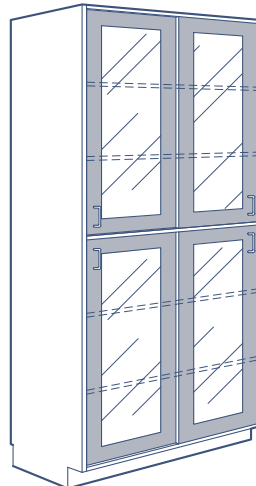


FI-90-30-14	30	762
FI-90-36-14	36	914
FI-90-42-14	42	1067
FI-90-48-14	48	1219
FI-90-30-18	30	762
FI-90-36-18	36	914
FI-90-42-18	42	1067
FI-90-48-18	48	1219
FI-90-30-22	30	762
FI-90-36-22	36	914
FI-90-42-22	42	1067
FI-90-48-22	48	1219

2 glazed sliding door tall cabinet

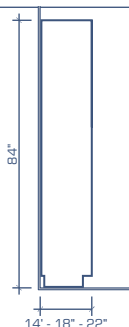
Description

- Unframed glass sliding doors are supplied using 5 mm float glass with finger grooves
- Framed glass doors are supplied using 3 mm float glass



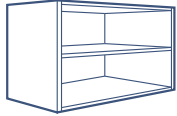
FI-90A-30-14	30	762
FI-90A-36-14	36	914
FI-90A-42-14	42	1067
FI-90A-48-14	48	1219
FI-90A-30-18	30	762
FI-90A-36-18	36	914
FI-90A-42-18	42	1067
FI-90A-48-18	48	1219
FI-90A-30-22	30	762
FI-90A-36-22	36	914
FI-90A-42-22	42	1067
FI-90A-48-22	48	1219

4 glazed sliding door tall cabinet



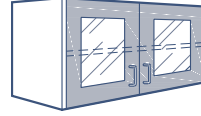
Tall cabinet available depths of 14", 18" and 22"

24" High Wall Cabinets



Model no.	Width	
	inches	mm
FI-40-15-14	15	381
FI-40-18-14	18	457
FI-40-21-14	21	533
FI-40-24-14	24	610
FI-40-30-14	30	762
FI-40-36-14	36	914
FI-40-42-14	42	1067
FI-40-48-14	48	1219
FI-40-15-18	15	381
FI-40-18-18	18	457
FI-40-21-18	21	533
FI-40-24-18	24	610
FI-40-30-18	30	762
FI-40-36-18	36	914
FI-40-42-18	42	1067
FI-40-48-18	48	1219

Open shelf unit



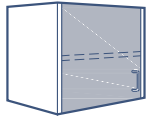
Model no.	Width	
	inches	mm
FI-44-30-14	30	762
FI-44-36-14	36	914
FI-44-42-14	42	1067
FI-44-48-14	48	1219
FI-44-30-18	30	762
FI-44-36-18	36	914
FI-44-42-18	42	1067
FI-44-48-18	48	1219

2 glazed hinged door unit



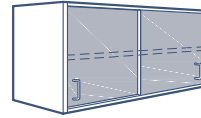
FI-45-30-14	30	762
FI-45-36-14	36	914
FI-45-42-14	42	1067
FI-45-48-14	48	1219
FI-45-30-18	30	762
FI-45-36-18	36	914
FI-45-42-18	42	1067
FI-45-48-18	48	1219

2 glass sliding door unit



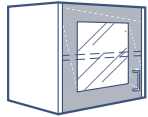
FI-41-15-14	15	381
FI-41-18-14	18	457
FI-41-21-14	21	533
FI-41-24-14	24	610
FI-41-15-18	15	381
FI-41-18-18	18	457
FI-41-21-18	21	533
FI-41-24-18	24	610

1 hinged door unit



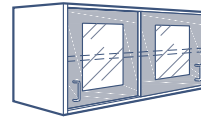
FI-46-30-14	30	762
FI-46-36-14	36	914
FI-46-42-14	42	1067
FI-46-48-14	48	1219
FI-46-30-18	30	762
FI-46-36-18	36	914
FI-46-42-18	42	1067
FI-46-48-18	48	1219

2 solid sliding door unit



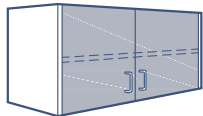
FI-42-15-14	15	381
FI-42-18-14	18	457
FI-42-21-14	21	533
FI-42-24-14	24	610
FI-42-15-18	15	381
FI-42-18-18	18	457
FI-42-21-18	21	533
FI-42-24-18	24	610

1 glazed hinged door unit



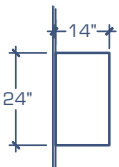
FI-47-30-14	30	762
FI-47-36-14	36	914
FI-47-42-14	42	1067
FI-47-48-14	48	1219
FI-47-30-18	30	762
FI-47-36-18	36	914
FI-47-42-18	42	1067
FI-47-48-18	48	1219

2 glazed sliding door unit

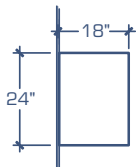


FI-43-30-14	30	762
FI-43-36-14	36	914
FI-43-42-14	42	1067
FI-43-48-14	48	1219
FI-43-30-18	30	762
FI-43-36-18	36	914
FI-43-42-18	42	1067
FI-43-48-18	48	1219

2 hinged door unit



14" depth units

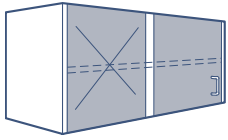


18" depth units

Reverse models are also available by adding "RV" to model number.

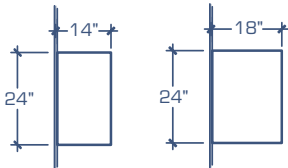
Description

- Unframed glass sliding doors are supplied using 5 mm float glass with finger grooves
- Framed glass doors are supplied using 3 mm float glass



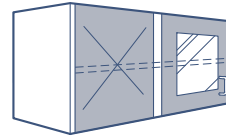
Model no.	Width	
	inches	mm
FI-10-30-14	30	762
FI-10-36-14	36	914
FI-10-42-14	42	1067
FI-10-48-14	48	1219
FI-10-30-18	30	762
FI-10-36-18	36	914
FI-10-42-18	42	1067
FI-10-48-18	48	1219

Corner unit with door



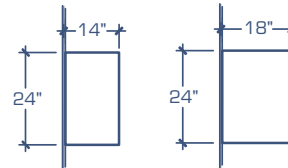
14" depth units 18" depth units

Reverse models are also available by adding "RV" to model number.



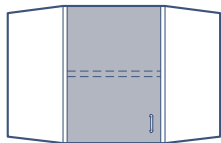
Model no.	Width	
	inches	mm
FI-20-30-14	30	762
FI-20-36-14	36	914
FI-20-42-14	42	1067
FI-20-48-14	48	1219
FI-20-30-18	30	762
FI-20-36-18	36	914
FI-20-42-18	42	1067
FI-20-48-18	48	1219

Corner unit with glazed door



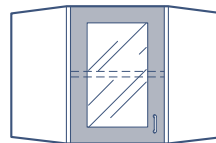
14" depth units 18" depth units

Reverse models are also available by adding "RV" to model number.



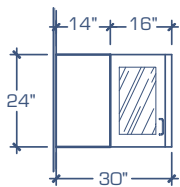
FI-15-14-14	14	365
FI-15-18-18	18	457

45° corner unit with door

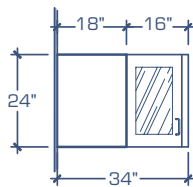


FI-25-14-14	14	365
FI-25-18-18	18	457

45° corner unit with glazed door



14" depth units

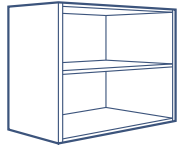


18" depth units

Description

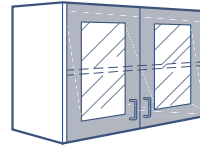
- Framed glass doors are supplied using 3 mm float glass

30" High Wall Cabinets



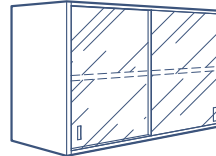
Open shelf unit

Model no.	Width	
	inches	mm
FI-54-15-14	15	381
FI-54-18-14	18	457
FI-54-21-14	21	533
FI-54-24-14	24	610
FI-54-30-14	30	762
FI-54-36-14	36	914
FI-54-42-14	42	1067
FI-54-48-14	48	1219
FI-54-15-18	15	381
FI-54-18-18	18	457
FI-54-21-18	21	533
FI-54-24-18	24	610
FI-54-30-18	30	762
FI-54-36-18	36	914
FI-54-42-18	42	1067
FI-54-48-18	48	1219



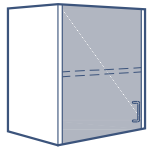
2 glazed hinged door unit

Model no.	Width	
	inches	mm
FI-58-30-14	30	762
FI-58-36-14	36	914
FI-58-42-14	42	1067
FI-58-48-14	48	1219
FI-58-30-18	30	762
FI-58-36-18	36	914
FI-58-42-18	42	1067
FI-58-48-18	48	1219



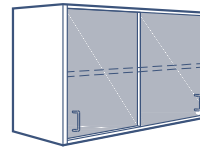
2 glass sliding door unit

FI-59-30-14	30	762
FI-59-36-14	36	914
FI-59-42-14	42	1067
FI-59-48-14	48	1219
FI-59-30-18	30	762
FI-59-36-18	36	914
FI-59-42-18	42	1067
FI-59-48-18	48	1219



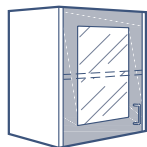
1 hinged door unit

FI-55-15-14	15	381
FI-55-18-14	18	457
FI-55-21-14	21	533
FI-55-24-14	24	610
FI-55-15-18	15	381
FI-55-18-18	18	457
FI-55-21-18	21	533
FI-55-24-18	24	610



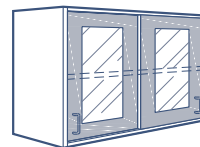
2 solid sliding door unit

FI-60-30-14	30	762
FI-60-36-14	36	914
FI-60-42-14	42	1067
FI-60-48-14	48	1219
FI-60-30-18	30	762
FI-60-36-18	36	914
FI-60-42-18	42	1067
FI-60-48-18	48	1219



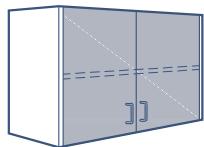
1 glazed hinged door unit

FI-56-15-14	15	381
FI-56-18-14	18	457
FI-56-21-14	21	533
FI-56-24-14	24	610
FI-56-15-18	15	381
FI-56-18-18	18	457
FI-56-21-18	21	533
FI-56-24-18	24	610



2 glazed sliding door unit

FI-61-30-14	30	762
FI-61-36-14	36	914
FI-61-42-14	42	1067
FI-61-48-14	48	1219
FI-61-30-18	30	762
FI-61-36-18	36	914
FI-61-42-18	42	1067
FI-61-48-18	48	1219

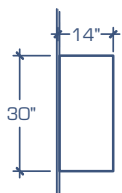


2 hinged door unit

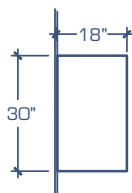
FI-57-30-14	30	762
FI-57-36-14	36	914
FI-57-42-14	42	1067
FI-57-48-14	48	1219
FI-57-30-18	30	762
FI-57-36-18	36	914
FI-57-42-18	42	1067
FI-57-48-18	48	1219

Description

- Unframed glass sliding doors are supplied using 5 mm float glass with finger grooves
- Framed glass doors are supplied using 3 mm float glass

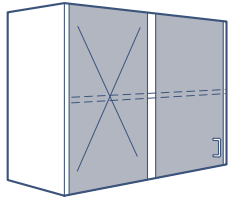


14" depth units



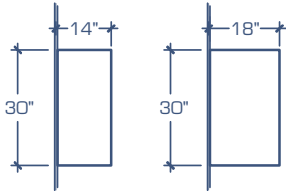
18" depth units

Reverse models are also available by adding "RV" to model number.



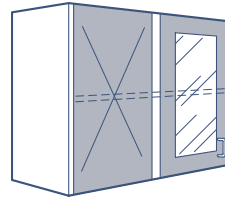
Model no.	Width	
	inches	mm
FI-11-30-14	30	762
FI-11-36-14	36	914
FI-11-42-14	42	1067
FI-11-48-14	48	1219
FI-11-30-18	30	762
FI-11-36-18	36	914
FI-11-42-18	42	1067
FI-11-48-18	48	1219

Corner unit with door



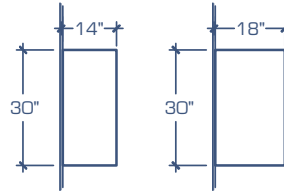
14" depth units 18" depth units

Reverse models are also available by adding "RV" to model number.



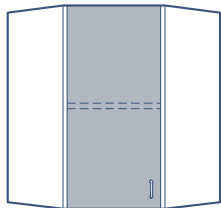
Model no.	Width	
	inches	mm
FI-21-30-14	30	762
FI-21-36-14	36	914
FI-21-42-14	42	1067
FI-21-48-14	48	1219
FI-21-30-18	30	762
FI-21-36-18	36	914
FI-21-42-18	42	1067
FI-21-48-18	48	1219

Corner unit with glazed door



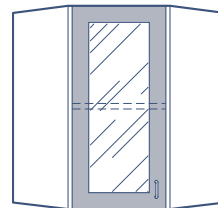
14" depth units 18" depth units

Reverse models are also available by adding "RV" to model number.



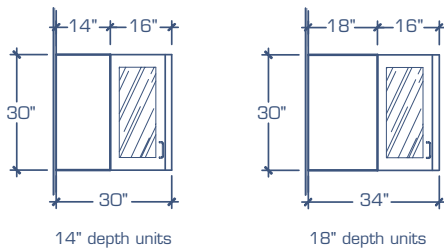
FI-16-14-14	14	365
FI-16-18-18	18	457

45° corner unit with door



FI-26-14-14	14	365
FI-26-18-18	18	457

45° corner unit with glazed door



14" depth units

18" depth units

Description

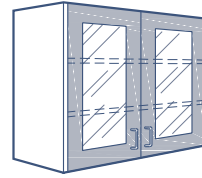
- Framed glass doors are supplied using 3 mm float glass

36" High Wall Cabinets



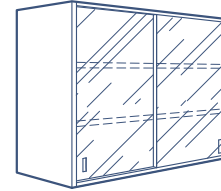
Open shelf unit

Model no.	Width	
	inches	mm
FI-63-15-14	15	381
FI-63-18-14	18	457
FI-63-21-14	21	533
FI-63-24-14	24	610
FI-63-30-14	30	762
FI-63-36-14	36	914
FI-63-42-14	42	1067
FI-63-48-14	48	1219
FI-63-15-18	15	381
FI-63-18-18	18	457
FI-63-21-18	21	533
FI-63-24-18	24	610
FI-63-30-18	30	762
FI-63-36-18	36	914
FI-63-42-18	42	1067
FI-63-48-18	48	1219



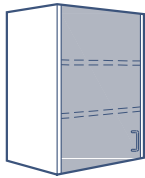
2 glazed hinged door unit

Model no.	Width	
	inches	mm
FI-67-30-14	30	762
FI-67-36-14	36	914
FI-67-42-14	42	1067
FI-67-48-14	48	1219
FI-67-30-18	30	762
FI-67-36-18	36	914
FI-67-42-18	42	1067
FI-67-48-18	48	1219



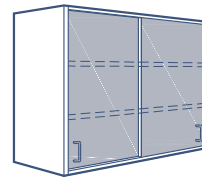
2 glass sliding door unit

FI-68-30-14	30	762
FI-68-36-14	36	914
FI-68-42-14	42	1067
FI-68-48-14	48	1219
FI-68-30-18	30	762
FI-68-36-18	36	914
FI-68-42-18	42	1067
FI-68-48-18	48	1219



1 hinged door unit

FI-64-15-14	15	381
FI-64-18-14	18	457
FI-64-21-14	21	533
FI-64-24-14	24	610
FI-64-15-18	15	381
FI-64-18-18	18	457
FI-64-21-18	21	533
FI-64-24-18	24	610



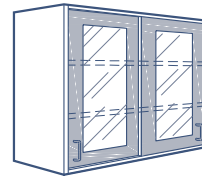
2 sliding door unit

FI-69-30-14	30	762
FI-69-36-14	36	914
FI-69-42-14	42	1067
FI-69-48-14	48	1219
FI-69-30-18	30	762
FI-69-36-18	36	914
FI-69-42-18	42	1067
FI-69-48-18	48	1219



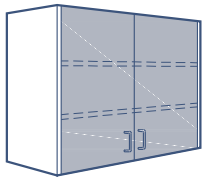
1 glazed hinged door unit

FI-65-15-14	15	381
FI-65-18-14	18	457
FI-65-21-14	21	533
FI-65-24-14	24	610
FI-65-15-18	15	381
FI-65-18-18	18	457
FI-65-21-18	21	533
FI-65-24-18	24	610



2 glazed sliding door unit

FI-70-30-14	30	762
FI-70-36-14	36	914
FI-70-42-14	42	1067
FI-70-48-14	48	1219
FI-70-30-18	30	762
FI-70-36-18	36	914
FI-70-42-18	42	1067
FI-70-48-18	48	1219

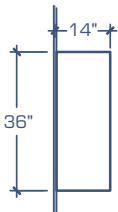


2 solid hinged door unit

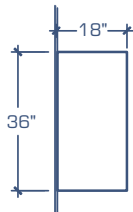
FI-66-30-14	30	762
FI-66-36-14	36	914
FI-66-42-14	42	1067
FI-66-48-14	48	1219
FI-66-30-18	30	762
FI-66-36-18	36	914
FI-66-42-18	42	1067
FI-66-48-18	48	1219

Description

- Unframed glass sliding doors are supplied using 5 mm float glass with finger grooves
- Framed glass doors are supplied using 3 mm float glass

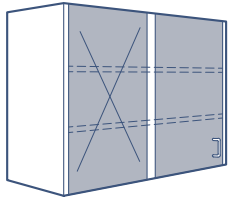


14" depth units



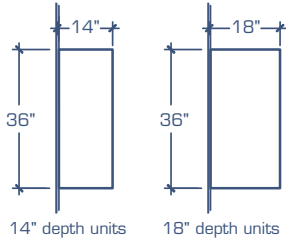
18" depth units

Reverse models are also available by adding "RV" to model number.

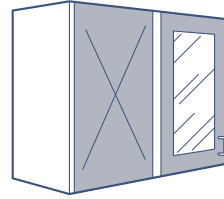


Model no.	Width	
	inches	mm
FI-12-30-14	30	762
FI-12-36-14	36	914
FI-12-42-14	42	1067
FI-12-48-14	48	1219
FI-12-30-18	30	762
FI-12-36-18	36	914
FI-12-42-18	42	1067
FI-12-48-18	48	1219

Corner unit with door

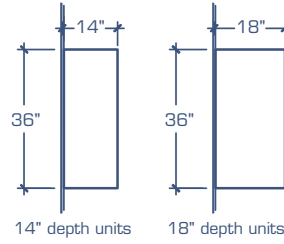


Reverse models are also available by adding "RV" to model number.

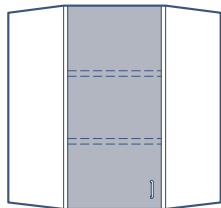


Model no.	Width	
	inches	mm
FI-22-30-14	30	762
FI-22-36-14	36	914
FI-22-42-14	42	1067
FI-22-48-14	48	1219
FI-22-30-18	30	762
FI-22-36-18	36	914
FI-22-42-18	42	1067
FI-22-48-18	48	1219

Corner unit with glazed door

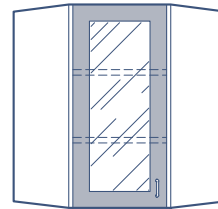


Reverse models are also available by adding "RV" to model number.



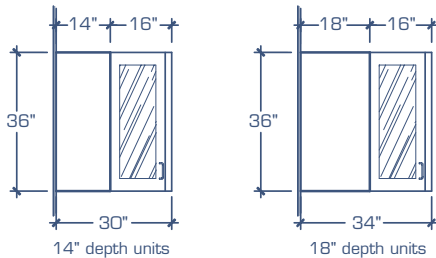
FI-17-14-14	14	365
FI-17-18-18	18	457

45° corner unit with door



FI-27-14-14	14	365
FI-27-18-18	18	457

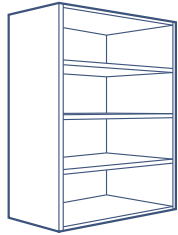
45° corner unit with glazed door



Description

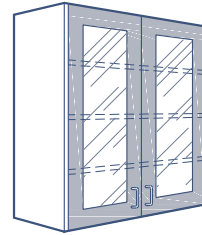
- Framed glass doors are supplied using 3 mm float glass

48" High Wall Cabinets



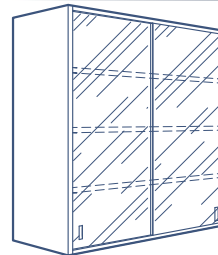
Open shelf unit

Model no.	Width	
	inches	mm
Fl-72-15-14	15	381
Fl-72-18-14	18	457
Fl-72-21-14	21	533
Fl-72-24-14	24	610
Fl-72-30-14	30	762
Fl-72-36-14	36	914
Fl-72-42-14	42	1067
Fl-72-48-14	48	1219
Fl-72-15-18	15	381
Fl-72-18-18	18	457
Fl-72-21-18	21	533
Fl-72-24-18	24	610
Fl-72-30-18	30	762
Fl-72-36-18	36	914
Fl-72-42-18	42	1067
Fl-72-48-18	48	1219



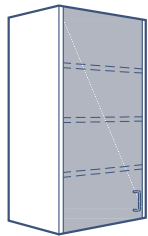
2 glazed hinged door unit

Model no.	Width	
	inches	mm
Fl-76-30-14	30	762
Fl-76-36-14	36	914
Fl-76-42-14	42	1067
Fl-76-48-14	48	1219
Fl-76-30-18	30	762
Fl-76-36-18	36	914
Fl-76-42-18	42	1067
Fl-76-48-18	48	1219



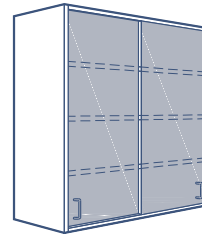
2 glass sliding door unit

Fl-77-30-14	30	762
Fl-77-36-14	36	914
Fl-77-42-14	42	1067
Fl-77-48-14	48	1219
Fl-77-30-18	30	762
Fl-77-36-18	36	914
Fl-77-42-18	42	1067
Fl-77-48-18	48	1219



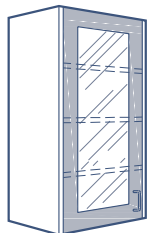
1 glazed hinged door unit

Fl-73-15-14	15	381
Fl-73-18-14	18	457
Fl-73-21-14	21	533
Fl-73-24-14	24	610
Fl-73-15-18	15	381
Fl-73-18-18	18	457
Fl-73-21-18	21	533
Fl-73-24-18	24	610



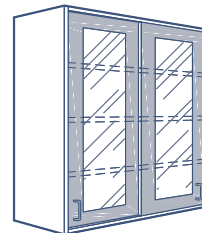
2 sliding door unit

Fl-78-30-14	30	762
Fl-78-36-14	36	914
Fl-78-42-14	42	1067
Fl-78-48-14	48	1219
Fl-78-30-18	30	762
Fl-78-36-18	36	914
Fl-78-42-18	42	1067
Fl-78-48-18	48	1219



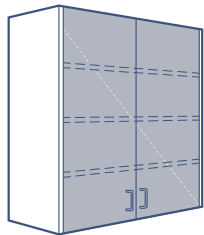
1 hinged door unit

Fl-74-15-14	15	381
Fl-74-18-14	18	457
Fl-74-21-14	21	533
Fl-74-24-14	24	610
Fl-74-15-18	15	381
Fl-74-18-18	18	457
Fl-74-21-18	21	533
Fl-74-24-18	24	610



2 glazed sliding door unit

Fl-79-30-14	30	762
Fl-79-36-14	36	914
Fl-79-42-14	42	1067
Fl-79-48-14	48	1219
Fl-79-30-18	30	762
Fl-79-36-18	36	914
Fl-79-42-18	42	1067
Fl-79-48-18	48	1219

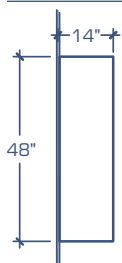


2 hinged door unit

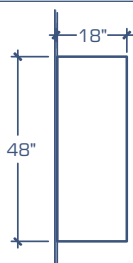
Fl-75-30-14	30	762
Fl-75-36-14	36	914
Fl-75-42-14	42	1067
Fl-75-48-14	48	1219
Fl-75-30-18	30	762
Fl-75-36-18	36	914
Fl-75-42-18	42	1067
Fl-75-48-18	48	1219

Description

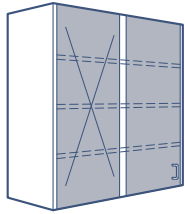
- Unframed glass sliding doors are supplied using 5 mm float glass with finger grooves
- Framed glass doors are supplied using 3 mm float glass



14" depth units

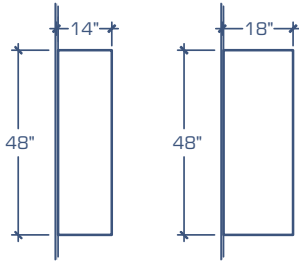


18" depth units

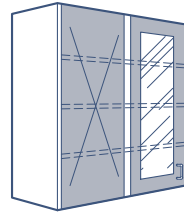


Corner unit with door

Model no.	Width	
	inches	mm
FI-13-30-14	30	762
FI-13-36-14	36	914
FI-13-42-14	42	1067
FI-13-48-14	48	1219
FI-13-30-18	30	762
FI-13-36-18	36	914
FI-13-42-18	42	1067
FI-13-48-18	48	1219

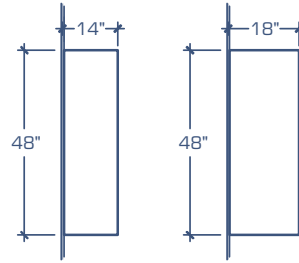


Reverse models are also available by adding "RV" to model number.

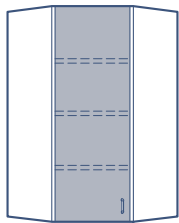


Corner unit with glazed door

Model no.	Width	
	inches	mm
FI-23-30-14	30	762
FI-23-36-14	36	914
FI-23-42-14	42	1067
FI-23-48-14	48	1219
FI-23-30-18	30	762
FI-23-36-18	36	914
FI-23-42-18	42	1067
FI-23-48-18	48	1219

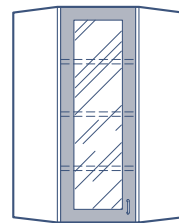


Reverse models are also available by adding "RV" to model number.



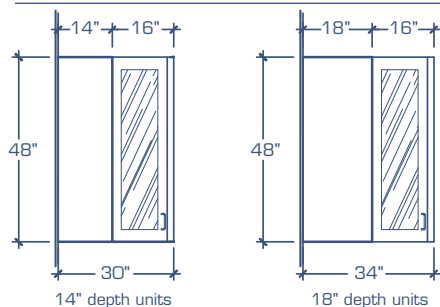
45° corner unit with door

FI-18-14-14	14	365
FI-18-18-18	18	457



45° corner unit with glazed door

FI-28-14-14	14	365
FI-28-18-18	18	457



Description

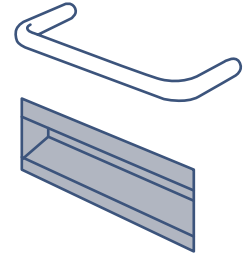
- Framed glass doors are supplied using 3 mm float glass

Cabinet hardware options

1 CABINET PULLS

Standard — Brushed nickel wire pull 4" c/c

- WP Stainless steel wire pull 4" c/c
- PP Black recessed 4" x 2" pull
- AP Aluminum recessed 4" x 2" pull



2 DRAWER SLIDE ARMS

Standard — 75% opening self closing slide arms on all regular drawers – SEFA 8M – 150 lbs

Standard — 100% full extension opening on file drawers – SEFA 8M – 100 lbs

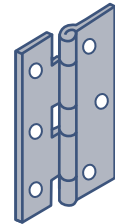
Standard — 100% full extension opening on all drawers larger than 36" – SEFA 8M – 100 lbs

- TZ 100% full extension opening on all project drawers – SEFA 8M – 100 lbs
- TY 100% full extension opening with self closing option on all project drawers – SEFA 8M – 100 lbs
- TX 100% full extension opening on all project drawers – SEFA 8M – 200 lbs

3 CABINET HINGES

Standard — 5-knuckles stainless steel vibra finished

- BH 5-knuckles black finish
- SH 5-knuckles stainless steel



4 LOCKS

Standard — None

- KA 8-disc chrome plated with removable core on all doors and all drawers
- KT 8-disc chrome plated with removable core on all drawers
- KP 8-disc chrome plated with removable core on all doors
- K1 8-disc chrome plated with removable core on top drawers only
- KF 8-disc chrome plated with removable core on file drawers only
- KC Chrome plated padlock bracket on all doors and all drawers
- XI Interlocking system that permits only one drawer opening at the time (with full extension arms only) – standard on mobile cabinets
- TP Theft security panels between drawers

- L1 All locks different with a project master key
- L2 All locks the same per cabinet with a project master key
- L3 All locks the same per room with a room master key
- L4 All locks the same

5 DOOR CATCHES

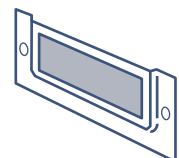
Standard — Spring loaded roller door catch



6 CARD HOLDERS

Standard — None

- CH Aluminum 4" x 2" card holder on all drawers
- CD Aluminum 4" x 2" card holder on all doors



7 CABINET SHELF
Standard — One (1) full depth shelf, adjustable on ½" increment

- T1 Additional shelf per cabinet
- P1 Pull out shelf for cabinets 15", 18", 21" or 24" only
- PR Pull out shelf on right cabinet side
- PL Pull out shelf on left cabinet side
- S2 Split shelves (2 pieces), adjustable on ½" increment
- FS Cabinet full extension shelf supplied with full extension slide arms – 200 lbs

8 FINISHED PANELS
Standard — Removable access panel on cupboard cabinets only (open back on drawer cab)

- BP Removable access panel on drawer units
- FO Painted steel flat finished back welded to cabinet
- FT Painted steel flat finished top panel welded to cabinet

9 CABINET BASE OPTIONS
Standard — 3" x 4" high integral front toe kick with four 3/8"x 2 ½" leveler glides

- PN Cabinet levelers supplied with grey rubber cap
- SS Four swivel casters 4" height, rubber, with brakes on two front casters – 275 lbs
- WB Cabinet supplied with no toe kick (4" shorter)
- RT Cabinet supplied with a right toe kick 3" x 4" high – not available on tall cabinets
- LT Cabinet supplied with a left toe kick 3" x 4" high – not available on tall cabinets
- VT Cabinet supplied with a venting grill on the front toe kick

10 VARIOUS OTHER CABINET OPTIONS

- RV Reverse door/drawer arrangement
- SK Sink support consisting on 2 horizontal struts with 4 rod hangers
- LG 6mm Laminated glass in lieu of standard 3mm float glass
- TG 6mm Tempered glass in lieu of standard 3mm float glass
- SB Stainless steel bin insert into bin cabinets
- GB Galvanized bin insert into bin cabinets
- LP Leak proof bin insert into bin cabinets
- WC Grill(s) incorporated into cabinet door(s)
- SS4 Same cabinet but supplied in stainless steel T.304
- SS6 Same cabinet but supplied in stainless steel T.316
- AC Self closing doors(s) option to flammable cabinets



BEDCOLAB LTD

**2305, Francis-Hugues Avenue
Laval, Quebec, Canada H7S 1N5**

Phone: 514.384.2820 / 1.800.461.6414

Fax: 514.384.9210

E-mail: information@bedcolab.com

Web Site: www.bedcolab.com



Authorized dealer: