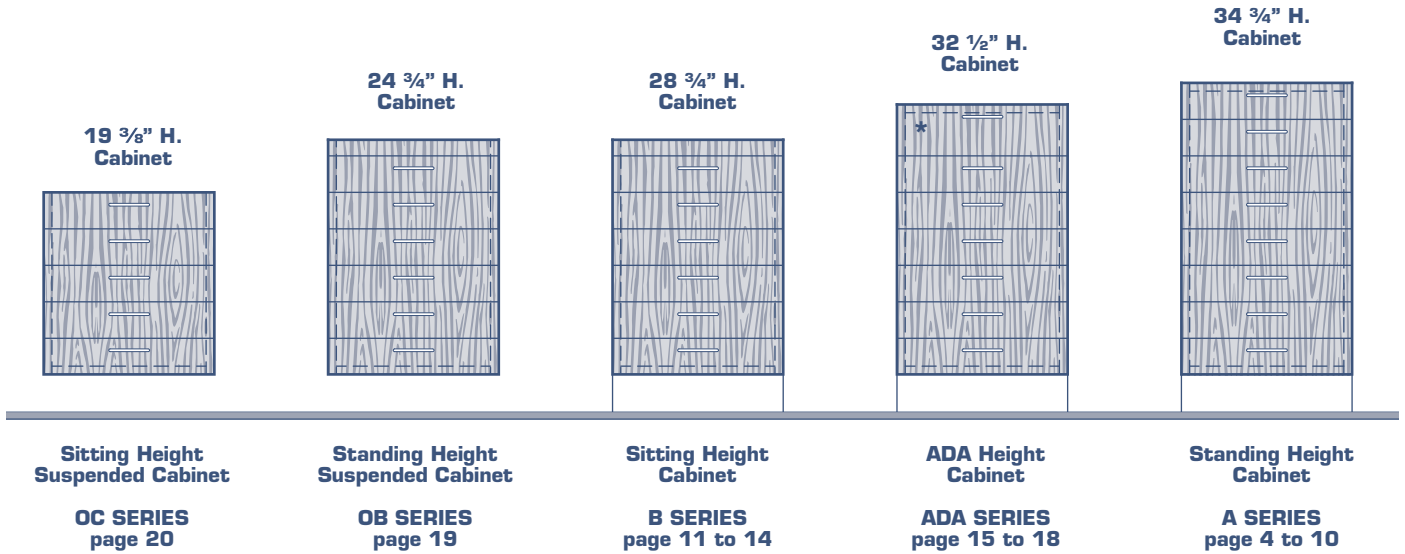


Features

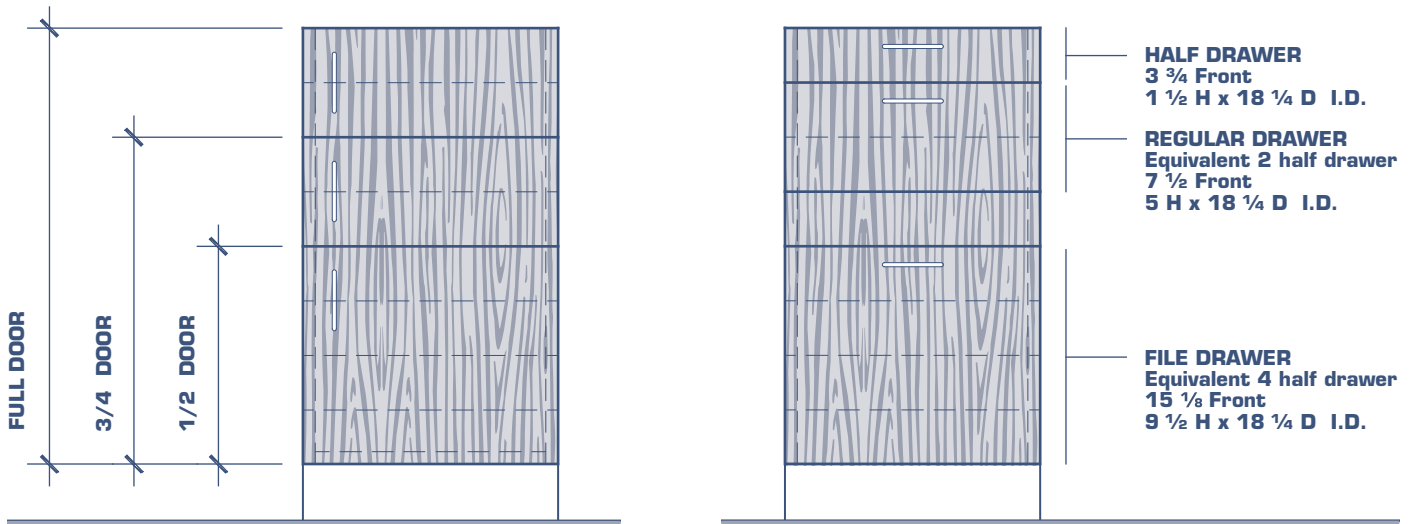
Benefits

1	Superior front horizontal rail.	Additional rigidity. Impurity prevention.
2	Removable front center post.	Full flexibility for all door and drawer arrangements.
3	The front posts can accommodate varying arrangements of doors & drawers.	Flexibility even after installation
4	Wrap-around cabinet shell construction.	Provides maximum strength and eliminates need for a fixed finished back.
5	Removable back panel.	Allows accessibility to mechanical services.
6	Slotted rear post.	Support for slide arms and shelves. Full flexibility for future needs.
7	Cabinet body is fully enclosed.	Facilitating maintenance and cleaning.
8	Extended drawer depth.	Maximized storage capacity.
9	The doors and drawer fronts are made of 3/4" thick clear maple wood.	Creating a cabinet with style and elegance.
10	Self-closing ball bearing slide arms.	Avoiding accidental spills.
11	Threaded 5/16" leveler with large foot.	Solid, sturdy and prevents scratching.
12	Various standard handles.	Adhere to design intent.

Harmony Flush Overlay Door/Drawer Combination Possibilities



Our Cabinet design is engineered for interchangeability of the same drawer and door heights for all different cabinet types including the following drawer and door heights:

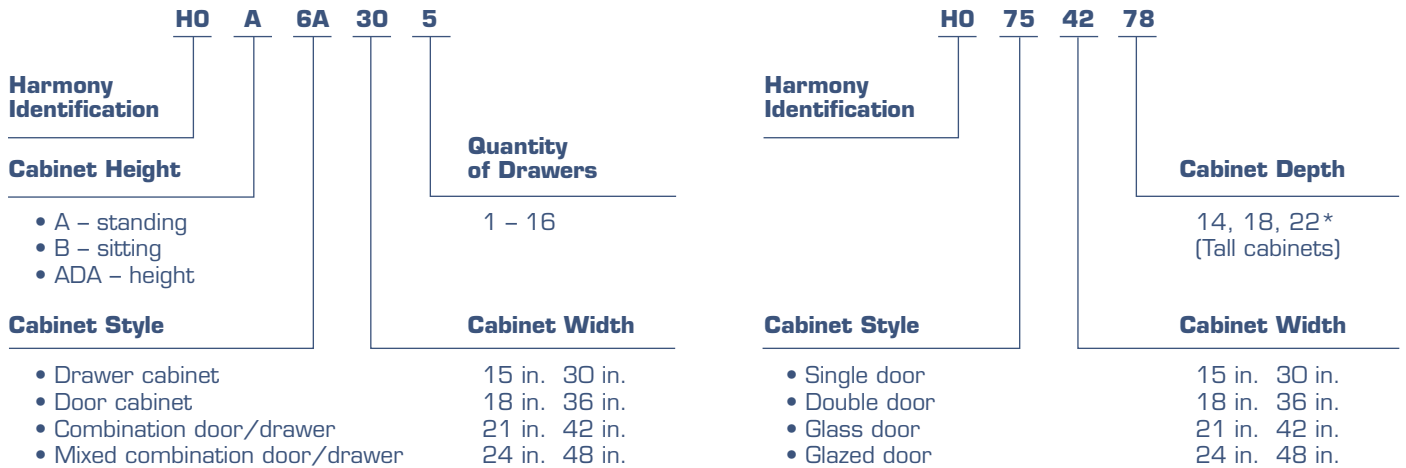


* The top drawer and full height door on an ADA cabinet are of different heights than for all other cabinets and will only fit at this position.

Reading the product identification numbers

The Bedcolab product identification number is simple, making it easy to verify that you have ordered the correct cabinet. Each number or letter in the designation represents an aspect of the cabinet. Below are examples of the product identification numbers you will see in this catalogue along with an explanation of each designation:

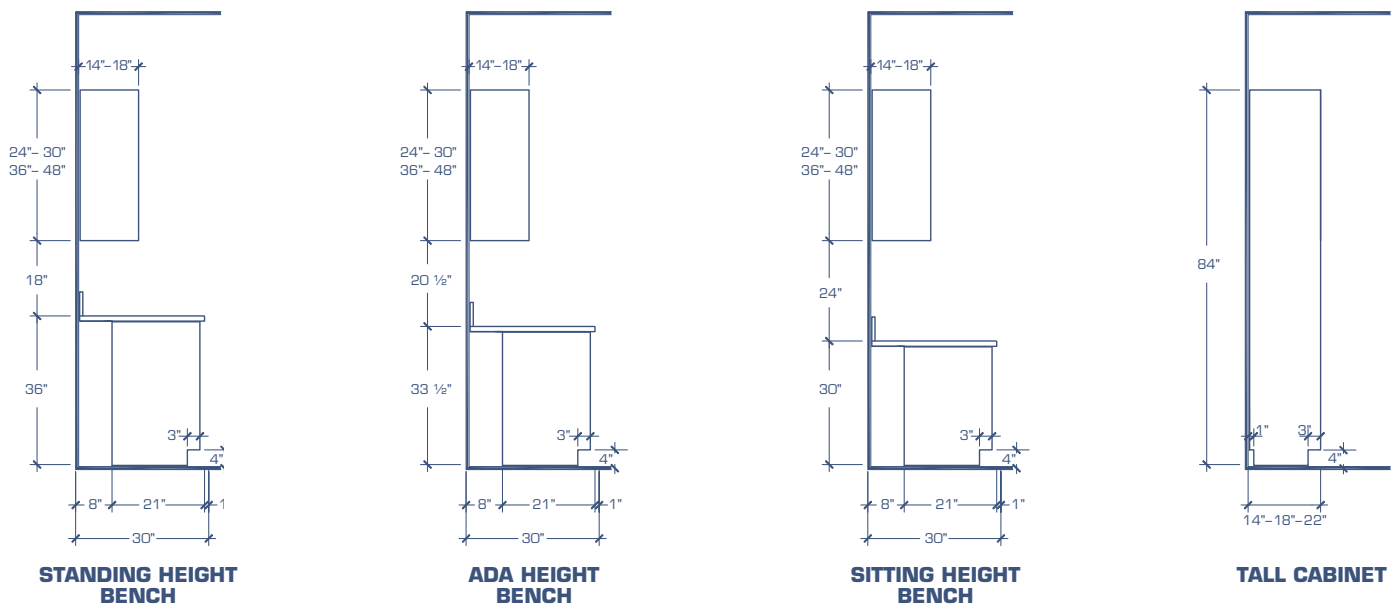
Product Identification Code



Base cabinets

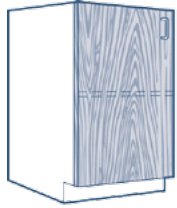
Wall and floor cases

Please refer to page 28 and 29 of this Harmony catalogue for hardware options and optional cabinet features.



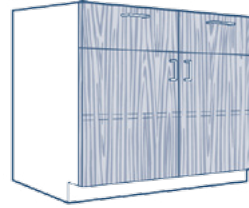
Typical Side Views

Standing Height Base Cabinets



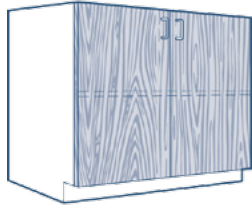
Model no.	Width	
	inches	mm
HO-A1-15	15	381
HO-A1-18	18	457
HO-A1-21	21	533
HO-A1-24	24	610

1 door unit



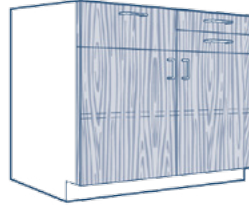
Model no.	Width	
	inches	mm
HO-A5-30-2	30	762
HO-A5-36-2	36	914
HO-A5-42-2	42	1067
HO-A5-48-2	48	1219

2 drawer & 2 door unit



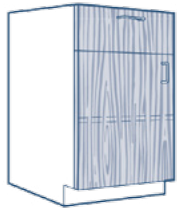
HO-A2-30	30	762
HO-A2-36	36	914
HO-A2-42	42	1067
HO-A2-48	48	1219

2 door unit



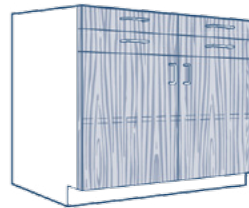
HO-A5-30-3	30	762
HO-A5-36-3	36	914
HO-A5-42-3	42	1067
HO-A5-48-3	48	1219

2 half drawer, 1 drawer & 2 door unit



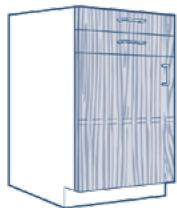
HO-A4-15-1	15	381
HO-A4-18-1	18	457
HO-A4-21-1	21	533
HO-A4-24-1	24	610

1 drawer - 1 door unit



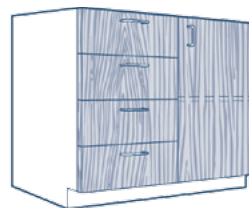
HO-A5-30-4	30	762
HO-A5-36-4	36	914
HO-A5-42-4	42	1067
HO-A5-48-4	48	1219

4 half drawer & 2 door unit



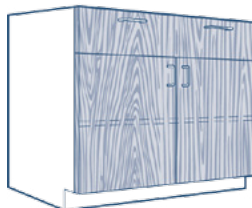
HO-A4-15-2	15	381
HO-A4-18-2	18	457
HO-A4-21-2	21	533
HO-A4-24-2	24	610

2 half drawer & 1 door unit



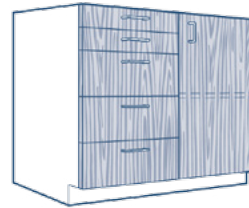
HO-A6-30-4	30	762
HO-A6-36-4	36	914
HO-A6-42-4	42	1067
HO-A6-48-4	48	1219

4 drawer & 1 door unit



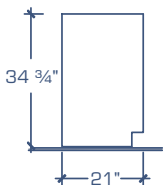
HO-A5-30-1	30	762
HO-A5-36-1	36	914
HO-A5-42-1	42	1067
HO-A5-48-1	48	1219

1 drawer & 2 door unit



HO-A6-30-5	30	762
HO-A6-36-5	36	914
HO-A6-42-5	42	1067
HO-A6-48-5	48	1219

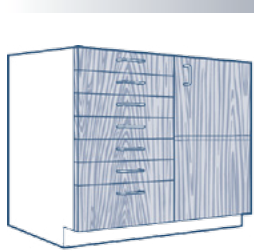
2 half drawer, 3 drawer & 1 door unit



Legend:

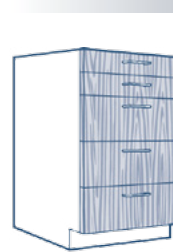
- *1 Double pulls on 30" to 48" cabinet sizes
- *2 File drawers supplied with hanger bars and full extension slide arms to fit legal or letter size files
- *3 Full extension drawer slide arms supplied as standard on these cabinets
- *4 Back panels in these cabinets are 9" high

Reverse models are also available by adding "RV" to model number.



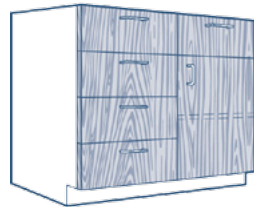
Model no.	Width	
	inches	mm
HO-A6-30-7	30	762
HO-A6-36-7	36	914
HO-A6-42-7	42	1067
HO-A6-48-7	48	1219

6 half drawer, 1 drawer & 1 door unit



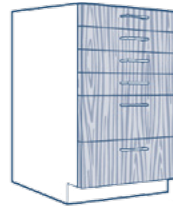
Model no.	Width	
	inches	mm
HO-A7-15-5	15	381
HO-A7-18-5	18	457
HO-A7-21-5	21	533
HO-A7-24-5	24	610
HO-A7-30-5 *1	30	762
HO-A7-36-5 *1	36	914
HO-A7-42-5 *1 *3	42	1067
HO-A7-48-5 *1 *3	48	1219

2 half drawer & 3 drawer unit



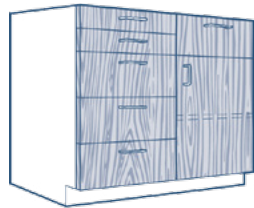
HO-A6A-30-5	30	762
HO-A6A-36-5	36	914
HO-A6A-42-5	42	1067
HO-A6A-48-5	48	1219

5 drawer & 1 door unit



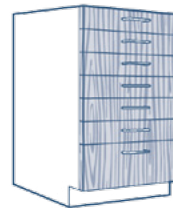
HO-A7-15-6	15	381
HO-A7-18-6	18	457
HO-A7-21-6	21	533
HO-A7-24-6	24	610
HO-A7-30-6 *1	30	762
HO-A7-36-6 *1	36	914
HO-A7-42-6 *1 *3	42	1067
HO-A7-48-6 *1 *3	48	1219

4 half drawer & 2 drawer unit



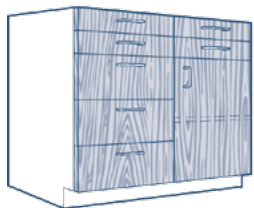
HO-A6A-30-6	30	762
HO-A6A-36-6	36	914
HO-A6A-42-6	42	1067
HO-A6A-48-6	48	1219

2 half drawer, 4 drawer & 1 door unit



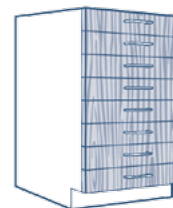
HO-A7-15-7	15	381
HO-A7-18-7	18	457
HO-A7-21-7	21	533
HO-A7-24-7	24	610
HO-A7-30-7 *1	30	762
HO-A7-36-7 *1	36	914
HO-A7-42-7 *1 *3	42	1067
HO-A7-48-7 *1 *3	48	1219

6 half drawer & 1 drawer unit



HO-A6A-30-7	30	762
HO-A6A-36-7	36	914
HO-A6A-42-7	42	1067
HO-A6A-48-7	48	1219

4 half drawer, 3 drawer & 1 door unit



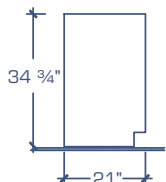
HO-A7-15-8	15	381
HO-A7-18-8	18	457
HO-A7-21-8	21	533
HO-A7-24-8	24	610
HO-A7-30-8 *1	30	762
HO-A7-36-8 *1	36	914
HO-A7-42-8 *1 *3	42	1067
HO-A7-48-8 *1 *3	48	1219

8 half drawer unit



HO-A7-15-4	15	381
HO-A7-18-4	18	457
HO-A7-21-4	21	533
HO-A7-24-4	24	610
HO-A7-30-4 *1	30	762
HO-A7-36-4 *1	36	914
HO-A7-42-4 *1 *3	42	1067
HO-A7-48-4 *1 *3	48	1219

4 drawer unit

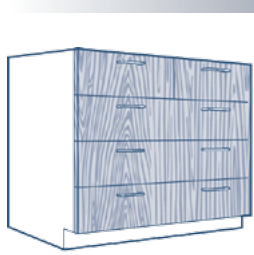


Legend:

- *1 Double pulls on 30" to 48" cabinet sizes
- *2 File drawers supplied with hanger bars and full extension slide arms to fit legal or letter size files
- *3 Full extension drawer slide arms supplied as standard on these cabinets
- *4 Back panels in these cabinets are 9" high

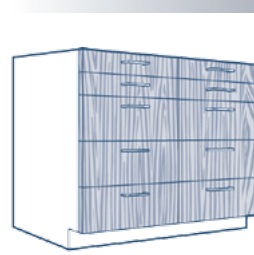
Reverse models are also available by adding "RV" to model number.

Standing Height Base Cabinets



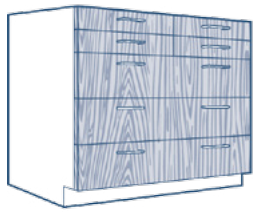
Model no.	Width	
	inches	mm
HO-A8-30-5 *1	30	762
HO-A8-36-5 *1	36	914
HO-A8-42-5 *1 *3	42	1067
HO-A8-48-5 *1 *3	48	1219

5 drawer unit



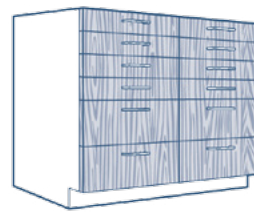
Model no.	Width	
	inches	mm
HO-A10-30-10	30	762
HO-A10-36-10	36	914
HO-A10-42-10	42	1067
HO-A10-48-10	48	1219

4 half drawer & 6 drawer unit



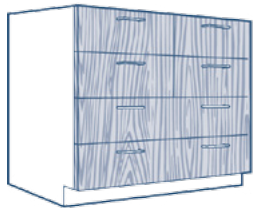
HO-A8-30-7 *1	30	762
HO-A8-36-7 *1	36	914
HO-A8-42-7 *1 *3	42	1067
HO-A8-48-7 *1 *3	48	1219

4 half drawer & 3 drawer unit



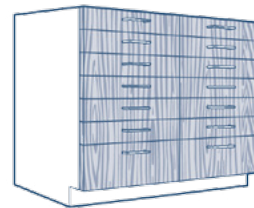
HO-A10-30-12	30	762
HO-A10-36-12	36	914
HO-A10-42-12	42	1067
HO-A10-48-12	48	1219

8 half drawer & 4 drawer unit



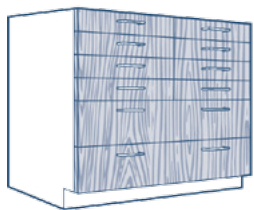
HO-A9-30-6 *1	30	762
HO-A9-36-6 *1	36	914
HO-A9-42-6 *1 *3	42	1067
HO-A9-48-6 *1 *3	48	1219

6 drawer unit



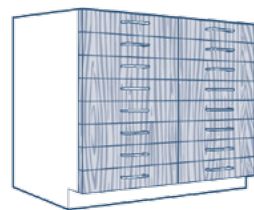
HO-A10-30-14	30	762
HO-A10-36-14	36	914
HO-A10-42-14	42	1067
HO-A10-48-14	48	1219

12 half drawer & 2 drawer unit



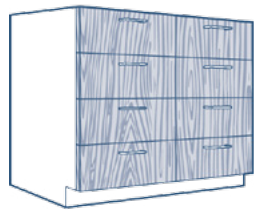
HO-A9-30-10 *1	30	762
HO-A9-36-10 *1	36	914
HO-A9-42-10 *1 *3	42	1067
HO-A9-48-10 *1 *3	48	1219

8 half drawer & 2 drawer unit



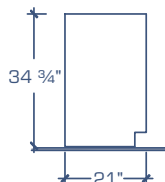
HO-A10-30-16	30	762
HO-A10-36-16	36	914
HO-A10-42-16	42	1067
HO-A10-48-16	48	1219

16 half drawer unit



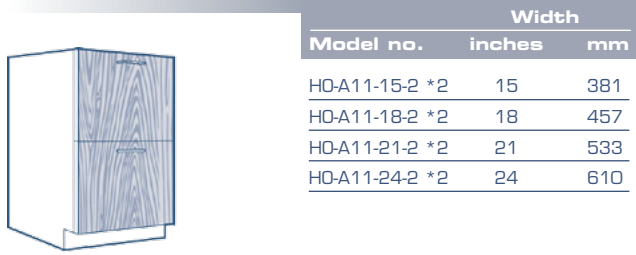
HO-A10-30-8	30	762
HO-A10-36-8	36	914
HO-A10-42-8	42	1067
HO-A10-48-8	48	1219

8 drawer unit



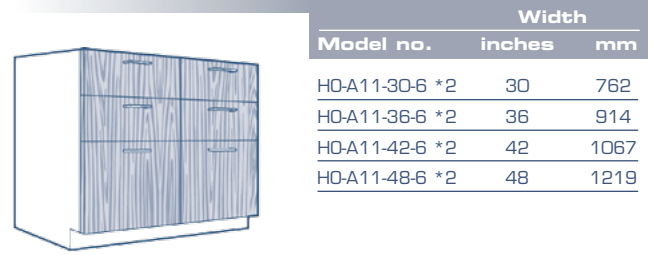
Legend:

- *1 Double pulls on 30" to 48" cabinet sizes
- *2 File drawers supplied with hanger bars and full extension slide arms to fit legal or letter size files
- *3 Full extension drawer slide arms supplied as standard on these cabinets
- *4 Back panels in these cabinets are 9" high



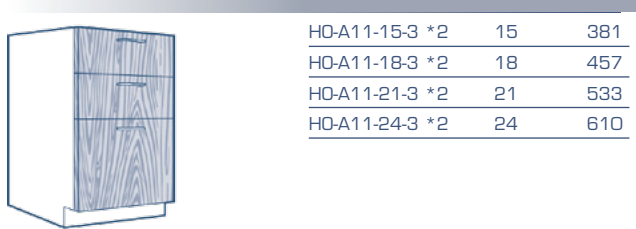
Model no.	Width	
	inches	mm
HO-A11-15-2 *2	15	381
HO-A11-18-2 *2	18	457
HO-A11-21-2 *2	21	533
HO-A11-24-2 *2	24	610

2 file drawer unit



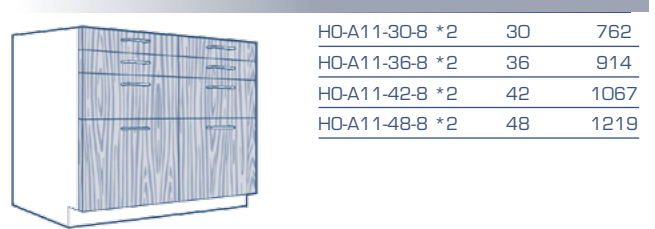
Model no.	Width	
	inches	mm
HO-A11-30-6 *2	30	762
HO-A11-36-6 *2	36	914
HO-A11-42-6 *2	42	1067
HO-A11-48-6 *2	48	1219

4 drawer & 2 file drawer unit



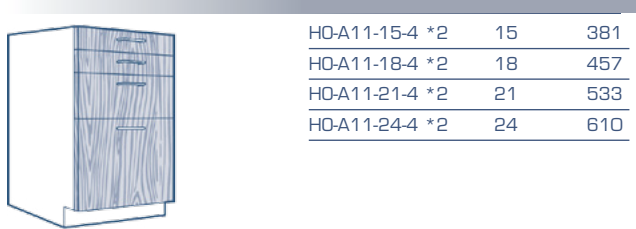
HO-A11-15-3 *2	15	381
HO-A11-18-3 *2	18	457
HO-A11-21-3 *2	21	533
HO-A11-24-3 *2	24	610

2 drawer & 1 file drawer unit



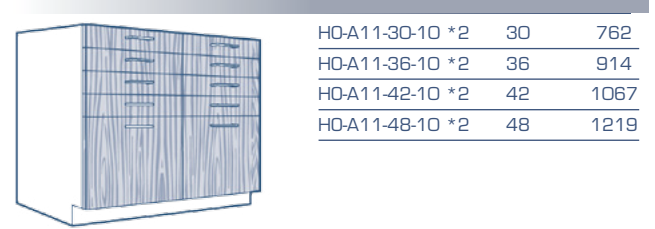
HO-A11-30-8 *2	30	762
HO-A11-36-8 *2	36	914
HO-A11-42-8 *2	42	1067
HO-A11-48-8 *2	48	1219

4 half drawer, 2 drawer & 2 file drawer unit



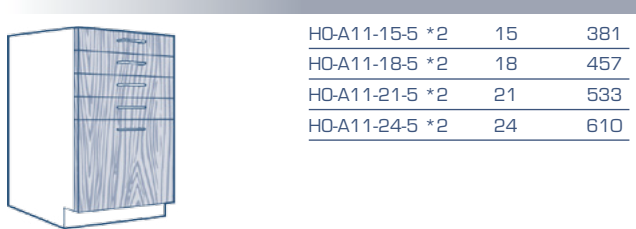
HO-A11-15-4 *2	15	381
HO-A11-18-4 *2	18	457
HO-A11-21-4 *2	21	533
HO-A11-24-4 *2	24	610

2 half drawer, 1 drawer & 1 file drawer unit



HO-A11-30-10 *2	30	762
HO-A11-36-10 *2	36	914
HO-A11-42-10 *2	42	1067
HO-A11-48-10 *2	48	1219

8 half drawer & 2 file drawer unit



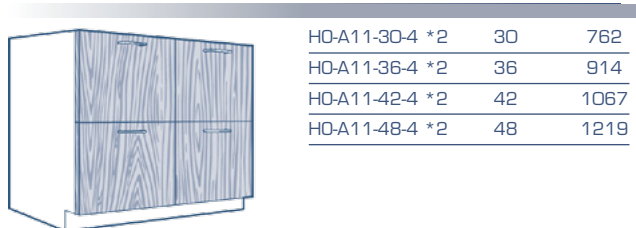
HO-A11-15-5 *2	15	381
HO-A11-18-5 *2	18	457
HO-A11-21-5 *2	21	533
HO-A11-24-5 *2	24	610

4 half drawer & 1 file drawer unit



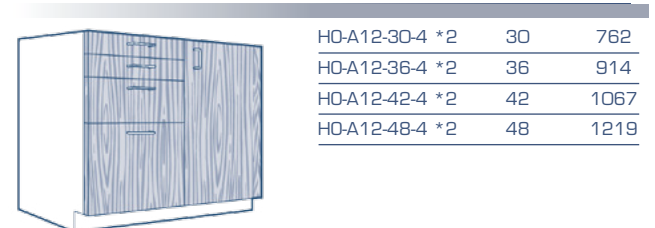
HO-A12-30-3 *2	30	762
HO-A12-36-3 *2	36	914
HO-A12-42-3 *2	42	1067
HO-A12-48-3 *2	48	1219

2 drawer, 1 file drawer & 1 door unit



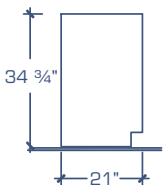
HO-A11-30-4 *2	30	762
HO-A11-36-4 *2	36	914
HO-A11-42-4 *2	42	1067
HO-A11-48-4 *2	48	1219

4 file drawer unit



HO-A12-30-4 *2	30	762
HO-A12-36-4 *2	36	914
HO-A12-42-4 *2	42	1067
HO-A12-48-4 *2	48	1219

2 half drawer, 1 drawer, 1 file drawer & 1 door unit

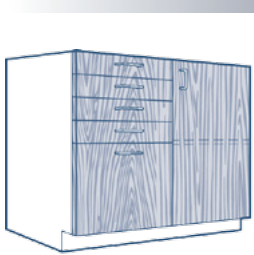


Legend:

- *1 Double pulls on 30" to 48" cabinet sizes
- *2 File drawers supplied with hanger bars and full extension slide arms to fit legal or letter size files
- *3 Full extension drawer slide arms supplied as standard on these cabinets
- *4 Back panels in these cabinets are 9" high

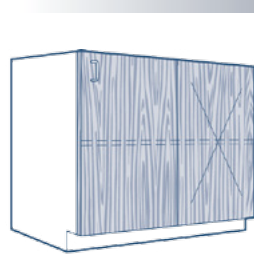
Reverse models are also available by adding "RV" to model number.

Standing Height Base Cabinets



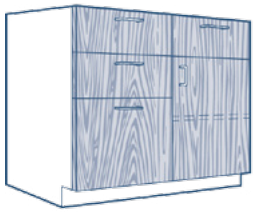
Model no.	Width	
	inches	mm
HO-A12-30-5 *2	30	762
HO-A12-36-5 *2	36	914
HO-A12-42-5 *2	42	1067
HO-A12-48-5 *2	48	1219

4 half drawer, 1 drawer, 1 file drawer & 1 door unit



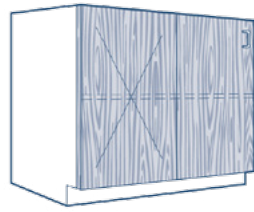
Model no.	Width	
	inches	mm
HO-A20-30	30	762
HO-A20-36	36	914
HO-A20-42	42	1067
HO-A20-48	48	1219

Corner unit



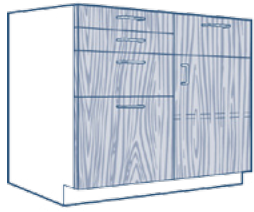
HO-A13-30-4 *2	30	762
HO-A13-36-4 *2	36	914
HO-A13-42-4 *2	42	1067
HO-A13-48-4 *2	48	1219

3 drawer, 1 file drawer & 1 door unit



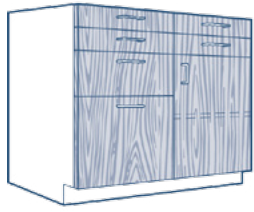
HO-A21-30	30	762
HO-A21-36	36	914
HO-A21-42	42	1067
HO-A21-48	48	1219

Corner unit



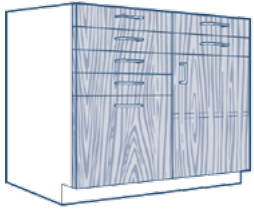
HO-A13-30-5 *2	30	762
HO-A13-36-5 *2	36	914
HO-A13-42-5 *2	42	1067
HO-A13-48-5 *2	48	1219

2 half drawer, 2 drawer, 1 file drawer & 1 door unit



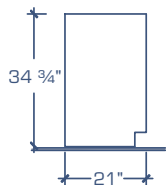
HO-A13-30-6 *2	30	762
HO-A13-36-6 *2	36	914
HO-A13-42-6 *2	42	1067
HO-A13-48-6 *2	48	1219

4 half drawer, 1 drawer, 1 file drawer & 1 door unit



HO-A13-30-7 *2	30	762
HO-A13-36-7 *2	36	914
HO-A13-42-7 *2	42	1067
HO-A13-48-7 *2	48	1219

6 half drawer, 1 file drawer & 1 door unit



Legend:

- *1 Double pulls on 30" to 48" cabinet sizes
- *2 File drawers supplied with hanger bars and full extension slide arms to fit legal or letter size files
- *3 Full extension drawer slide arms supplied as standard on these cabinets
- *4 Back panels in these cabinets are 9" high

Reverse models are also available by adding "RV" to model number.

Model no.	Width	
	inches	mm
HO-A15-15 *4	15	381
HO-A15-18 *4	18	457
HO-A15-21 *4	21	533
HO-A15-24 *4	24	610

1 door sink unit

Model no.	Width	
	inches	mm
HO-A24-18	18	457
HO-A24-24	24	610

Description

- Fixed upper panel for mounting of services.
- This unit is mostly used under fume hoods where services are deck mounted.

Remote control unit - 1 door

HO-A15A-15 *4	15	381
HO-A15A-18 *4	18	457
HO-A15A-21 *4	21	533
HO-A15A-24 *4	24	610

1 door sink unit - false panel above

Description

- Fixed upper panel for mounting of services.
- This unit is mostly used under fume hoods where services are deck mounted.

HO-A24-30	30	762
HO-A24-36	36	914
HO-A24-48	48	1219

Description

- Fixed upper panel for mounting of services.
- This unit is mostly used under fume hoods where services are deck mounted.

Remote control unit - 2 doors

HO-A16-30 *4	30	762
HO-A16-36 *4	36	914
HO-A16-42 *4	42	1067
HO-A16-48 *4	48	1219

2 door sink unit

HO-A28-18	18	457
HO-A28-24	24	316

Description

- Bins are not included.
- Bins can be supplied by adding the following letters after catalog number:
 - "GB" for galvanized steel;
 - "SSB" for stainless steel type 304;
 - For leak proof bin add the letters "LP".

1 door bin unit

HO-A16A-30 *4	30	762
HO-A16A-36 *4	36	914
HO-A16A-42 *4	42	1067
HO-A16A-48 *4	48	1219

2 door sink unit - false panel above

Description

- Fixed upper panel for mounting of services.
- This unit is mostly used under fume hoods where services are deck mounted.

HO-A29-36	36	914
HO-A29-48	48	1219

Description

- Bins are not included.
- Bins can be supplied by adding the following letters after catalog number:
 - "GB" for galvanized steel;
 - "SSB" for stainless steel type 304;
 - For leak proof bin add the letters "LP".

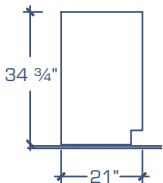
2 door bin unit

HO-A17-52 *4	52	1321
HO-A17-58 *4	58	1473

Island end sink unit

HO-A35-15	15	381
HO-A35-18	18	457
HO-A35-21	21	533
HO-A35-24	24	610
HO-A35-30	30	762
HO-A35-36	36	914
HO-A35-42	42	1067
HO-A35-48	48	1219

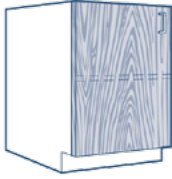
Open unit



Legend:

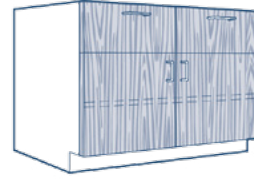
- *1 Double pulls on 30" to 48" cabinet sizes
- *2 File drawers supplied with hanger bars and full extension slide arms to fit legal or letter size files
- *3 Full extension drawer slide arms supplied as standard on these cabinets
- *4 Back panels in these cabinets are 9" high

Sitting Height Base Cabinets



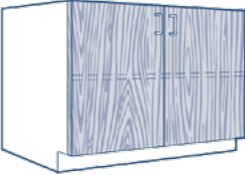
Model no.	Width	
	inches	mm
HO-B1-15	15	381
HO-B1-18	18	457
HO-B1-21	21	533
HO-B1-24	24	610

1 door unit



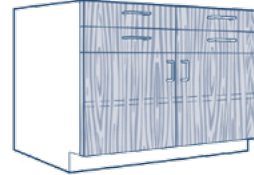
Model no.	Width	
	inches	mm
HO-B5-30-2	30	762
HO-B5-36-2	36	914
HO-B5-42-2	42	1067
HO-B5-48-2	48	1219

2 drawer & 2 door unit



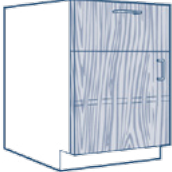
HO-B2-30	30	762
HO-B2-36	36	914
HO-B2-42	42	1067
HO-B2-48	48	1219

2 door unit



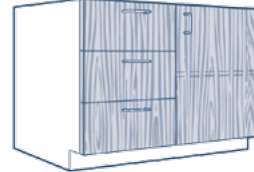
HO-B5-30-4	30	762
HO-B5-36-4	36	914
HO-B5-42-4	42	1067
HO-B5-48-4	48	1219

4 half drawer & 2 door unit



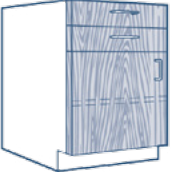
HO-B4-15-1	15	381
HO-B4-18-1	18	457
HO-B4-21-1	21	533
HO-B4-24-1	24	610

1 drawer & 1 door unit



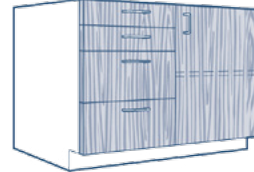
HO-B6-30-3	30	762
HO-B6-36-3	36	914
HO-B6-42-3	42	1067
HO-B6-48-3	48	1219

3 drawer & 1 door unit




HO-B4-15-2	15	381
HO-B4-18-2	18	457
HO-B4-21-2	21	533
HO-B4-24-2	24	610

2 half drawer & 1 door unit



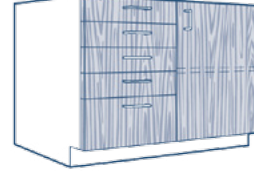
HO-B6-30-4	30	762
HO-B6-36-4	36	914
HO-B6-42-4	42	1067
HO-B6-48-4	48	1219

2 half drawer, 2 drawer & 1 door unit



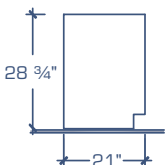
HO-B5-30-1 *1	30	762
HO-B5-36-1 *1	36	914
HO-B5-42-1 *1 *3	42	1067
HO-B5-48-1 *1 *3	48	1219

1 drawer & 2 door unit



HO-B6-30-5	30	762
HO-B6-36-5	36	914
HO-B6-42-5	42	1067
HO-B6-48-5	48	1219

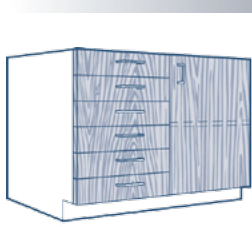
4 half drawer, 1 drawer & 1 door unit



Legend:

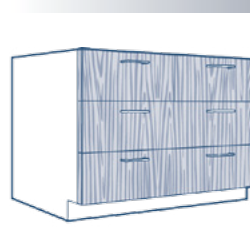
- *1 Double pulls on 30" to 48" cabinet sizes
- *2 File drawers supplied with hanger bars and full extension slide arms to fit legal or letter size files
- *3 Full extension drawer slide arms supplied as standard on these cabinets
- *4 Back panels in these cabinets are 9" high

Reverse models are also available by adding "RV" to model number.



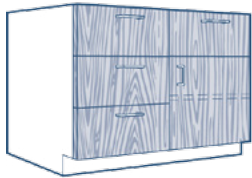
Model no.	Width	
	inches	mm
HO-B6-30-6	30	762
HO-B6-36-6	36	914
HO-B6-42-6	42	1067
HO-B6-48-6	48	1219

6 half drawer & 1 door unit



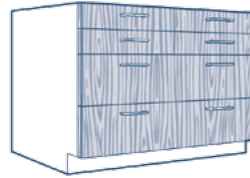
Model no.	Width	
	inches	mm
HO-B8-30-4 *1	30	762
HO-B8-36-4 *1	36	914
HO-B8-42-4 *1 *3	42	1067
HO-B8-48-4 *1 *3	48	1219

4 drawer unit



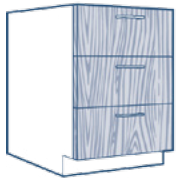
HO-B6A-30-4	30	762
HO-B6A-36-4	36	914
HO-B6A-42-4	42	1067
HO-B6A-48-4	48	1219

4 drawer & 1 door unit



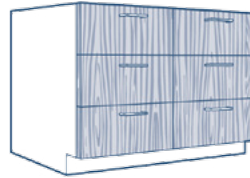
HO-B8-30-6 *1	30	762
HO-B8-36-6 *1	36	914
HO-B8-42-6 *1 *3	42	1067
HO-B8-48-6 *1 *3	48	1219

4 half drawer & 2 drawer unit



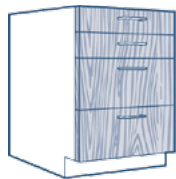
HO-B7-15-3	15	381
HO-B7-18-3	18	457
HO-B7-21-3	21	533
HO-B7-24-3	24	610
HO-B7-30-3 *	30	762
HO-B7-36-3 *	36	914
HO-B7-42-3 *1 *3	42	1067
HO-B7-48-3 *1 *3	48	1219

3 drawer unit



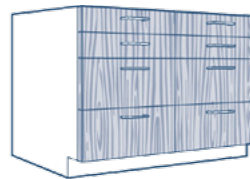
HO-B10-30-6	30	762
HO-B10-36-6	36	914
HO-B10-42-6	42	1067
HO-B10-48-6	48	1219

6 drawer unit



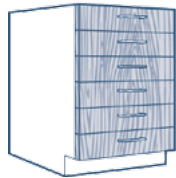
HO-B7-15-4	15	381
HO-B7-18-4	18	457
HO-B7-21-4	21	533
HO-B7-24-4	24	610
HO-B7-30-4 *1	30	762
HO-B7-36-4 *1	36	914
HO-B7-42-4 *1 *3	42	1067
HO-B7-48-4 *1 *3	48	1219

2 half drawer & 2 drawer unit



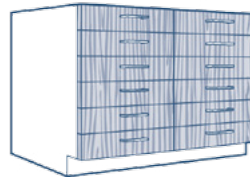
HO-B10-30-8	30	762
HO-B10-36-8	36	914
HO-B10-42-8	42	1067
HO-B10-48-8	48	1219

4 half drawer & 4 drawer unit



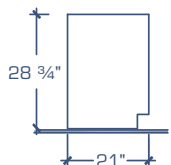
HO-B7-15-6	15	381
HO-B7-18-6	18	457
HO-B7-21-6	21	533
HO-B7-24-6	24	610
HO-B7-30-6 *1	30	762
HO-B7-36-6 *1	36	914
HO-B7-42-6 *1 *3	42	1067
HO-B7-48-6 *1 *3	48	1219

6 half drawer unit



HO-B10-30-12	30	762
HO-B10-36-12	36	914
HO-B10-42-12	42	1067
HO-B10-48-12	48	1219

12 half drawer unit

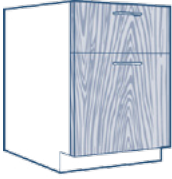


Legend:

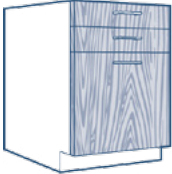
- *1 Double pulls on 30" to 48" cabinet sizes
- *2 File drawers supplied with hanger bars and full extension slide arms to fit legal or letter size files
- *3 Full extension drawer slide arms supplied as standard on these cabinets
- *4 Back panels in these cabinets are 9" high

Reverse models are also available by adding "RV" to model number.

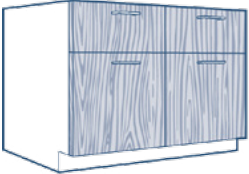
Sitting Height Base Cabinets

	Model no.	Width	
		inches	mm
	HO-B11-15-2 *2	15	381
	HO-B11-18-2 *2	18	457
	HO-B11-21-2 *2	21	533
	HO-B11-24-2 *2	24	610

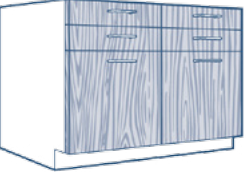
1 drawer & 1 file drawer unit

	HO-B11-15-3 *2	15	381
	HO-B11-18-3 *2	18	457
	HO-B11-21-3 *2	21	533
	HO-B11-24-3 *2	24	610

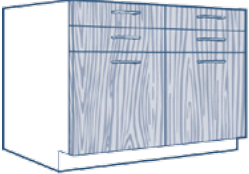
2 half drawer & 1 file drawer unit

	HO-B11-30-4 *2	30	762
	HO-B11-36-4 *2	36	914
	HO-B11-42-4 *2	42	1067
	HO-B11-48-4 *2	48	1219

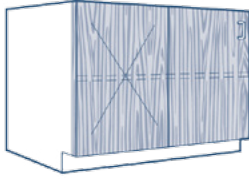
2 drawer & 2 file drawer unit

	HO-B11-30-6 *2	30	762
	HO-B11-36-6 *2	36	914
	HO-B11-42-6 *2	42	1067
	HO-B11-48-6 *2	48	1219

4 half drawer & 2 file drawer unit

	HO-B20-30	30	762
	HO-B20-36	36	914
	HO-B20-42	42	1067
	HO-B20-48	48	1219

Corner unit

	Model no.	Width	
		inches	mm
	HO-B21-30	30	762
	HO-B21-36	36	914
	HO-B21-42	42	1067
	HO-B21-48	48	1219


Corner unit

	HO-B28-18	18	457
	HO-B28-24	24	316

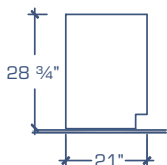
Description

- Bins are not included.
- Bins can be supplied by adding the following letters after catalog number:
 - "GB" for galvanized steel;
 - "SSB" for stainless steel type 304;
 - For leak proof bin add the letters "LP".

1 door bin unit

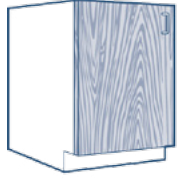
	HO-B35-15	15	381
	HO-B35-18	18	457
	HO-B35-21	21	533
	HO-B35-24	24	610
	HO-B35-30	30	762
	HO-B35-36	36	914
	HO-B35-42	42	1067
	HO-B35-48	48	1219

Open unit



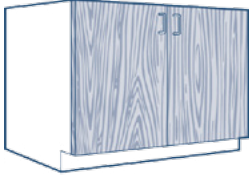
Legend:

- *1 Double pulls on 30" to 48" cabinet sizes
- *2 File drawers supplied with hanger bars and full extension slide arms to fit legal or letter size files
- *3 Full extension drawer slide arms supplied as standard on these cabinets
- *4 Back panels in these cabinets are 9" high



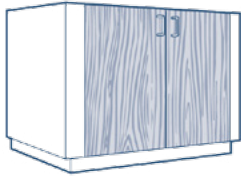
Model no.	Width	
	inches	mm
HO-B15-15 *4	15	381
HO-B15-18 *4	18	457
HO-B15-21 *4	21	533
HO-B15-24 *4	24	610

1 door sink unit



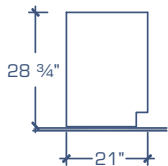
HO-B16-30 *4	30	762
HO-B16-36 *4	36	914
HO-B16-42 *4	42	1067
HO-B16-48 *4	48	1219

2 door sink unit



HO-B17-52 *4	52	1321
HO-B17-58 *4	58	1473

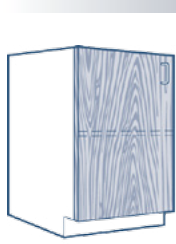
Island end sink unit



Legend:

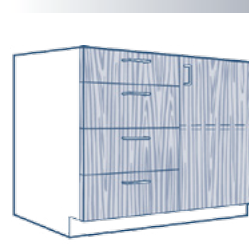
- *1 Double pulls on 30" to 48" cabinet sizes
- *2 File drawers supplied with hanger bars and full extension slide arms to fit legal or letter size files
- *3 Full extension drawer slide arms supplied as standard on these cabinets
- *4 Back panels in these cabinets are 9" high

ADA Height Base Cabinets



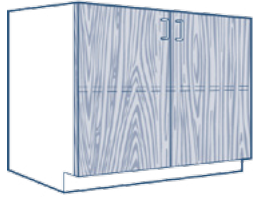
Model no.	Width	
	inches	mm
HO-ADA1-15	15	381
HO-ADA1-18	18	457
HO-ADA1-21	21	533
HO-ADA1-24	24	610

1 door unit



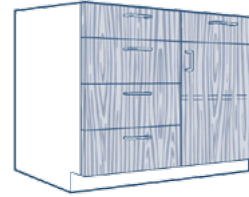
Model no.	Width	
	inches	mm
HO-ADA6-30-4	30	762
HO-ADA6-36-4	36	914
HO-ADA6-42-4	42	1067
HO-ADA6-48-4	48	1219

3 drawer, 1 top drawer & 1 door unit



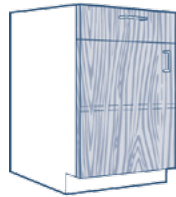
HO-ADA2-30	30	762
HO-ADA2-36	36	914
HO-ADA2-42	42	1067
HO-ADA2-48	48	1219

2 door unit



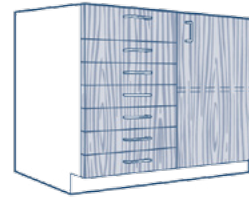
HO-ADA6A-30-5	30	762
HO-ADA6A-36-5	36	914
HO-ADA6A-42-5	42	1067
HO-ADA6A-48-5	48	1219

3 drawer, 2 top drawer & 1 door unit



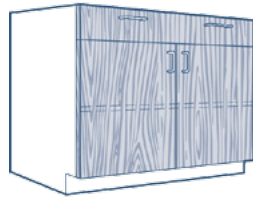
HO-ADA4-15-1	15	381
HO-ADA4-18-1	18	457
HO-ADA4-21-1	21	533
HO-ADA4-24-1	24	610

1 top drawer & 1 door unit



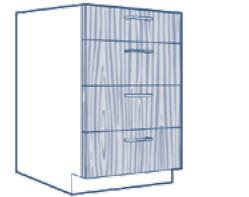
HO-ADA6-30-7	30	762
HO-ADA6-36-7	36	914
HO-ADA6-42-7	42	1067
HO-ADA6-48-7	48	1219

6 half drawer, 1 top drawer & 1 door unit



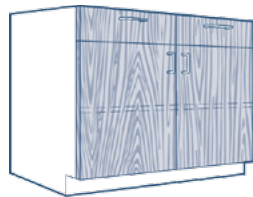
HO-ADA5-30-1	30	762
HO-ADA5-36-1	36	914
HO-ADA5-42-1	42	1067
HO-ADA5-48-1	48	1219

1 top drawer & 2 door unit



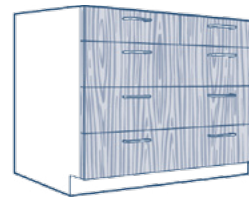
HO-ADA7-15-4	15	381
HO-ADA7-18-4	18	457
HO-ADA7-21-4	21	533
HO-ADA7-24-4	24	610
HO-ADA7-30-4 *1	30	762
HO-ADA7-36-4 *1	36	914
HO-ADA7-42-4 *1*3	42	1067
HO-ADA7-48-4 *1*3	48	1219

3 drawer & 1 top drawer unit



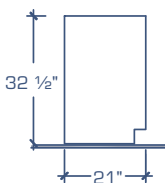
HO-ADA5-30-2	30	762
HO-ADA5-36-2	36	914
HO-ADA5-42-2	42	1067
HO-ADA5-48-2	48	1219

2 top drawer & 2 door unit



HO-ADA8-30-5	30	762
HO-ADA8-36-5	36	914
HO-ADA8-42-5 *3	42	1067
HO-ADA8-48-5 *3	48	1219

3 drawer & 2 top drawer unit



Legend:

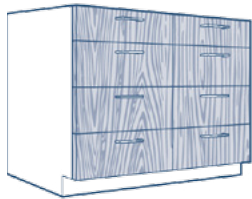
- *1 Double pulls on 30" to 48" cabinet sizes
- *2 File drawers supplied with hanger bars and full extension slide arms to fit legal or letter size files
- *3 Full extension drawer slide arms supplied as standard on these cabinets
- *4 Back panels in these cabinets are 9" high

Reverse models are also available by adding "RV" to model number.



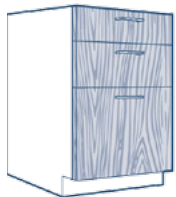
Model no.	Width	
	inches	mm
HO-ADA9-30-6	30	762
HO-ADA9-36-6	36	914
HO-ADA9-42-6 *3	42	1067
HO-ADA9-48-6 *3	48	1219

4 drawer & 2 top drawer unit



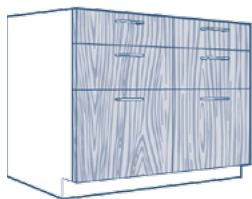
HO-ADA10-30-8	30	762
HO-ADA10-36-8	36	914
HO-ADA10-42-8	42	1067
HO-ADA10-48-8	48	1219

6 drawer & 2 top drawer unit



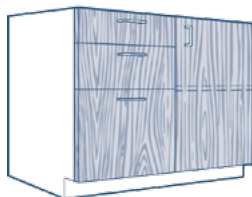
HO-ADA11-15-3 *2	15	381
HO-ADA11-18-3 *2	18	457
HO-ADA11-21-3 *2	21	533
HO-ADA11-24-3 *2	24	610

1 drawer, 1 top drawer & 1 file drawer unit



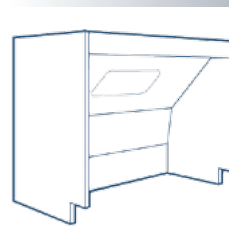
HO-ADA11-30-6 *2	30	762
HO-ADA11-36-6 *2	36	914
HO-ADA11-42-6 *2	42	1067
HO-ADA11-48-6 *2	48	1219

2 drawer, 2 top drawer & 2 file drawer unit



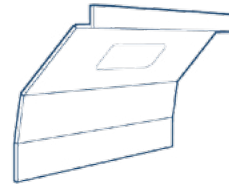
HO-ADA12-30-3 *2	30	762
HO-ADA12-36-3 *2	36	914
HO-ADA12-42-3 *2	42	1067
HO-ADA12-48-3 *2	48	1219

1 drawer, 1 top drawer, 1 file drawer & 1 door unit



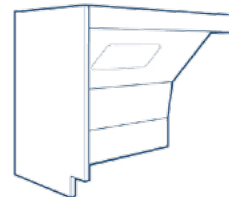
Model no.	Width	
	inches	mm
HO-ADA14-30-LR	30	762
HO-ADA14-36-LR	36	914
HO-ADA14-42-LR	42	1067
HO-ADA14-48-LR	48	1219

Knee Space sink unit w/ 2 side



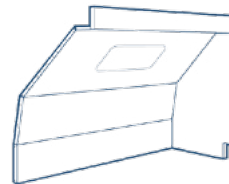
HO-ADA14-30	30	762
HO-ADA14-36	36	914
HO-ADA14-42	42	1067
HO-ADA14-48	48	1219

Knee Space sink unit



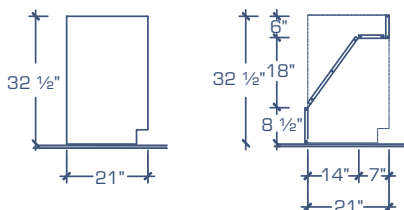
HO-ADA14-30-L	30	762
HO-ADA14-36-L	36	914
HO-ADA14-42-L	42	1067
HO-ADA14-48-L	48	1219

Knee Space sink unit w/ left side



HO-ADA14-30-R	30	762
HO-ADA14-36-R	36	914
HO-ADA14-42-R	42	1067
HO-ADA14-48-R	48	1219

Knee Space sink unit w/ right side

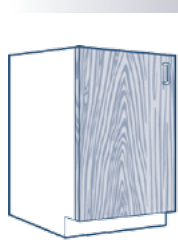


Legend:

- *1 Double pulls on 30" to 48" cabinet sizes
- *2 File drawers supplied with hanger bars and full extension slide arms to fit legal or letter size files
- *3 Full extension drawer slide arms supplied as standard on these cabinets
- *4 Back panels in these cabinets are 9" high

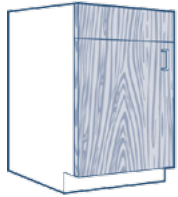
Reverse models are also available by adding "RV" to model number.

ADA Height Base Cabinets



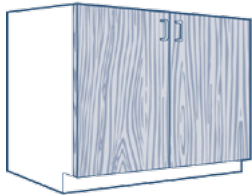
Model no.	Width	
	inches	mm
HO-ADA15-15 *4	15	381
HO-ADA15-18 *4	18	457
HO-ADA15-21 *4	21	533
HO-ADA15-24 *4	24	610

1 door sink unit



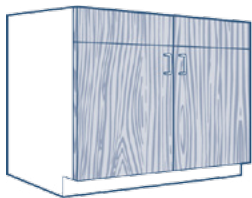
HO-ADA15A-15 *4	15	381
HO-ADA15A-18 *4	18	457
HO-ADA15A-21 *4	21	533
HO-ADA15A-24 *4	24	610

1 door sink unit - false panel above



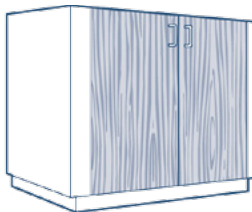
HO-ADA16-30 *4	30	762
HO-ADA16-36 *4	36	914
HO-ADA16-42 *4	42	1067
HO-ADA16-48 *4	48	1219

2 door sink unit



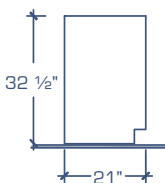
HO-ADA16A-30 *4	30	762
HO-ADA16A-36 *4	36	914
HO-ADA16A-42 *4	42	1067
HO-ADA16A-48 *4	48	1219

2 door sink unit - false panel above



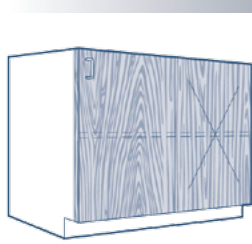
HO-ADA17-52 *4	52	1321
HO-ADA17-58 *4	58	1473

Island end sink unit



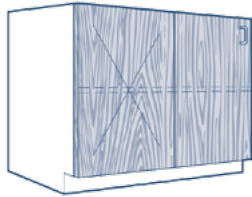
Legend:

- *1 Double pulls on 30" to 48" cabinet sizes
- *2 File drawers supplied with hanger bars and full extension slide arms to fit legal or letter size files
- *3 Full extension drawer slide arms supplied as standard on these cabinets
- *4 Back panels in these cabinets are 9" high



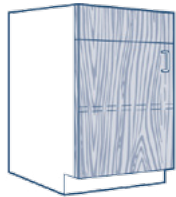
Model no.	Width	
	inches	mm
HO-ADA20-30	30	762
HO-ADA20-36	36	914
HO-ADA20-42	42	1067
HO-ADA20-48	48	1219

Corner unit



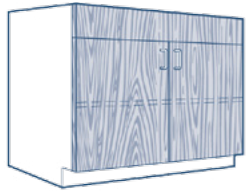
HO-ADA21-30	30	762
HO-ADA21-36	36	914
HO-ADA21-42	42	1067
HO-ADA21-48	48	1219

Corner unit



HO-ADA24-18	18	457
HO-ADA24-24	24	610

Remote control unit - 1 door

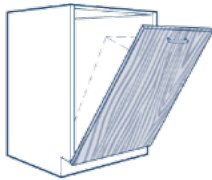


HO-ADA24-30	30	762
HO-ADA24-36	36	914
HO-ADA24-48	48	1219

Description

- Fixed upper panel for mounting of services.
- This unit is mostly used under fume hoods where services are deck mounted.

Remote control unit - 2 doors

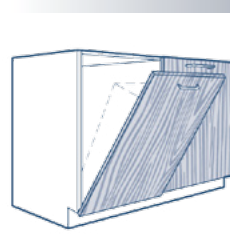


HO-ADA28-18	18	457
HO-ADA28-24	24	316

Description

- Bins are not included.
- Bins can be supplied by adding the following letters after catalog number:
 - "GB" for galvanized steel;
 - "SB" for stainless steel T.304;
 - "LP" for leak proof.

1 door bin unit

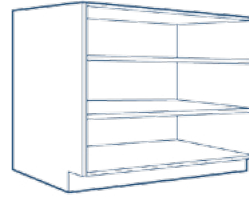


Model no.	Width	
	inches	mm
HO-ADA29-36	36	914
HO-ADA29-48	48	1219

Description

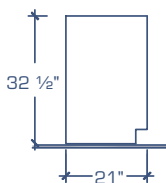
- Bins are not included.
- Bins can be supplied by adding the following letters after catalog number:
 - "GB" for galvanized steel;
 - "SB" for stainless steel T.304;
 - "LP" for leak proof.

2 door bin unit



HO-ADA35-15	15	381
HO-ADA35-18	18	457
HO-ADA35-21	21	533
HO-ADA35-24	24	610
HO-ADA35-30	30	762
HO-ADA35-36	36	914
HO-ADA35-42	42	1067
HO-ADA35-48	48	1219

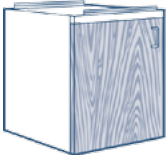
Open unit



Legend:

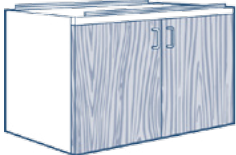
- *1 Double pulls on 30" to 48" cabinet sizes
- *2 File drawers supplied with hanger bars and full extension slide arms to fit legal or letter size files
- *3 Full extension drawer slide arms supplied as standard on these cabinets
- *4 Back panels in these cabinets are 9" high

24-3/4" High Suspended Cabinets



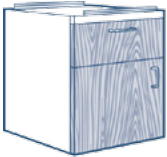
Model no.	Width	
	inches	mm
HO-OB1-15	15	381
HO-OB1-18	18	914
HO-OB1-21	21	1067
HO-OB1-24	24	1219

Suspended 1 Hinged Door Unit




HO-OB2-30	30	752
HO-OB2-36	36	914
HO-OB2-42	42	1067
HO-OB2-48	48	1219

Suspended 2 Hinged Door unit




HO-OB4-15-1	15	381
HO-OB4-18-1	18	457
HO-OB4-21-1	21	533
HO-OB4-24-1	24	610

Suspended 1 Drawer & 1 Hinged Door unit




HO-OB5-30-2	30	752
HO-OB5-36-2	36	914
HO-OB5-42-2	42	1067
HO-OB5-48-2	48	1219

Suspended 2 Drawer & 2 Hinged Door unit




HO-OB7-15-3	15	381
HO-OB7-18-3	18	457
HO-OB7-21-3	21	533
HO-OB7-24-3	24	610

Suspended 3 Drawer unit




HO-OB7-15-4	15	381
HO-OB7-18-4	18	457
HO-OB7-21-4	21	533
HO-OB7-24-4	24	610

Suspended 2 Half Drawer & 2 Drawer unit




Model no.	Width	
	inches	mm
HO-OB10-30-6	30	752
HO-OB10-36-6	36	914
HO-OB10-42-6	42	1067
HO-OB10-48-6	48	1219

Suspended 6 Drawer Unit




HO-OB10-30-8	30	752
HO-OB10-36-8	36	914
HO-OB10-42-8	42	1067
HO-OB10-48-8	48	1219

Suspended 4 Half Drawer & 4 Regular Drawer unit




HO-OB11-15-2 *	15	381
HO-OB11-18-2 *	18	457
HO-OB11-21-2 *	21	533
HO-OB11-24-2 *	24	610

Suspended 1 Drawer & 1 File Drawer unit



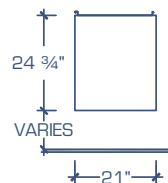
HO-OB11-15-3 *	15	381
HO-OB11-18-3 *	18	457
HO-OB11-21-3 *	21	533
HO-OB11-24-3 *	24	610

Suspended 2 Half Drawer & 1 File Drawer unit



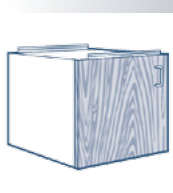
HO-OB35-15	15	381
HO-OB35-18	18	457
HO-OB35-21	21	533
HO-OB35-24	24	610
HO-OB35-30	30	752
HO-OB35-36	36	914
HO-OB35-42	42	1067
HO-OB35-48	48	1219

Suspended Open unit

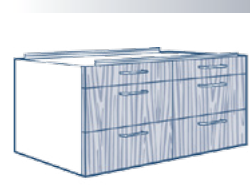


Legend:

- *1 Double pulls on 30" to 48" cabinet sizes
- *2 File drawers supplied with hanger bars and full extension slide arms to fit legal or letter size files
- *3 Full extension drawer slide arms supplied as standard on these cabinets
- *4 Back panels in these cabinets are 9" high




Model no.	Width	
	inches	mm
HO-OC1-15	15	381
HO-OC1-18	18	457
HO-OC1-21	21	533
HO-OC1-24	24	610




Model no.	Width	
	inches	mm
HO-OC10-30-6	30	762
HO-OC10-36-6	36	914
HO-OC10-42-6	42	1067
HO-OC10-48-6	48	1219

Suspended 1 Hinged Door unit

Suspended 2 Half Drawer & 4 Drawer unit




HO-OC2-30	30	762
HO-OC2-36	36	914
HO-OC2-42	42	1067
HO-OC2-48	48	1219



HO-OC11-15-2 *2	15	381
HO-OC11-18-2 *2	18	457
HO-OC11-21-2 *2	21	533
HO-OC11-24-2 *2	24	610

Suspended 2 Hinged Door unit

Suspended 1 Half Drawer + 1 File Drawer unit



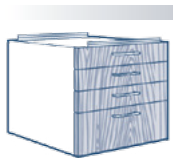
HO-OC7-15-3	15	381
HO-OC7-18-3	18	457
HO-OC7-21-3	21	533
HO-OC7-24-3	24	610




HO-OC11-30-4 *2	30	762
HO-OC11-36-4 *2	36	914
HO-OC11-42-4 *2	42	1067
HO-OC11-48-4 *2	48	1219

Suspended 1 Half Drawer & 2 Drawer unit

Suspended 2 Half Drawer + 2 File Drawer unit



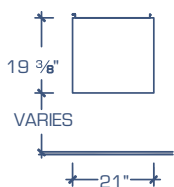
HO-OC10-15-4	15	381
HO-OC10-18-4	18	457
HO-OC10-21-4	21	533
HO-OC10-24-4	24	610



HO-OC35-15	15	381
HO-OC35-18	18	457
HO-OC35-21	21	533
HO-OC35-24	24	610
HO-OC35-30	30	762
HO-OC35-36	36	914
HO-OC35-42	42	1067
HO-OC35-48	48	1219

Suspended 3 Half Drawer & 1 Drawer unit

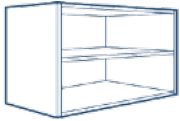
Suspended Open unit



Legend:

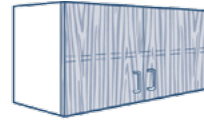
- *1 Double pulls on 30" to 48" cabinet sizes
- *2 File drawers supplied with hanger bars and full extension slide arms to fit legal or letter size files
- *3 Full extension drawer slide arms supplied as standard on these cabinets
- *4 Back panels in these cabinets are 9" high

24" High Wall Cases



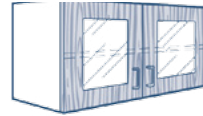
Model no.	Width	
	inches	mm
HO-40-15-14	15	381
HO-40-18-14	18	457
HO-40-21-14	21	533
HO-40-24-14	24	610
HO-40-30-14	30	762
HO-40-36-14	36	914
HO-40-42-14	42	1067
HO-40-48-14	48	1219
HO-40-15-18	15	381
HO-40-18-18	18	457
HO-40-21-18	21	533
HO-40-24-18	24	610
HO-40-30-18	30	762
HO-40-36-18	36	914
HO-40-42-18	42	1067
HO-40-48-18	48	1219

Open shelf unit



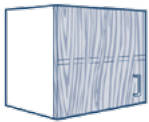
Model no.	Width	
	inches	mm
HO-43-30-14	30	762
HO-43-36-14	36	914
HO-43-42-14	42	1067
HO-43-48-14	48	1219
HO-43-30-18	30	762
HO-43-36-18	36	914
HO-43-42-18	42	1067
HO-43-48-18	48	1219

2 hinged door unit



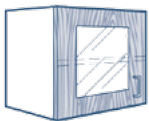
HO-44-30-14	30	762
HO-44-36-14	36	914
HO-44-42-14	42	1067
HO-44-48-14	48	1219
HO-44-30-18	30	762
HO-44-36-18	36	914
HO-44-42-18	42	1067
HO-44-48-18	48	1219

2 glazed hinged door unit



HO-41-15-14	15	381
HO-41-18-14	18	457
HO-41-21-14	21	533
HO-41-24-14	24	610
HO-41-15-18	15	381
HO-41-18-18	18	457
HO-41-21-18	21	533
HO-41-24-18	24	610

1 hinged door unit

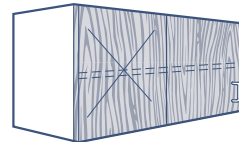


HO-42-15-14	15	381
HO-42-18-14	18	457
HO-42-21-14	21	533
HO-42-24-14	24	610
HO-42-15-18	15	381
HO-42-18-18	18	457
HO-42-21-18	21	533
HO-42-24-18	24	610

1 glazed hinged door unit

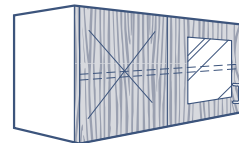
Description

- Unframed glass sliding doors to be supplied using 6 mm float glass with finger grooves
- Framed glass doors to be supplied using 3 mm float glass



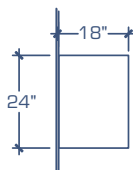
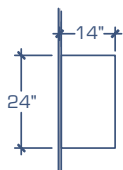
HO-10-30-14	30	762
HO-10-36-14	36	914
HO-10-42-14	42	1067
HO-10-48-14	48	1219
HO-10-30-18	30	762
HO-10-36-18	36	914
HO-10-42-18	42	1067
HO-10-48-18	48	1219

Corner unit with door



HO-20-30-14	30	762
HO-20-36-14	36	914
HO-20-42-14	42	1067
HO-20-48-14	48	1219
HO-20-30-18	30	762
HO-20-36-18	36	914
HO-20-42-18	42	1067
HO-20-48-18	48	1219

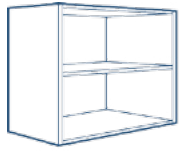
Corner unit with door



14" depth units

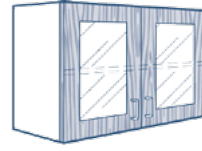
18" depth units

Reverse models are also available by adding "RV" to model number.



Open shelf unit

Model no.	Width	
	inches	mm
HO-54-15-14	15	381
HO-54-18-14	18	457
HO-54-21-14	21	533
HO-54-24-14	24	610
HO-54-30-14	30	762
HO-54-36-14	36	914
HO-54-42-14	42	1067
HO-54-48-14	48	1219
HO-54-15-18	15	381
HO-54-18-18	18	457
HO-54-21-18	21	533
HO-54-24-18	24	610
HO-54-30-18	30	762
HO-54-36-18	36	914
HO-54-42-18	42	1067
HO-54-48-18	48	1219



2 glazed hinged door unit

Model no.	Width	
	inches	mm
HO-58-30-14	30	762
HO-58-36-14	36	914
HO-58-42-14	42	1067
HO-58-48-14	48	1219
HO-58-30-18	30	762
HO-58-36-18	36	914
HO-58-42-18	42	1067
HO-58-48-18	48	1219

Description

- Unframed glass sliding doors are supplied using 5 mm float glass with finger grooves
- Framed glass doors are supplied using 3 mm float glass



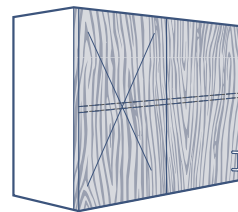
1 hinged door unit

HO-55-15-14	15	381
HO-55-18-14	18	457
HO-55-21-14	21	533
HO-55-24-14	24	610
HO-55-15-18	15	381
HO-55-18-18	18	457
HO-55-21-18	21	533
HO-55-24-18	24	610



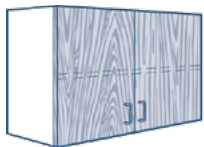
1 glazed hinged door unit

HO-56-15-14	15	381
HO-56-18-14	18	457
HO-56-21-14	21	533
HO-56-24-14	24	610
HO-56-15-18	15	381
HO-56-18-18	18	457
HO-56-21-18	21	533
HO-56-24-18	24	610



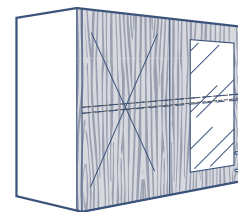
Corner unit with door

HO-11-30-14	30	762
HO-11-36-14	36	914
HO-11-42-14	42	1067
HO-11-48-14	48	1219
HO-11-30-18	30	762
HO-11-36-18	36	914
HO-11-42-18	42	1067
HO-11-48-18	48	1219



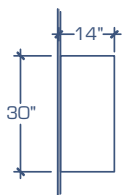
2 hinged door unit

HO-57-30-14	30	762
HO-57-36-14	36	914
HO-57-42-14	42	1067
HO-57-48-14	48	1219
HO-57-30-18	30	762
HO-57-36-18	36	914
HO-57-42-18	42	1067
HO-57-48-18	48	1219

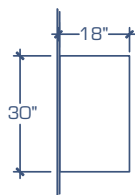


Corner unit with glazed door

HO-21-30-14	30	762
HO-21-36-14	36	914
HO-21-42-14	42	1067
HO-21-48-14	48	1219
HO-21-30-18	30	762
HO-21-36-18	36	914
HO-21-42-18	42	1067
HO-21-48-18	48	1219



14" depth units



18" depth units

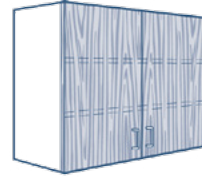
Reverse models are also available by adding "RV" to model number.

36" High Wall Cases



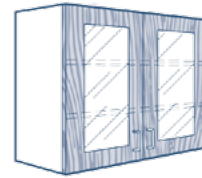
Open shelf unit

Model no.	Width	
	inches	mm
HO-63-15-14	15	381
HO-63-18-14	18	457
HO-63-21-14	21	533
HO-63-24-14	24	610
HO-63-30-14	30	762
HO-63-36-14	36	914
HO-63-42-14	42	1067
HO-63-48-14	48	1219
HO-63-15-18	15	381
HO-63-18-18	18	457
HO-63-21-18	21	533
HO-63-24-18	24	610
HO-63-30-18	30	762
HO-63-36-18	36	914
HO-63-42-18	42	1067
HO-63-48-18	48	1219



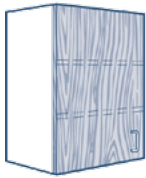
2 solid hinged door unit

Model no.	Width	
	inches	mm
HO-66-30-14	30	762
HO-66-36-14	36	914
HO-66-42-14	42	1067
HO-66-48-14	48	1219
HO-66-30-18	30	762
HO-66-36-18	36	914
HO-66-42-18	42	1067
HO-66-48-18	48	1219



2 glazed hinged door unit

HO-67-30-14	30	762
HO-67-36-14	36	914
HO-67-42-14	42	1067
HO-67-48-14	48	1219
HO-67-30-18	30	762
HO-67-36-18	36	914
HO-67-42-18	42	1067
HO-67-48-18	48	1219



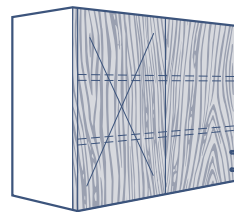
1 hinged door unit

HO-64-15-14	15	381
HO-64-18-14	18	457
HO-64-21-14	21	533
HO-64-24-14	24	610
HO-64-15-18	15	381
HO-64-18-18	18	457
HO-64-21-18	21	533
HO-64-24-18	24	610



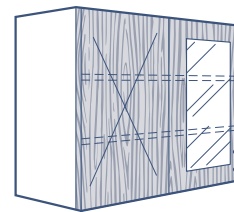
1 glazed hinged door unit

HO-65-15-14	15	381
HO-65-18-14	18	457
HO-65-21-14	21	533
HO-65-24-14	24	610
HO-65-15-18	15	381
HO-65-18-18	18	457
HO-65-21-18	21	533
HO-65-24-18	24	610



Corner unit with door

HO-12-30-14	30	762
HO-12-36-14	36	914
HO-12-42-14	42	1067
HO-12-48-14	48	1219
HO-12-30-18	30	762
HO-12-36-18	36	914
HO-12-42-18	42	1067
HO-12-48-18	48	1219

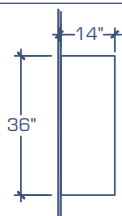


Corner unit with door

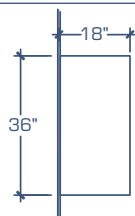
HO-22-30-14	30	762
HO-22-36-14	36	914
HO-22-42-14	42	1067
HO-22-48-14	48	1219
HO-22-30-18	30	762
HO-22-36-18	36	914
HO-22-42-18	42	1067
HO-22-48-18	48	1219

Description

- Unframed glass sliding doors are supplied using 5 mm float glass with finger grooves
- Framed glass doors are supplied using 3 mm float glass



14" depth units



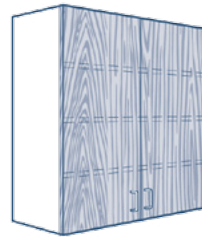
18" depth units

Reverse models are also available by adding "RV" to model number.



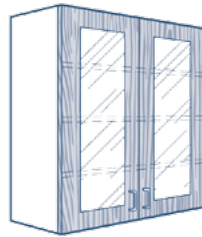
Open shelf unit

Model no.	Width	
	inches	mm
HO-72-15-14	15	381
HO-72-18-14	18	457
HO-72-21-14	21	533
HO-72-24-14	24	610
HO-72-30-14	30	762
HO-72-36-14	36	914
HO-72-42-14	42	1067
HO-72-48-14	48	1219
HO-72-15-18	15	381
HO-72-18-18	18	457
HO-72-21-18	21	533
HO-72-24-18	24	610
HO-72-30-18	30	762
HO-72-36-18	36	914
HO-72-42-18	42	1067
HO-72-48-18	48	1219



2 hinged door unit

Model no.	Width	
	inches	mm
HO-75-30-14	30	762
HO-75-36-14	36	914
HO-75-42-14	42	1067
HO-75-48-14	48	1219
HO-75-30-18	30	762
HO-75-36-18	36	914
HO-75-42-18	42	1067
HO-75-48-18	48	1219



2 glazed hinged door unit

HO-76-30-14	30	762
HO-76-36-14	36	914
HO-76-42-14	42	1067
HO-76-48-14	48	1219
HO-76-30-18	30	762
HO-76-36-18	36	914
HO-76-42-18	42	1067
HO-76-48-18	48	1219

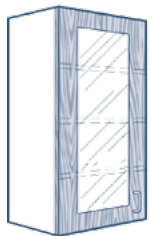
Description

- Unframed glass sliding doors are supplied using 5 mm float glass with finger grooves
- Framed glass doors are supplied using 3 mm float glass



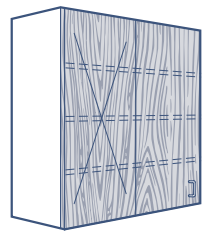
1 hinged door unit

HO-73-15-14	15	381
HO-73-18-14	18	457
HO-73-21-14	21	533
HO-73-24-14	24	610
HO-73-15-18	15	381
HO-73-18-18	18	457
HO-73-21-18	21	533
HO-73-24-18	24	610



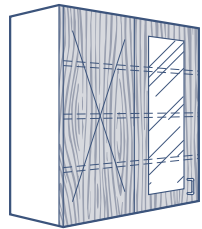
1 glazed hinged door unit

HO-74-15-14	15	381
HO-74-18-14	18	457
HO-74-21-14	21	533
HO-74-24-14	24	610
HO-74-15-18	15	381
HO-74-18-18	18	457
HO-74-21-18	21	533
HO-74-24-18	24	610



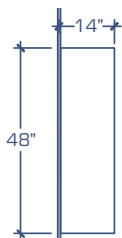
Corner unit - with door 48"

FO-13-30-14	30	762
FO-13-36-14	36	914
FO-13-42-14	42	1067
FO-13-48-14	48	1219
FO-13-30-18	30	762
FO-13-36-18	36	914
FO-13-42-18	42	1067
FO-13-48-18	48	1219

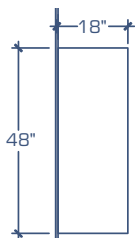


Corner unit - with glazed door 48"

FO-23-30-14	30	762
FO-23-36-14	36	914
FO-23-42-14	42	1067
FO-23-48-14	48	1219
FO-23-30-18	30	762
FO-23-36-18	36	914
FO-23-42-18	42	1067
FO-23-48-18	48	1219



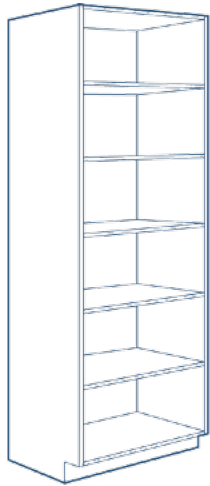
14" depth units



18" depth units

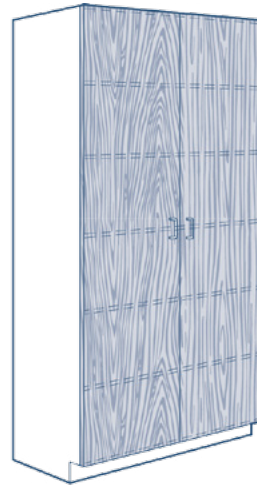
Reverse models are also available by adding "RV" to model number.

84" High Tall cases



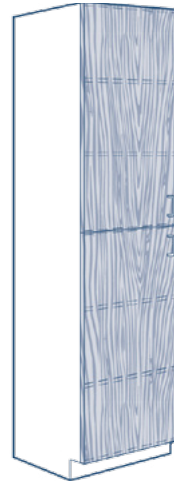
Open shelf tall cab

Model no.	Width	
	inches	mm
HO-85-15-14	15	381
HO-85-18-14	18	457
HO-85-21-14	21	533
HO-85-24-14	24	610
HO-85-30-14	30	762
HO-85-36-14	36	914
HO-85-42-14	42	1067
HO-85-48-14	48	1219
HO-85-15-18	15	381
HO-85-18-18	18	457
HO-85-21-18	21	533
HO-85-24-18	24	610
HO-85-30-18	30	762
HO-85-36-18	36	914
HO-85-42-18	42	1067
HO-85-48-18	48	1219
HO-85-15-22	15	381
HO-85-18-22	18	457
HO-85-21-22	21	533
HO-85-24-22	24	610
HO-85-30-22	30	762
HO-85-36-22	36	914
HO-85-42-22	42	1067
HO-85-48-22	48	1219



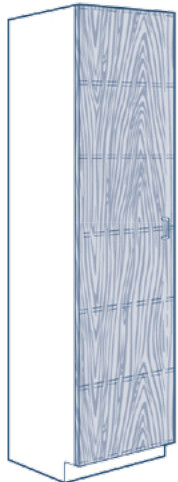
Model no.	Width	
	inches	mm
HO-86-30-14	30	762
HO-86-36-14	36	914
HO-86-42-14	42	1067
HO-86-48-14	48	1219
HO-86-30-18	30	762
HO-86-36-18	36	914
HO-86-42-18	42	1067
HO-86-48-18	48	1219
HO-86-30-22	30	762
HO-86-36-22	36	914
HO-86-42-22	42	1067
HO-86-48-22	48	1219

2 hinged door tall cab



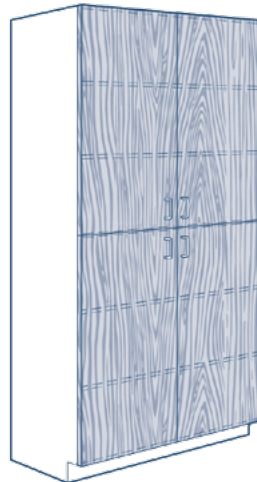
HO-86A-15-14	15	381
HO-86A-18-14	18	457
HO-86A-21-14	21	533
HO-86A-24-14	24	610
HO-86A-15-18	15	381
HO-86A-18-18	18	457
HO-86A-21-18	21	533
HO-86A-24-18	24	610
HO-86A-15-22	15	381
HO-86A-18-22	18	457
HO-86A-21-22	21	533
HO-86A-24-22	24	610

2 hinged door tall cab



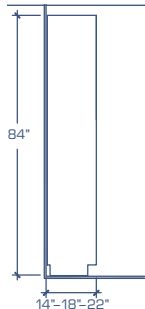
HO-86-15-14	15	381
HO-86-18-14	18	457
HO-86-21-14	21	533
HO-86-24-14	24	610
HO-86-15-18	15	381
HO-86-18-18	18	457
HO-86-21-18	21	533
HO-86-24-18	24	610
HO-86-15-22	15	381
HO-86-18-22	18	457
HO-86-21-22	21	533
HO-86-24-22	24	610

1 hinged door tall cab

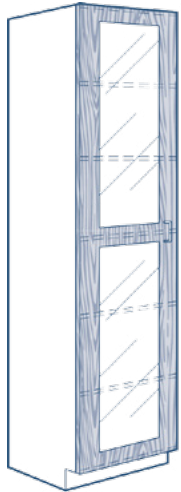


HO-86A-30-14	30	762
HO-86A-36-14	36	914
HO-86A-42-14	42	1067
HO-86A-48-14	48	1219
HO-86A-30-18	30	762
HO-86A-36-18	36	914
HO-86A-42-18	42	1067
HO-86A-48-18	48	1219
HO-86A-30-22	30	762
HO-86A-36-22	36	914
HO-86A-42-22	42	1067
HO-86A-48-22	48	1219

4 hinged door tall cab

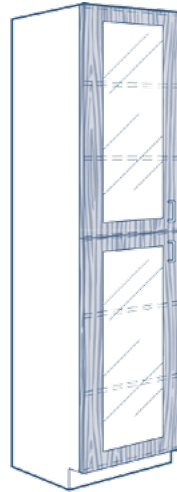


Tall cabinet available depths of 14", 18" and 22"



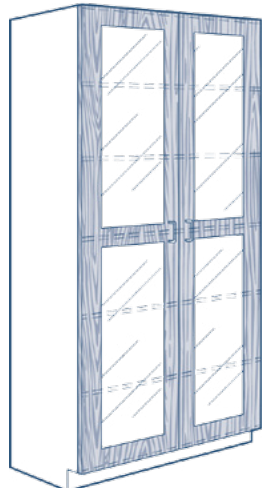
Model no.	Width	
	inches	mm
HO-87-15-14	15	381
HO-87-18-14	18	457
HO-87-21-14	21	533
HO-87-24-14	24	610
HO-87-15-18	15	381
HO-87-18-18	18	457
HO-87-21-18	21	533
HO-87-24-18	24	610
HO-87-15-22	15	381
HO-87-18-22	18	457
HO-87-21-22	21	533
HO-87-24-22	24	610

1 glazed hinged door tall cab



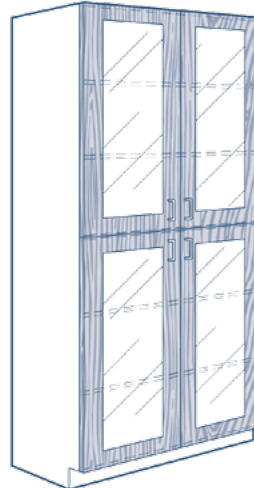
Model no.	Width	
	inches	mm
HO-87A-15-14	15	381
HO-87A-18-14	18	457
HO-87A-21-14	21	533
HO-87A-24-14	24	610
HO-87A-15-18	15	381
HO-87A-18-18	18	457
HO-87A-21-18	21	533
HO-87A-24-18	24	610
HO-87A-15-22	15	381
HO-87A-18-22	18	457
HO-87A-21-22	21	533
HO-87A-24-22	24	610

2 glazed hinged door tall cab



HO-87-30-14	30	762
HO-87-36-14	36	914
HO-87-42-14	42	1067
HO-87-48-14	48	1219
HO-87-30-18	30	762
HO-87-36-18	36	914
HO-87-42-18	42	1067
HO-87-48-18	48	1219
HO-87-30-22	30	762
HO-87-36-22	36	914
HO-87-42-22	42	1067
HO-87-48-22	48	1219

2 glazed hinged door tall cab

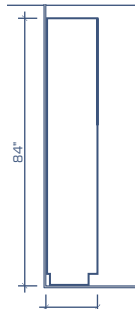


HO-87A-30-14	30	762
HO-87A-36-14	36	914
HO-87A-42-14	42	1067
HO-87A-48-14	48	1219
HO-87A-30-18	30	762
HO-87A-36-18	36	914
HO-87A-42-18	42	1067
HO-87A-48-18	48	1219
HO-87A-30-22	30	762
HO-87A-36-22	36	914
HO-87A-42-22	42	1067
HO-87A-48-22	48	1219

4 glazed hinged door tall cab

Description

- Framed glass doors to be supplied using 3 mm float glass



Tall cabinet available depths of 14", 18" and 22"



1 CABINET PULLS

Standard — Brushed nickel wire pull 4" c/c

WP Stainless steel wire pull 4" c/c

2 DRAWER SLIDE ARMS

Standard — 75% opening self closing slide arms on all regular drawers — SEFA 8M — 150 lbs

Standard — 100% full extension opening on file drawers — SEFA 8M — 100 lbs

Standard — 100% full extension opening on all drawers larger than 36" — SEFA 8M — 100 lbs

TZ 100% full extension opening on all project drawers — SEFA 8M — 100 lbs

TY 100% full extension opening with self closing option on all project drawers — SEFA 8M — 100 lbs

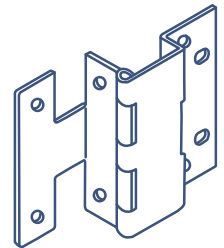
TX 100% full extension opening on all project drawers — SEFA 8M — 200 lbs

3 CABINET HINGES

Standard — knuckles nickel plated finish

HH 5-knuckles stainless steel finish

MH Polyamide mounted nickel plated steel MB-20



4 LOCKS

Standard — None

KA 8-disc chrome plated with removable core on all doors and all drawers

KT 8-disc chrome plated with removable core on all drawers

KP 8-disc chrome plated with removable core on all doors and drawers

K1 8-disc chrome plated with removable core on top drawers only

KF 8-disc chrome plated with removable core on file drawers only

KF 8-disc chrome plated with removable core on file drawers only

KC Chrome plated padlock bracket on all doors and all drawers

XI Interlocking system that permits only one drawer opening at the time (with full extension arms only) — standard on mobile cabinets

TP Theft security panels between drawers

L1 All locks different with a project master key

L2 All locks the same per cabinet with a project master key

5 DOOR CATCHES

Standard — Spring loaded roller door catch

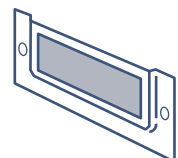


6 CARD HOLDERS

Standard — None

CH Aluminum 4" x 2" card holder on all drawers

CD Aluminum 4" x 2" card holder on all doors



7 CABINET SHELF

Standard — One (1) full depth shelf, adjustable on ½" increment

- T1 Additional shelf per cabinet
- P1 Pull out shelf for cabinets 15", 18", 21" or 24" only
- PR Pull out shelf on right cabinet side
- PL Pull out shelf on left cabinet side
- S2 Split shelves (2 pieces), adjustable on ½" increment
- FS Cabinet full extension shelf supplied with full extension slide arms – 200 lbs

8 FINISHED PANELS

Standard — Removable access panel on cupboard cabinets only (open back on drawer cab)

- BP Removable access panel on drawer units
- FO Painted steel flat finished back welded to cabinet
- FT Painted steel flat finished top panel welded to cabinet

9 CABINET BASE OPTIONS

Standard — 3" x 4" high integral front toe kick with four 3/8"x 2 ½" leveler glides

- PN Cabinet levelers supplied with grey rubber cap
- SS Four swivel casters 4" height, rubber, with brakes on two front casters – 275 lbs
- WB Cabinet supplied with no toe kick (4" shorter)
- RT Cabinet supplied with a right toe kick 3" x 4" high – not available on tall cabinets
- LT Cabinet supplied with a left toe kick 3" x 4" high – not available on tall cabinets
- VT Cabinet supplied with a venting grill on the front toe kick

10 VARIOUS OTHER CABINET OPTIONS

- RV Reverse door/drawer arrangement
- SK Sink support consisting on 2 horizontal struts with 4 rod hangers
- LG 6mm Laminated glass in lieu of standard 3mm float glass
- TG 6mm Tempered glass in lieu of standard 3mm float glass
- SB Stainless steel bin insert into bin cabinets
- GB Galvanized bin insert into bin cabinets
- LP Leak proof bin insert into bin cabinets
- WC Grill(s) incorporated into cabinet door(s)
- SS4 Same cabinet but supplied in stainless steel T.304
- SS6 Same cabinet but supplied in stainless steel T.316
- AC Self closing doors(s) option to flammable cabinets



BEDCOLAB LTD

**2305, Francis-Hugues Avenue
Laval, Quebec, Canada H7S 1N5**

Phone: 514.384.2820 / 1.800.461.6414

Fax: 514.384.9210

E-mail: information@bedcolab.com

Web Site: www.bedcolab.com



Authorized dealer: